

## Product datasheet for **TA308763**

### SOCS4 Rabbit Polyclonal Antibody

#### Product data:

Product Type:	Primary Antibodies
Applications:	IF, WB
Recommended Dilution:	ICC/IF:1:100-1:1000; WB:1:500-1:3000
Reactivity:	Human (Predicted: Pig, Chicken, Bovine, Rhesus Monkey)
Host:	Rabbit
Isotype:	IgG
Clonality:	Polyclonal
Immunogen:	Synthetic peptide corresponding to a region within amino acids 376 and 440 of SOCS4 (Uniprot ID#Q8WXH5)
Formulation:	1XPBS, 40% Glycerol (pH7). 0.01% Thimerosal was added as a preservative.
Concentration:	lot specific
Purification:	Purified by antigen-affinity chromatography.
Conjugation:	Unconjugated
Storage:	Store at -20°C as received.
Stability:	Stable for 12 months from date of receipt.
Predicted Protein Size:	51 kDa
Gene Name:	suppressor of cytokine signaling 4
Database Link:	<a href="#">NP_955453</a> <a href="#">Entrez Gene 122809 Human Q8WXH5</a>
Background:	The protein encoded by this gene contains a SH2 domain and a SOCS BOX domain. The protein thus belongs to the suppressor of cytokine signaling (SOCS), also known as STAT-induced STAT inhibitor (SSI), protein family. SOCS family members are known to be cytokine-inducible negative regulators of cytokine signaling. Two alternatively spliced transcript variants encoding the same protein have been found for this gene. [provided by RefSeq]
Synonyms:	SOCS7



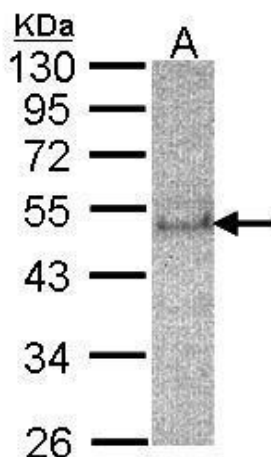
[View online »](#)

**Note:** Seq homology of immunogen across species: Pig (100%), Chicken (93%), Rhesus Monkey (100%), Bovine (100%)

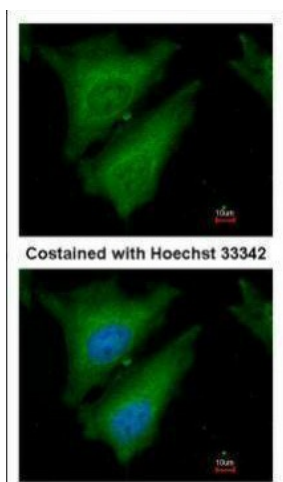
**Protein Families:** Druggable Genome

**Protein Pathways:** Insulin signaling pathway, Jak-STAT signaling pathway, Type II diabetes mellitus

**Product images:**



Sample (30 ug of whole cell lysate). A:HeLa S3. 12% SDS PAGE. TA308763 diluted at 1:200



Immunofluorescence analysis of paraformaldehyde-fixed HeLa, using SOCS4 (TA308763) antibody at 1:200 dilution.