

## Product datasheet for **TA308762**

### SOCS5 Rabbit Polyclonal Antibody

#### Product data:

Product Type:	Primary Antibodies
Applications:	IHC, WB
Recommended Dilution:	IHC:1:100-1:1000; WB:1:500-1:3000
Reactivity:	Human (Predicted: Rat, Pig, Chicken, Bovine, Rhesus Monkey)
Host:	Rabbit
Isotype:	IgG
Clonality:	Polyclonal
Immunogen:	Synthetic peptide contain a sequence corresponding to a region within amino acids 1 and 42 of SOCS5
Formulation:	1XPBS, 40% Glycerol (pH7). 0.01% Thimerosal was added as a preservative.
Concentration:	lot specific
Purification:	Purified by antigen-affinity chromatography.
Conjugation:	Unconjugated
Storage:	Store at -20°C as received.
Stability:	Stable for 12 months from date of receipt.
Predicted Protein Size:	61 kDa
Gene Name:	suppressor of cytokine signaling 5
Database Link:	<a href="#">NP_659198</a> <a href="#">Entrez Gene 500616 Rat</a> <a href="#">Entrez Gene 9655 Human</a> <a href="#">O75159</a>
Background:	The protein encoded by this gene contains a SH2 domain and a SOCS BOX domain. The protein thus belongs to the suppressor of cytokine signaling (SOCS) family, also known as STAT-induced STAT inhibitor (SSI) protein family. SOCS family members are known to be cytokine-inducible negative regulators of cytokine signaling. The specific function of this protein has not yet been determined. Two alternatively spliced transcript variants encoding an identical protein have been reported. [provided by RefSeq]
Synonyms:	CIS6; Cish5; CISH6; SOCS-5



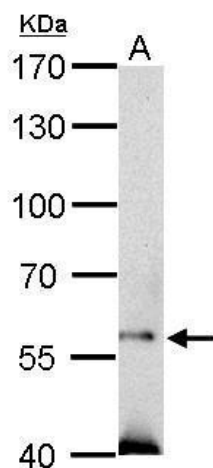
[View online »](#)

**Note:** Seq homology of immunogen across species: Rat (100%), Pig (100%), Chicken (100%), Rhesus Monkey (100%), Bovine (100%)

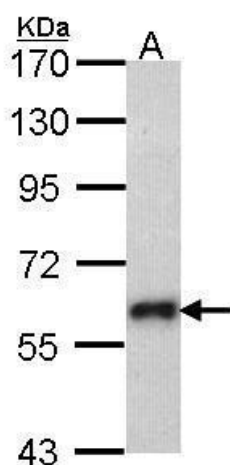
**Protein Families:** Druggable Genome

**Protein Pathways:** Jak-STAT signaling pathway

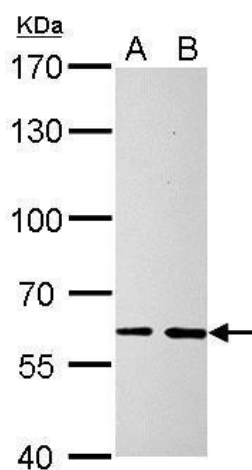
**Product images:**



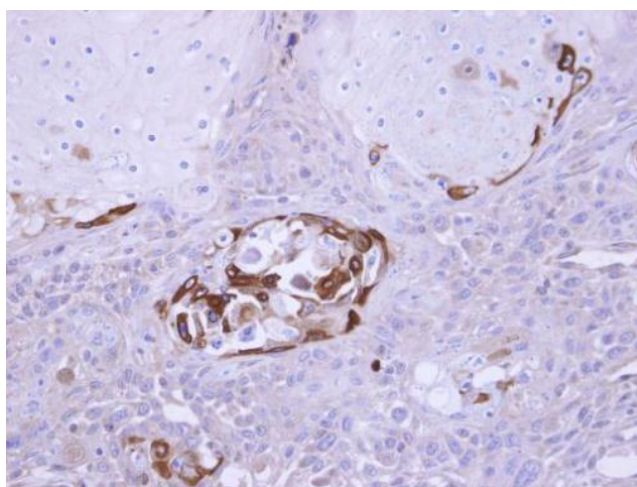
SOCS5 antibody detects SOCS5 protein by Western blot analysis. A. 50 ug mouse testis lysate/extract. 7.5 % SDS-PAGE. SOCS5 antibody (TA308762) dilution: 1:500



Sample (30 ug of whole cell lysate). A: Molt-4. 7.5% SDS PAGE. SOCS5 antibody. TA308762 diluted at 1:1000.



SOCS5 antibody detects SOCS5 protein by Western blot analysis. A. 30 µg NT2D1 whole cell lysate/extract. B. 30 µg PC-3 whole cell lysate/extract. 7.5 % SDS-PAGE. SOCS5 antibody (TA308762) dilution: 1:500



Immunohistochemical analysis of paraffin-embedded Ca922 xenograft, using SOCS5 (TA308762) antibody at 1:100 dilution.