

Product datasheet for **TA308759**

UBE2G2 Rabbit Polyclonal Antibody

Product data:

Product Type:	Primary Antibodies
Applications:	IF, WB
Recommended Dilution:	ICC/IF:1:100-1:1000; WB:1:500-1:3000
Reactivity:	Human (Predicted: Rat, Rhesus Monkey, Mouse)
Host:	Rabbit
Isotype:	IgG
Clonality:	Polyclonal
Immunogen:	Recombinant fragment corresponding to a region within amino acids 1 and 165 of UBE2G2 (Uniprot ID#P60604)
Formulation:	0.1M Tris, 0.1M Glycine, 10% Glycerol (pH7). 0.01% Thimerosal was added as a preservative.
Concentration:	lot specific
Purification:	Purified by antigen-affinity chromatography.
Conjugation:	Unconjugated
Storage:	Store at -20°C as received.
Stability:	Stable for 12 months from date of receipt.
Predicted Protein Size:	16 kDa
Gene Name:	ubiquitin conjugating enzyme E2 G2
Database Link:	NP_003334 Entrez Gene 22213 Mouse Entrez Gene 294331 Rat Entrez Gene 7327 Human P60604

Background: The modification of proteins with ubiquitin is an important cellular mechanism for targeting abnormal or short-lived proteins for degradation. Ubiquitination involves at least three classes of enzymes: ubiquitin-activating enzymes, or E1s, ubiquitin-conjugating enzymes, or E2s, and ubiquitin-protein ligases, or E3s. This gene encodes a member of the E2 ubiquitin-conjugating enzyme family. The encoded protein shares 100% sequence identity with the mouse counterpart. This gene is ubiquitously expressed, with high expression seen in adult muscle. Two alternatively spliced transcript variants encoding distinct isoforms have been found for this gene. [provided by RefSeq]



[View online »](#)

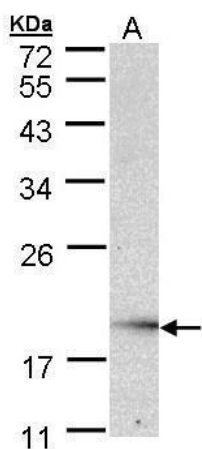
Synonyms: UBC7

Note: Seq homology of immunogen across species: Mouse (100%), Rat (100%), Rhesus Monkey (100%)

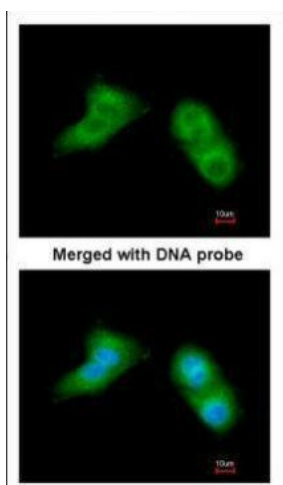
Protein Families: Druggable Genome

Protein Pathways: Parkinson's disease, Ubiquitin mediated proteolysis

Product images:



Sample (30 ug of whole cell lysate). A: Raji. 12% SDS PAGE. TA308759 diluted at 1:1000



Immunofluorescence analysis of paraformaldehyde-fixed A549, using UBE2G2 (TA308759) antibody at 1:200 dilution.