

Product datasheet for **TA308758**

UBE2L3 Rabbit Polyclonal Antibody

Product data:

Product Type:	Primary Antibodies
Applications:	IF, IHC, IP, WB
Recommended Dilution:	ICC/IF:1:100-1:1000; IHC:1:100-1:1000; WB:1:500-1:3000
Reactivity:	Human (Predicted: Xenopus, Pig, Chicken, Bovine, Rhesus Monkey, X. tropicalis)
Host:	Rabbit
Isotype:	IgG
Clonality:	Polyclonal
Immunogen:	Synthetic peptide corresponding to a region within amino acids 92 and 154 of UBE2L3 (Uniprot ID#P68036)
Formulation:	1XPBS, 40% Glycerol (pH7). 0.01% Thimerosal was added as a preservative.
Concentration:	lot specific
Purification:	Purified by antigen-affinity chromatography.
Conjugation:	Unconjugated
Storage:	Store at -20°C as received.
Stability:	Stable for 12 months from date of receipt.
Predicted Protein Size:	18 kDa
Gene Name:	ubiquitin conjugating enzyme E2 L3
Database Link:	NP_937800 Entrez Gene 7332 Human P68036

Background: The modification of proteins with ubiquitin is an important cellular mechanism for targeting abnormal or short-lived proteins for degradation. Ubiquitination involves at least three classes of enzymes: ubiquitin-activating enzymes (E1s), ubiquitin-conjugating enzymes (E2s) and ubiquitin-protein ligases (E3s). This gene encodes a member of the E2 ubiquitin-conjugating enzyme family. This enzyme is demonstrated to participate in the ubiquitination of p53, c-Fos, and the NF- κ B precursor p105 in vitro. Two alternatively spliced transcript variants encoding distinct isoforms have been found for this gene. [provided by RefSeq]



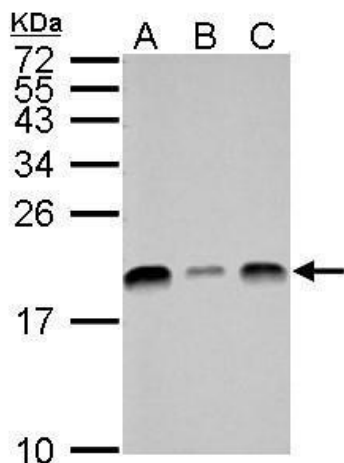
[View online »](#)

Synonyms: E2-F1; L-UBC; UBCH7; UbcM4; ubiquitin-conjugating enzyme E2L 3; ubiquitin-conjugating enzyme UBCH7; ubiquitin-protein ligase; ubiquitin carrier protein

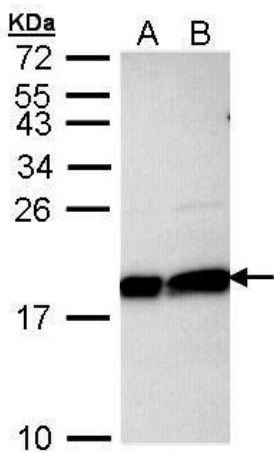
Note: Seq homology of immunogen across species: *Xenopus laevis* (100%), *Xenopus Tropicalis* (100%), Pig (100%), Chicken (100%), Rhesus Monkey (100%), Bovine (100%)

Protein Pathways: Parkinson's disease, Ubiquitin mediated proteolysis

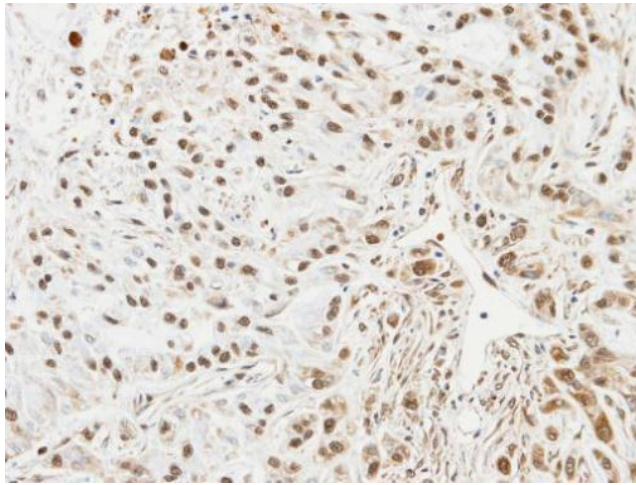
Product images:



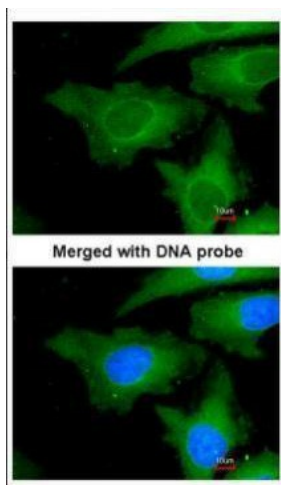
UBE2L3 antibody detects UBE2L3 protein by Western blot analysis. A. 30 ug Neuro2A whole cell lysate/extract. B. 30 ug GL261 whole cell lysate/extract. C. 30 ug C8D30 whole cell lysate/extract. 15 % SDS-PAGE. UBE2L3 antibody (TA308758) dilution: 1:1000



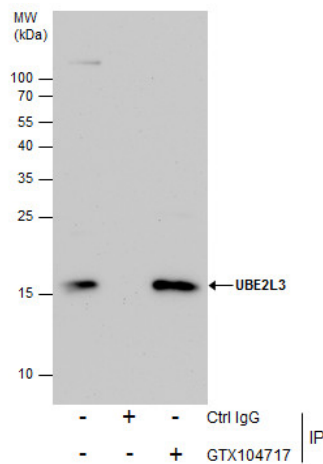
Sample (30 ug of whole cell lysate). A: HeLa. B: Hep G2. 12% SDS PAGE. TA308758 diluted at 1:1000.



Immunohistochemical analysis of paraffin-embedded A549 xenograft, using UBE2L3 (TA308758) antibody at 1:100 dilution.



Immunofluorescence analysis of paraformaldehyde-fixed HeLa, using UBE2L3 (TA308758) antibody at 1:200 dilution.



Immunoprecipitation of UBE2L3 protein from HeLa whole cell extracts using 5 ug of UBE2L3 antibody (TA308758). Western blot analysis was performed using UBE2L3 antibody (TA308758). An anti-rabbit IgG was used as a secondary reagent.