

## Product datasheet for **TA308755**

### **RAD18 Rabbit Polyclonal Antibody**

#### **Product data:**

<b>Product Type:</b>	Primary Antibodies
<b>Applications:</b>	IF, IHC, WB
<b>Recommended Dilution:</b>	ICC/IF:1:100-1:1000; IHC:1:100-1:1000; WB:1:500-1:3000
<b>Reactivity:</b>	Human (Predicted: Bovine)
<b>Host:</b>	Rabbit
<b>Isotype:</b>	IgG
<b>Clonality:</b>	Polyclonal
<b>Immunogen:</b>	Recombinant fragment corresponding to a region within amino acids 1 and 259 of RAD18 (Uniprot ID#Q9NS91)
<b>Formulation:</b>	0.1M Tris, 0.1M Glycine, 20% Glycerol (pH7). 0.01% Thimerosal was added as a preservative.
<b>Concentration:</b>	lot specific
<b>Purification:</b>	Purified by antigen-affinity chromatography.
<b>Conjugation:</b>	Unconjugated
<b>Storage:</b>	Store at -20°C as received.
<b>Stability:</b>	Stable for 12 months from date of receipt.
<b>Predicted Protein Size:</b>	56 kDa
<b>Gene Name:</b>	RAD18, E3 ubiquitin protein ligase
<b>Database Link:</b>	<a href="#">NP_064550</a> <a href="#">Entrez Gene 56852 Human Q9NS91</a>
<b>Background:</b>	The protein encoded by this gene is highly similar to <i>S. cerevisiae</i> DNA damage repair protein Rad18. Yeast Rad18 functions through its interaction with Rad6, which is an ubiquitin-conjugating enzyme required for post-replication repair of damaged DNA. Similar to its yeast counterpart, this protein is able to interact with the human homolog of yeast Rad6 protein through a conserved ring-finger motif. Mutation of this motif results in defective replication of UV-damaged DNA and hypersensitivity to multiple mutagens. [provided by RefSeq]
<b>Synonyms:</b>	RNF73

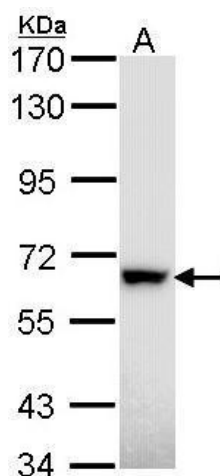


[View online »](#)

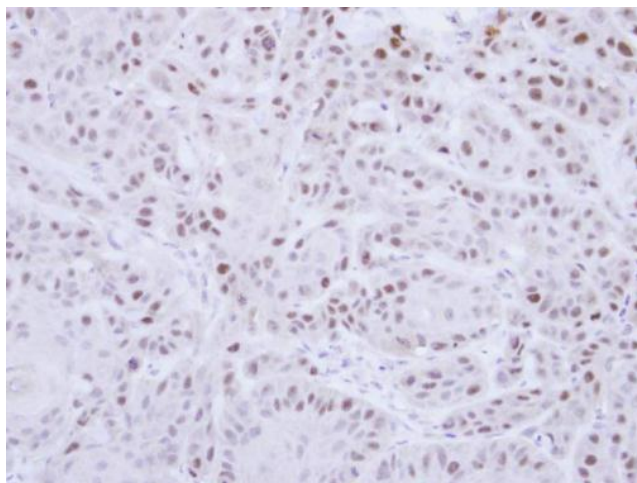
**Note:** Seq homology of immunogen across species: Bovine (80%)

**Protein Families:** Druggable Genome

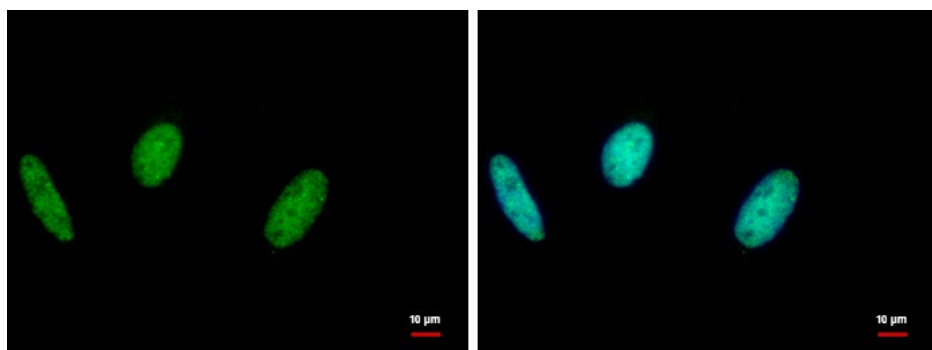
**Product images:**



Sample (30 ug of whole cell lysate). A: Hep G2. 7.5% SDS PAGE. TA308755 diluted at 1:1000.



Immunohistochemical analysis of paraffin-embedded Cal27 Xenograft, using RAD18 (TA308755) antibody at 1:100 dilution.



RAD18 antibody [N1C1] detects RAD18 protein at nucleus by immunofluorescent analysis. Sample: HeLa cells were fixed in 4% paraformaldehyde at RT for 15 min. Green: RAD18 protein stained by RAD18 antibody [N1C1] (TA308755) diluted at 1:500. Blue: Hoechst 3