

## Product datasheet for **TA308754**

### XPB (ERCC3) Rabbit Polyclonal Antibody

#### Product data:

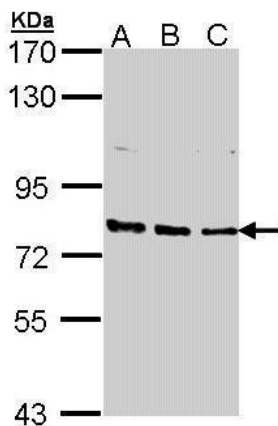
Product Type:	Primary Antibodies
Applications:	IF, WB
Recommended Dilution:	ICC/IF:1:100-1:1000; WB:1:500-1:3000
Reactivity:	Human (Predicted: Bovine, Rhesus Monkey)
Host:	Rabbit
Isotype:	IgG
Clonality:	Polyclonal
Immunogen:	Recombinant fragment corresponding to a region within amino acids 521 and 742 of XPB (Uniprot ID#P19447)
Formulation:	0.1M Tris, 0.1M Glycine, 10% Glycerol (pH7). 0.01% Thimerosal was added as a preservative.
Concentration:	lot specific
Purification:	Purified by antigen-affinity chromatography.
Conjugation:	Unconjugated
Storage:	Store at -20°C as received.
Stability:	Stable for 12 months from date of receipt.
Predicted Protein Size:	89 kDa
Gene Name:	ERCC excision repair 3, TFIIH core complex helicase subunit
Database Link:	<a href="#">NP_000113</a> <a href="#">Entrez Gene 2071 Human P19447</a>
Background:	ERCC3 is an ATP-dependent DNA helicase that functions in nucleotide excision repair and complements xeroderma pigmentosum group B mutations. It also is the 89 kDa subunit of basal transcription factor 2 (TFIIH) and thus functions in class II transcription. [provided by RefSeq]
Synonyms:	BTF2; GTF2H; RAD25; TFIIH; TTD2; XPB
Note:	Seq homology of immunogen across species: Rhesus Monkey (100%), Bovine (100%)
Protein Families:	Druggable Genome, Transcription Factors



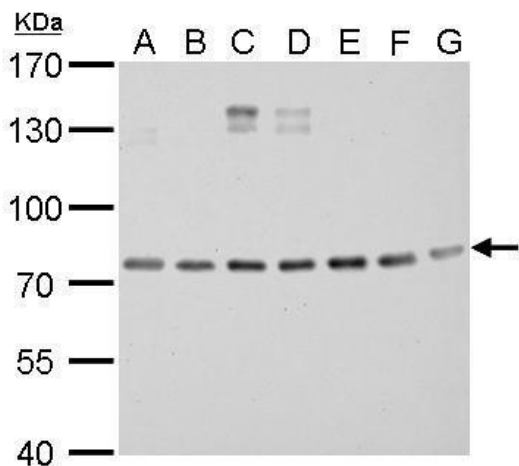
[View online »](#)

Protein Pathways: Nucleotide excision repair

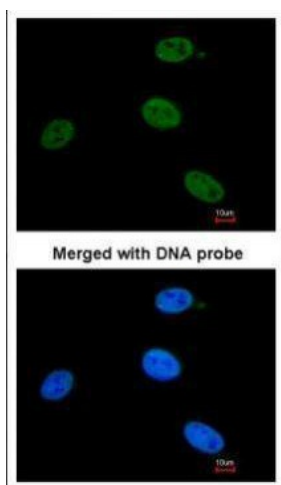
**Product images:**



Sample (30 ug of whole cell lysate). A: 293T. B: A431. C: H1299. 7.5% SDS PAGE. TA308754 diluted at 1:1000.



XPB antibody detects XPB protein by Western blot analysis. A. 30 ug Neuro2A whole cell lysate/extract. B. 30 ug GL261 whole cell lysate/extract. C. 30 ug C8D30 whole cell lysate/extract. D. 30 ug NIH-3T3 whole cell lysate/extract. E. 30 ug BCL-1 whole cel



Immunofluorescence analysis of paraformaldehyde-fixed HeLa, using XPB (TA308754) antibody at 1:200 dilution.