

Product datasheet for **TA308753**

DNA Polymerase gamma (POLG) Rabbit Polyclonal Antibody

Product data:

Product Type:	Primary Antibodies
Applications:	IF, IHC, WB
Recommended Dilution:	ICC/IF:1:100-1:1000; IHC:1:100-1:1000; WB:1:500-1:3000
Reactivity:	Human
Host:	Rabbit
Isotype:	IgG
Clonality:	Polyclonal
Immunogen:	Recombinant fragment corresponding to a region within amino acids 779 and 1231 of DNA polymerase gamma (Uniprot ID#P54098)
Formulation:	1XPBS, 20% Glycerol (pH7). 0.025% ProClin 300 was added as a preservative.
Concentration:	lot specific
Purification:	Purified by antigen-affinity chromatography.
Conjugation:	Unconjugated
Storage:	Store at -20°C as received.
Stability:	Stable for 12 months from date of receipt.
Predicted Protein Size:	140 kDa
Gene Name:	polymerase (DNA) gamma, catalytic subunit
Database Link:	NP_001119603 Entrez Gene 5428 Human P54098
Background:	Mitochondrial DNA polymerase is heterotrimeric, consisting of a homodimer of accessory subunits plus a catalytic subunit. The protein encoded by this gene is the catalytic subunit of mitochondrial DNA polymerase. The encoded protein contains a polyglutamine tract near its N-terminus that may be polymorphic. Defects in this gene are a cause of progressive external ophthalmoplegia with mitochondrial DNA deletions 1 (PEOA1), sensory ataxic neuropathy dysarthria and ophthalmoparesis (SANDO), Alpers-Huttenlocher syndrome (AHS), and mitochondrial neurogastrointestinal encephalopathy syndrome (MNGIE). Two transcript variants encoding the same protein have been found for this gene. [provided by RefSeq]



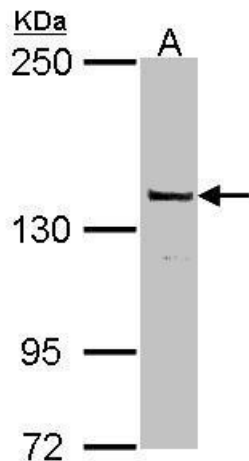
[View online »](#)

Synonyms: MDP1; MIRAS; MTDPS4A; MTDPS4B; PEO; POLG1; POLGA; SANDO; SCAE

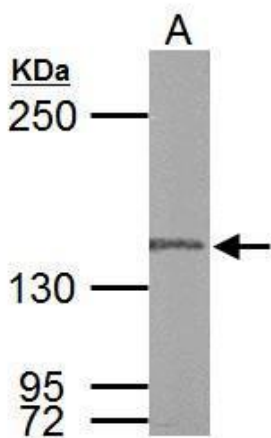
Protein Families: Druggable Genome

Protein Pathways: Metabolic pathways

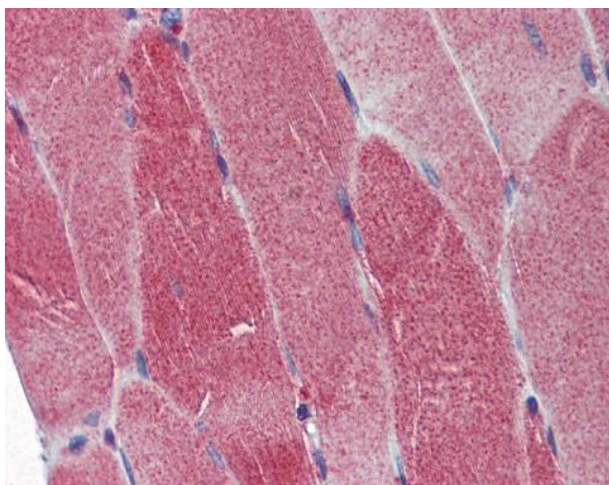
Product images:



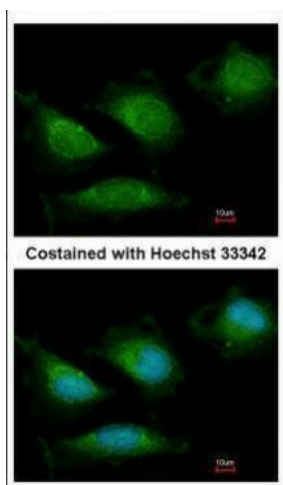
Sample (30 ug of whole cell lysate). A: MCF-7. 5% SDS PAGE. TA308753 diluted at 1:1000.



DNA polymerase gamma antibody detects POLG protein by Western blot analysis. A. 50 ug Rat testis lysate/extract. 5% SDS-PAGE. DNA polymerase gamma antibody (TA308753) dilution: 1:1000.



Immunohistochemical analysis of paraffin-embedded Skeletal Muscle, using DNA polymerase gamma (TA308753) antibody (10 ug/ml).



Immunofluorescence analysis of methanol-fixed HeLa, using DNA polymerase gamma (TA308753) antibody at 1:200 dilution.