

Product datasheet for **TA308752**

BAG5 Rabbit Polyclonal Antibody

Product data:

Product Type:	Primary Antibodies
Applications:	IF, WB
Recommended Dilution:	ICC/IF:1:100-1:1000; WB:1:500-1:3000
Reactivity:	Human (Predicted: Mouse, Rat, Bovine)
Host:	Rabbit
Isotype:	IgG
Clonality:	Polyclonal
Immunogen:	Recombinant fragment corresponding to a region within amino acids 1 and 195 of BAG5 (Uniprot ID#Q9UL15)
Formulation:	0.1M Tris, 0.1M Glycine, 10% Glycerol (pH7). 0.01% Thimerosal was added as a preservative.
Concentration:	lot specific
Purification:	Purified by antigen-affinity chromatography.
Conjugation:	Unconjugated
Storage:	Store at -20°C as received.
Stability:	Stable for 12 months from date of receipt.
Predicted Protein Size:	51 kDa
Gene Name:	BCL2 associated athanogene 5
Database Link:	NP_001015049 Entrez Gene 70369 Mouse Entrez Gene 366734 Rat Entrez Gene 9529 Human Q9UL15
Background:	The protein encoded by this gene is a member of the BAG1-related protein family. BAG1 is an anti-apoptotic protein that functions through interactions with a variety of cell apoptosis and growth related proteins including BCL-2, Raf-protein kinase, steroid hormone receptors, growth factor receptors and members of the heat shock protein 70 kDa family. This protein contains a BAG domain near the C-terminus, which could bind and inhibit the chaperone activity of Hsc70/Hsp70. Three transcript variants encoding two different isoforms have been found for this gene. [provided by RefSeq]
Synonyms:	BAG-5

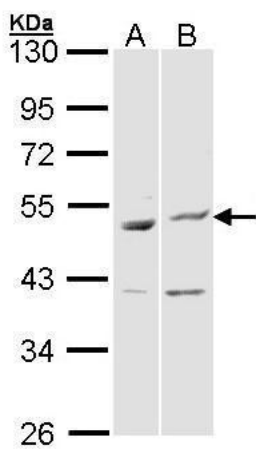


[View online »](#)

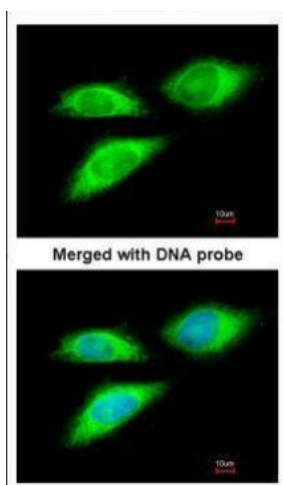
Note: Seq homology of immunogen across species: Mouse (92%), Rat (91%), Bovine (93%)

Protein Families: Druggable Genome

Product images:



Sample (30 ug of whole cell lysate). A: HeLa. B: Molt-4. 10% SDS PAGE. TA308752 diluted at 1:1000.



Immunofluorescence analysis of paraformaldehyde-fixed HeLa, using BAG5 (TA308752) antibody at 1:200 dilution.