

Product datasheet for **TA308751**

Fatty Acid Synthase (FASN) Rabbit Polyclonal Antibody

Product data:

Product Type:	Primary Antibodies
Applications:	IF, IHC, WB
Recommended Dilution:	ICC/IF:1:100-1:1000; IHC:1:100-1:1000; WB:1:500-1:3000
Reactivity:	Human, Mouse (Predicted: Rat, Bovine)
Host:	Rabbit
Isotype:	IgG
Clonality:	Polyclonal
Immunogen:	Recombinant fragment corresponding to a region within amino acids 401 and 694 of Fatty Acid Synthase (Uniprot ID#P49327)
Formulation:	0.1M Tris, 0.1M Glycine, 10% Glycerol (pH7). 0.01% Thimerosal was added as a preservative.
Concentration:	lot specific
Purification:	Purified by antigen-affinity chromatography.
Conjugation:	Unconjugated
Storage:	Store at -20°C as received.
Stability:	Stable for 12 months from date of receipt.
Predicted Protein Size:	273 kDa
Gene Name:	fatty acid synthase
Database Link:	NP_004095 Entrez Gene 14104 Mouse Entrez Gene 50671 Rat Entrez Gene 2194 Human P49327
Background:	The enzyme encoded by this gene is a multifunctional protein. Its main function is to catalyze the synthesis of palmitate from acetyl-CoA and malonyl-CoA, in the presence of NADPH, into long-chain saturated fatty acids. In some cancer cell lines, this protein has been found to be fused with estrogen receptor-alpha (ER-alpha), in which the N-terminus of FAS is fused in-frame with the C-terminus of ER-alpha. [provided by RefSeq]
Synonyms:	FAS; OA-519; SDR27X1
Note:	Seq homology of immunogen across species: Rat (85%), Bovine (81%)

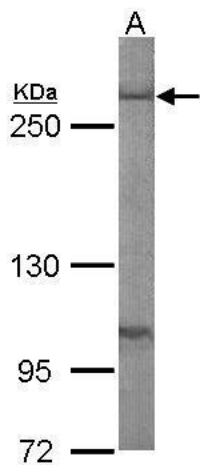


[View online »](#)

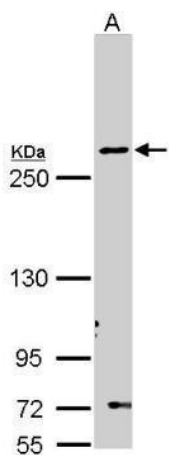
Protein Families: Druggable Genome

Protein Pathways: Fatty acid biosynthesis, Insulin signaling pathway, Metabolic pathways

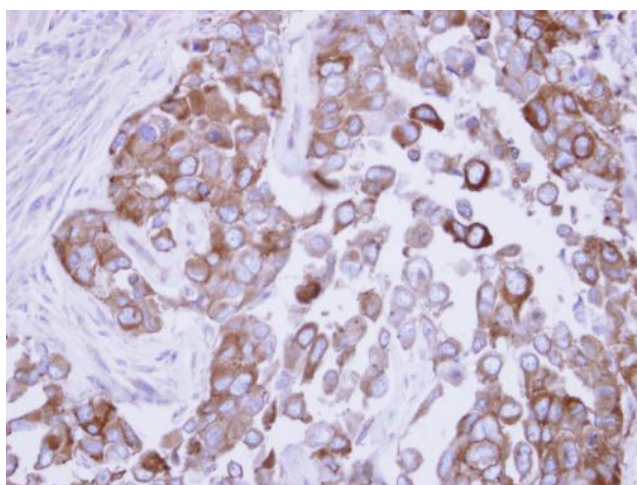
Product images:



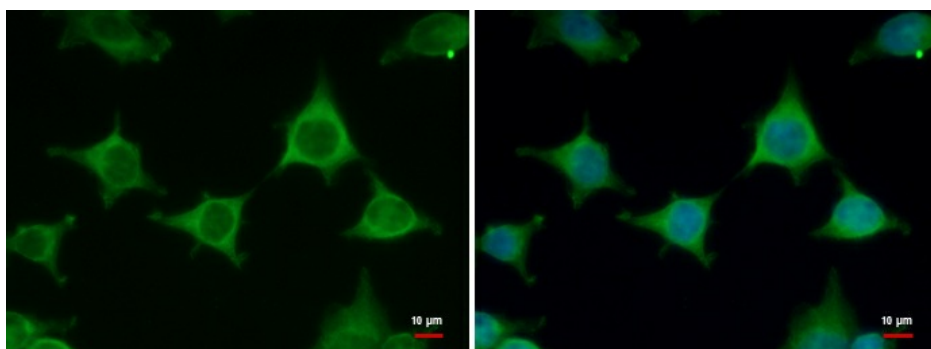
Sample (50 ug of whole cell lysate). A: mouse liver. 5% SDS PAGE. TA308751 diluted at 1:1000.



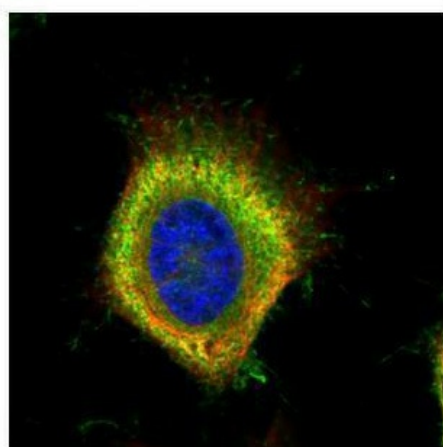
Sample (30 ug of whole cell lysate). A: Molt-4. 5% SDS PAGE. TA308751 diluted at 1:1000



Immunohistochemical analysis of paraffin-embedded OECM1 xenograft, using Fatty Acid Synthase (TA308751) antibody at 1:500 dilution.



Fatty Acid Synthase antibody [N1N2], N-term detects Fatty Acid Synthase protein at cytoplasm by immunofluorescent analysis. Sample: 293T cells were fixed in 4% paraformaldehyde at RT for 15 min. Green: Fatty Acid Synthase protein stained by Fatty Acid Syn



Confocal immunofluorescence analysis (Olympus FV10i) of paraformaldehyde-fixed HeLa, using Fatty Acid Synthase (TA308751) antibody (Green) at 1:500 dilution. Alpha-tubulin filaments were labeled with anti-alpha tubulin antibody (Red) at 1:2000.