

Product datasheet for **TA308749**

Rad9 (RAD9A) Rabbit Polyclonal Antibody

Product data:

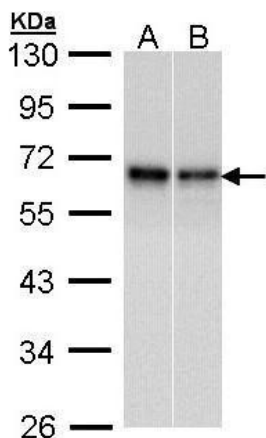
Product Type:	Primary Antibodies
Applications:	IF, IHC, WB
Recommended Dilution:	ICC/IF:1:100-1:1000; IHC:1:100-1:1000; WB:1:500-1:3000
Reactivity:	Human
Host:	Rabbit
Isotype:	IgG
Clonality:	Polyclonal
Immunogen:	Recombinant fragment contain a sequence corresponding to a region within amino acids 197 and 391 of Rad9
Formulation:	1XPBS, 1% BSA, 20% Glycerol (pH7). 0.01% Thimerosal was added as a preservative.
Concentration:	lot specific
Purification:	Purified by antigen-affinity chromatography.
Conjugation:	Unconjugated
Storage:	Store at -20°C as received.
Stability:	Stable for 12 months from date of receipt.
Predicted Protein Size:	43 kDa
Gene Name:	RAD9 checkpoint clamp component A
Database Link:	NP_004575 Entrez Gene 5883 Human Q99638
Background:	This gene product is highly similar to Schizosaccharomyces pombe rad9, a cell cycle checkpoint protein required for cell cycle arrest and DNA damage repair in response to DNA damage. This protein is found to possess 3' to 5' exonuclease activity, which may contribute to its role in sensing and repairing DNA damage. It forms a checkpoint protein complex with RAD1 and HUS1. This complex is recruited by checkpoint protein RAD17 to the sites of DNA damage, which is thought to be important for triggering the checkpoint-signaling cascade. Use of alternative polyA sites has been noted for this gene. [provided by RefSeq]
Synonyms:	RAD9



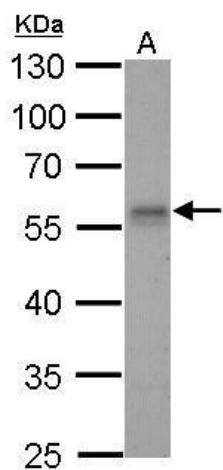
[View online »](#)

Protein Families: Druggable Genome, Stem cell - Pluripotency

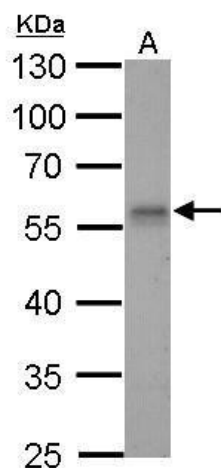
Product images:



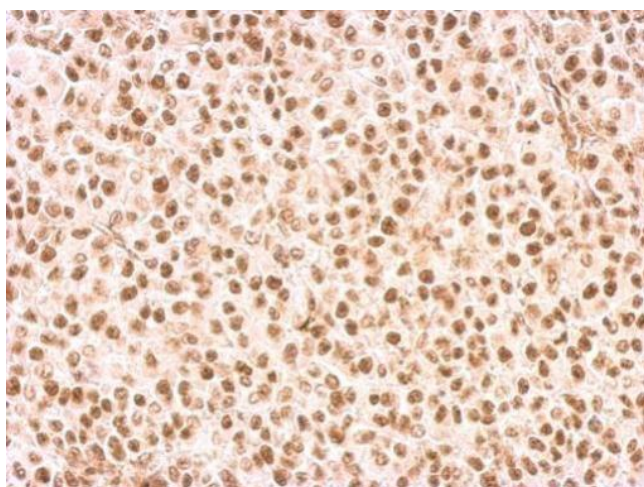
Sample (30 ug of whole cell lysate). A: A431. B: Hela. 10% SDS PAGE. TA308749 diluted at 1:1000.



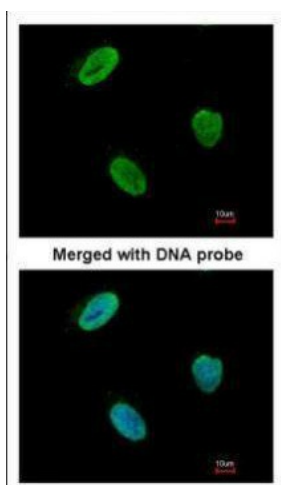
Rad9 antibody detects RAD9A protein by Western blot analysis. A. 30 ug Rat2 whole cell lysate/extract. 10 % SDS-PAGE. Rad9 antibody (TA308749) dilution: 1:1000



Rad9 antibody detects RAD9A protein by Western blot analysis. A. 30 ug C2C12 whole cell lysate/extract. 10 % SDS-PAGE. Rad9 antibody (TA308749) dilution: 1:500



Rad9 antibody detects RAD9A protein at nucleus on HBL435 xenograft by immunohistochemical analysis. Sample: Paraffin-embedded HBL435 xenograft. Rad9 antibody (TA308749) dilution: 1:500.



Immunofluorescence analysis of paraformaldehyde-fixed HeLa, using Rad9 (TA308749) antibody at 1:100 dilution.