

Product datasheet for **TA308747**

FBXO43 Rabbit Polyclonal Antibody

Product data:

Product Type:	Primary Antibodies
Applications:	IF, IHC, WB
Recommended Dilution:	ICC/IF:1:100-1:1000; IHC:1:100-1:1000; WB:1:500-1:3000
Reactivity:	Human (Predicted: Rat, Zebrafish, Xenopus)
Host:	Rabbit
Isotype:	IgG
Clonality:	Polyclonal
Immunogen:	Synthetic peptide corresponding to a region within amino acids 646 and 708 of FBXO43 (Uniprot ID#Q4G163)
Formulation:	1XPBS, 10% Glycerol (pH7). 0.01% Thimerosal was added as a preservative.
Concentration:	lot specific
Purification:	Purified by antigen-affinity chromatography.
Conjugation:	Unconjugated
Storage:	Store at -20°C as received.
Stability:	Stable for 12 months from date of receipt.
Predicted Protein Size:	78 kDa
Gene Name:	F-box protein 43
Database Link:	NP_001025031 Entrez Gene 315034 Rat Entrez Gene 286151 Human Q4G163
Background:	Members of the F-box protein family, such as FBXO43, are characterized by an approximately 40-amino acid F-box motif. SCF complexes, formed by SKP1 (MIM 601434), cullin (see CUL1; MIM 603134), and F-box proteins, act as protein-ubiquitin ligases. F-box proteins interact with SKP1 through the F box, and they interact with ubiquitination targets through other protein interaction domains (Jin et al., 2004 [PubMed 15520277]). [supplied by OMIM]
Synonyms:	EMI2; ERP1; FBX43

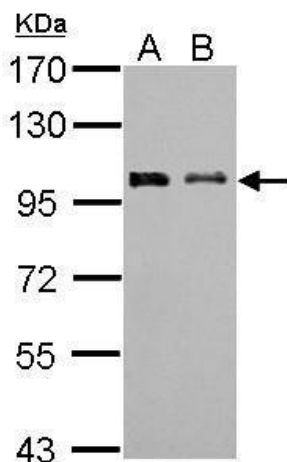


[View online »](#)

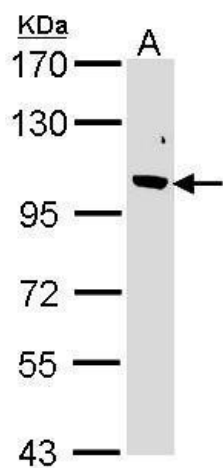
Note: Seq homology of immunogen across species: Rat (100%), Zebrafish (85%), Xenopus laevis (100%)

Protein Pathways: Oocyte meiosis

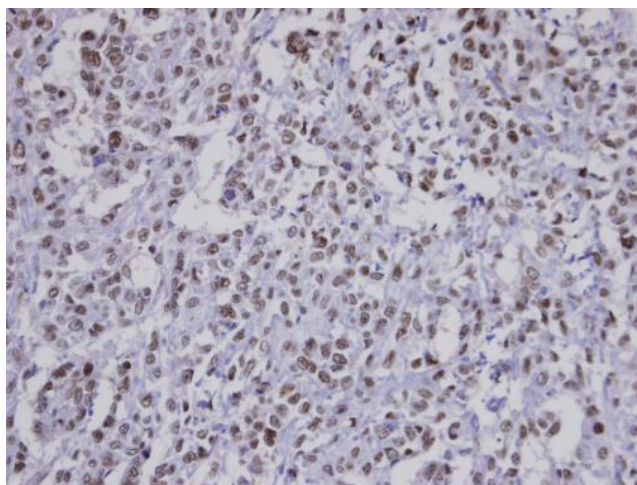
Product images:



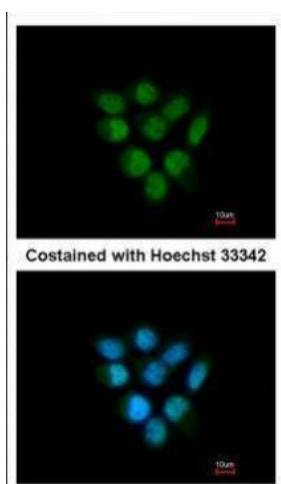
Sample (30 ug of whole cell lysate). A: NIH-3T3. B: JC. 7.5% SDS PAGE. TA308747 diluted at 1:1000.



Sample (30 ug of whole cell lysate). A: 293T. 7.5% SDS PAGE. TA308747 diluted at 1:1000.



Immunohistochemical analysis of paraffin-embedded Saos-2 xenograft, using FBXO43 (TA308747) antibody at 1:100 dilution.



Immunofluorescence analysis of paraformaldehyde-fixed A431, using FBXO43 (TA308747) antibody at 1:200 dilution.