

Product datasheet for **TA308745**

Axin 1 (AXIN1) Rabbit Polyclonal Antibody

Product data:

Product Type:	Primary Antibodies
Applications:	WB
Recommended Dilution:	WB:1:500-1:3000
Reactivity:	Human (Predicted: Mouse, Rat, Zebrafish, Xenopus, Chicken, Bovine)
Host:	Rabbit
Isotype:	IgG
Clonality:	Polyclonal
Immunogen:	Synthetic peptide corresponding to a region within amino acids 800 and 862 of AXIN1 (Uniprot ID#O15169)
Formulation:	1XPBS, 10% Glycerol (pH7). 0.01% Thimerosal was added as a preservative.
Concentration:	lot specific
Purification:	Purified by antigen-affinity chromatography.
Conjugation:	Unconjugated
Storage:	Store at -20°C as received.
Stability:	Stable for 12 months from date of receipt.
Predicted Protein Size:	96 kDa
Gene Name:	axin 1
Database Link:	NP_003493 Entrez Gene 12005 Mouse Entrez Gene 79257 Rat Entrez Gene 8312 Human O15169



[View online »](#)

Background: This gene encodes a cytoplasmic protein which contains a regulation of G-protein signaling (RGS) domain and a dishevelled and axin (DIX) domain. The encoded protein interacts with adenomatous polyposis coli, catenin (cadherin-associated protein), beta 1, 88kDa, glycogen synthase kinase 3 beta, protein phosphate 2, and itself. This protein functions as a negative regulator of the wingless-type MMTV integration site family, member 1 (WNT) signaling pathway and can induce apoptosis. The crystal structure of a portion of this protein, alone and in a complex with other proteins, has been resolved. Mutations in this gene have been associated with hepatocellular carcinoma, hepatoblastomas, ovarian endometriod adenocarcinomas, and medullablastomas. Two transcript variants encoding distinct isoforms have been identified for this gene. [provided by RefSeq]

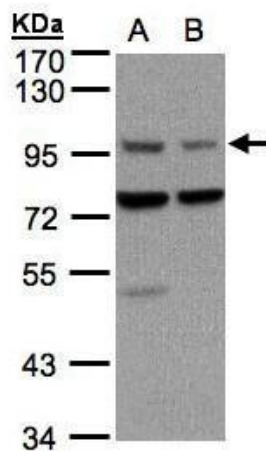
Synonyms: AXIN; PPP1R49

Note: Seq homology of immunogen across species: Mouse (100%), Rat (100%), Zebrafish (100%), Xenopus laevis (85%), Chicken (92%), Bovine (100%)

Protein Families: Druggable Genome, ES Cell Differentiation/IPS, Stem cell relevant signaling - Wnt Signaling pathway

Protein Pathways: Basal cell carcinoma, Colorectal cancer, Endometrial cancer, Pathways in cancer, Wnt signaling pathway

Product images:



Sample (30 ug of whole cell lysate). A:A431.
B:H1299. 7.5% SDS PAGE. TA308745 diluted at 1:1500