

Product datasheet for **TA308744**

EED Rabbit Polyclonal Antibody

Product data:

Product Type:	Primary Antibodies
Applications:	IF, IHC, WB
Recommended Dilution:	ICC/IF:1:100-1:1000; IHC:1:100-1:1000; WB:1:500-1:3000
Reactivity:	Human (Predicted: Rat, Bovine, Rhesus Monkey, Mouse)
Host:	Rabbit
Isotype:	IgG
Clonality:	Polyclonal
Immunogen:	Recombinant fragment contain a sequence corresponding to a region within amino acids 1 and 229 of EED (Uniprot ID#O75530)
Formulation:	0.1M Tris, 0.1M Glycine, 10% Glycerol (pH7). 0.01% Thimerosal was added as a preservative.
Concentration:	lot specific
Purification:	Purified by antigen-affinity chromatography.
Conjugation:	Unconjugated
Storage:	Store at -20°C as received.
Stability:	Stable for 12 months from date of receipt.
Predicted Protein Size:	50 kDa
Gene Name:	embryonic ectoderm development
Database Link:	NP_694536 Entrez Gene 13626 Mouse Entrez Gene 293104 Rat Entrez Gene 8726 Human O75530

Background: This gene encodes a member of the Polycomb-group (PcG) family. PcG family members form multimeric protein complexes, which are involved in maintaining the transcriptional repressive state of genes over successive cell generations. This protein interacts with enhancer of zeste 2, the cytoplasmic tail of integrin beta7, immunodeficiency virus type 1 (HIV-1) MA protein, and histone deacetylase proteins. This protein mediates repression of gene activity through histone deacetylation, and may act as a specific regulator of integrin function. Two transcript variants encoding distinct isoforms have been identified for this gene. [provided by RefSeq]



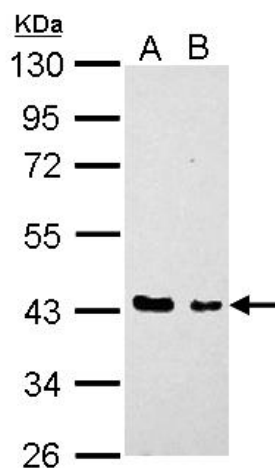
[View online »](#)

Synonyms: HEED; WAIT1

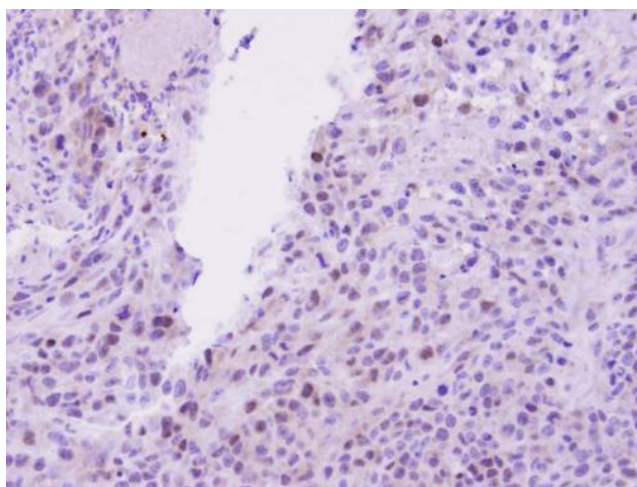
Note: Seq homology of immunogen across species: Mouse (100%), Rat (100%), Rhesus Monkey (100%), Bovine (100%)

Protein Families: Druggable Genome, Transcription Factors

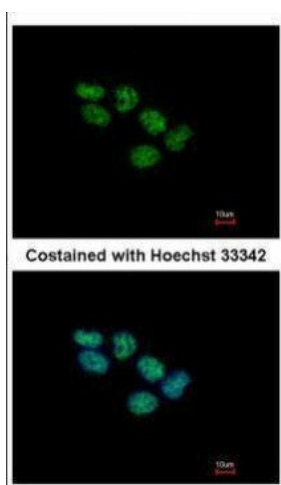
Product images:



EED antibody detects EED protein by Western blot analysis. A. 30 ug H1299 whole cell lysate/extract. B. 30 ug HCT116 whole cell lysate/extract. 10 % SDS-PAGE. EED antibody (TA308744) dilution: 1:1000



Immunohistochemical analysis of paraffin-embedded SAS Xenograft, using EED (TA308744) antibody at 1:100 dilution.



Immunofluorescence analysis of paraformaldehyde-fixed A431, using EED (TA308744) antibody at 1:500 dilution.