

Product datasheet for **TA308743**

TRIM21 Rabbit Polyclonal Antibody

Product data:

Product Type:	Primary Antibodies
Applications:	IF, IHC, WB
Recommended Dilution:	ICC/IF:1:100-1:1000; IHC:1:100-1:1000; WB:1:500-1:3000
Reactivity:	Human (Predicted: Pig, Bovine)
Host:	Rabbit
Isotype:	IgG
Clonality:	Polyclonal
Immunogen:	Recombinant fragment corresponding to a region within amino acids 254 and 475 of SSA1 (Uniprot ID#P19474)
Formulation:	1XPBS, 20% Glycerol (pH7). 0.025% ProClin 300 was added as a preservative.
Purification:	Purified by antigen-affinity chromatography.
Conjugation:	Unconjugated
Storage:	Store at -20°C as received.
Stability:	Stable for 12 months from date of receipt.
Predicted Protein Size:	54 kDa
Gene Name:	tripartite motif containing 21
Database Link:	NP_003132 Entrez Gene 6737 Human P19474
Background:	This gene encodes a member of the tripartite motif (TRIM) family. The TRIM motif includes three zinc-binding domains, a RING, a B-box type 1 and a B-box type 2, and a coiled-coil region. The encoded protein is part of the RoSSA ribonucleoprotein, which includes a single polypeptide and one of four small RNA molecules. The RoSSA particle localizes to both the cytoplasm and the nucleus. RoSSA interacts with autoantigens in patients with Sjogren syndrome and systemic lupus erythematosus. Alternatively spliced transcript variants for this gene have been described but the full-length nature of only one has been determined. [provided by RefSeq]
Synonyms:	RNF81; Ro; RO52; SSA; SSA1



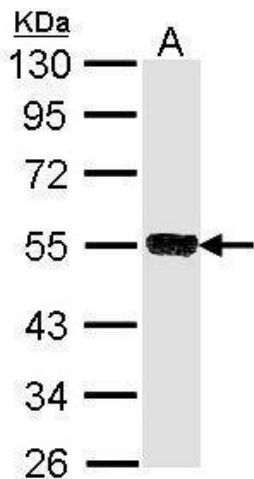
[View online »](#)

Note: Seq homology of immunogen across species: Pig (81%), Bovine (82%)

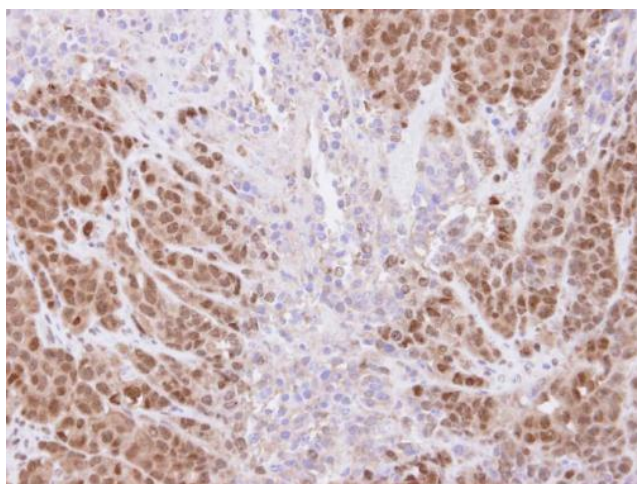
Protein Families: Druggable Genome

Protein Pathways: Systemic lupus erythematosus

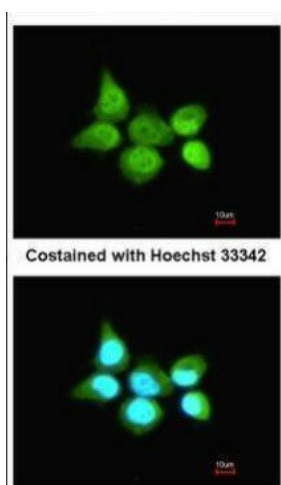
Product images:



Sample (30 ug of whole cell lysate). A: Molt-4. 10% SDS PAGE. TA308743 diluted at 1:1000.



Immunohistochemical analysis of paraffin-embedded DLD-1 xenograft, using SSA1 (TA308743) antibody at 1:500 dilution.



Immunofluorescence analysis of paraformaldehyde-fixed A431, using SSA1 (TA308743) antibody at 1:200 dilution.