

Product datasheet for **TA308742**

LDB1 Rabbit Polyclonal Antibody

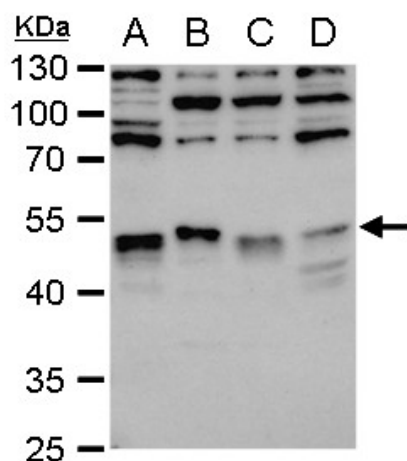
Product data:

Product Type:	Primary Antibodies
Applications:	IF, IHC, IP, WB
Recommended Dilution:	ICC/IF:1:100-1:1000; IHC:1:100-1:1000; WB:1:500-1:3000
Reactivity:	Human, Mouse (Predicted: Rhesus Monkey)
Host:	Rabbit
Isotype:	IgG
Clonality:	Polyclonal
Immunogen:	Recombinant fragment corresponding to a region within amino acids 86 and 411 of LDB1 (Uniprot ID#Q86U70)
Formulation:	1XPBS, 20% Glycerol (pH7). 0.025% ProClin 300 was added as a preservative.
Purification:	Purified by antigen-affinity chromatography.
Conjugation:	Unconjugated
Storage:	Store at -20°C as received.
Stability:	Stable for 12 months from date of receipt.
Predicted Protein Size:	43 kDa
Gene Name:	LIM domain binding 1
Database Link:	NP_001106878 Entrez Gene 16825 Mouse Entrez Gene 8861 Human Q86U70
Synonyms:	CLIM2; NLI
Note:	Seq homology of immunogen across species: Rhesus Monkey (100%)
Protein Families:	Transcription Factors

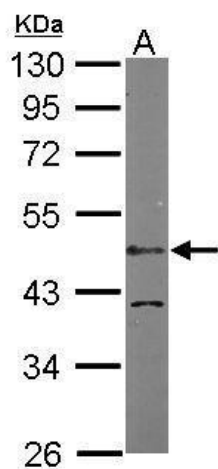


[View online »](#)

Product images:



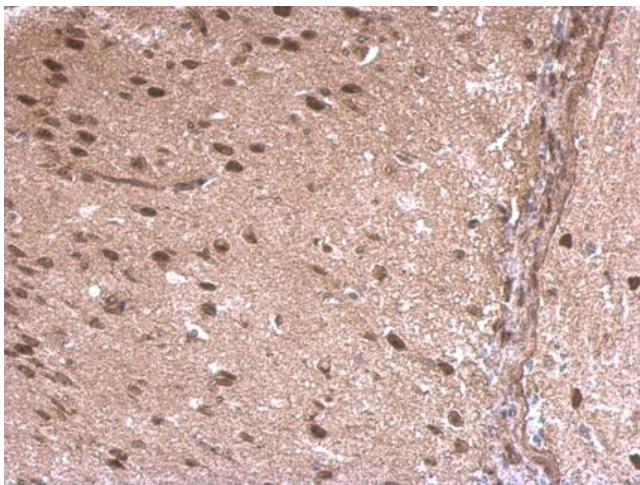
LDB1 antibody [N2C3] detects LDB1 protein by western blot analysis. A. 30 ug 293T whole cell extract. B. 30 ug A431 whole cell extract. C. 30 ug HeLa whole cell extract. D. 30 ug HepG2 whole cell extract. 10 % SDS-PAGE. LDB1 antibody [N2C3] (TA308742) dil



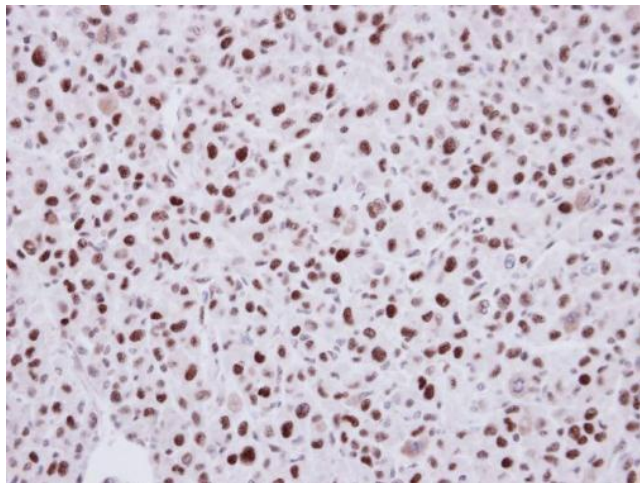
Sample (50 ug of whole cell lysate). A: Mouse brain. 10% SDS PAGE. TA308742 diluted at 1:1000.



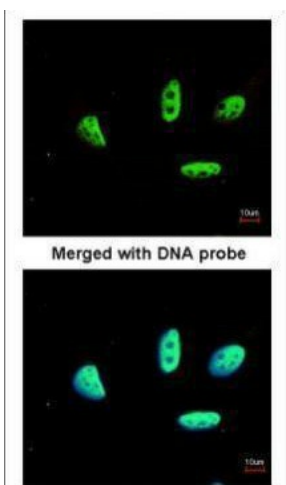
LDB1 antibody [N2C3] detects LDB1 protein at nucleus on mouse muscle by immunohistochemical analysis. Sample: Paraffin-embedded mouse muscle. LDB1 antibody [N2C3] (TA308742) dilution: 1:500.



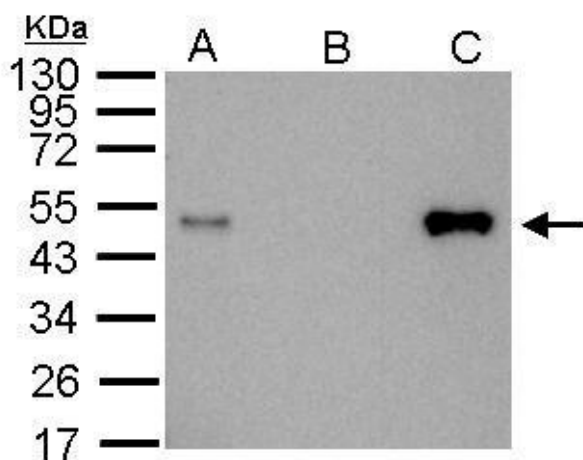
LDB1 antibody [N2C3] detects LDB1 protein at nucleus on rat middle brain by immunohistochemical analysis. Sample: Paraffin-embedded rat middle brain. LDB1 antibody [N2C3] (TA308742) dilution: 1:500.



Immunohistochemical analysis of paraffin-embedded U87 Xenograft, using LDB1 (TA308742) antibody at 1:100 dilution.



Immunofluorescence analysis of paraformaldehyde-fixed HeLa, using LDB1 (TA308742) antibody at 1:200 dilution.



LDB1 antibody immunoprecipitates LDB1 protein in IP experiments. IP Sample: 1000 ug 293T whole cell lysate/extract. A. 20 ug 293T whole cell lysate/extract. B. Control with 2.5 ug of preimmune rabbit IgG. C. Immunoprecipitation of LDB1 protein by 2.5 ug of