

Product datasheet for **TA308740**

FANCC Rabbit Polyclonal Antibody

Product data:

Product Type:	Primary Antibodies
Applications:	IF, IHC, WB
Recommended Dilution:	ICC/IF:1:100-1:1000; IHC:1:100-1:1000; WB:1:500-1:3000
Reactivity:	Human, Mouse
Host:	Rabbit
Isotype:	IgG
Clonality:	Polyclonal
Immunogen:	Recombinant fragment corresponding to a region within amino acids 1 and 305 of FANCC (Uniprot ID#Q00597)
Formulation:	0.1M Tris, 0.1M Glycine, 10% Glycerol (pH7). 0.01% Thimerosal was added as a preservative.
Concentration:	lot specific
Purification:	Purified by antigen-affinity chromatography.
Conjugation:	Unconjugated
Storage:	Store at -20°C as received.
Stability:	Stable for 12 months from date of receipt.
Predicted Protein Size:	63 kDa
Gene Name:	Fanconi anemia complementation group C
Database Link:	NP_000127 Entrez Gene 14088 Mouse Entrez Gene 2176 Human Q00597



[View online »](#)

Background:

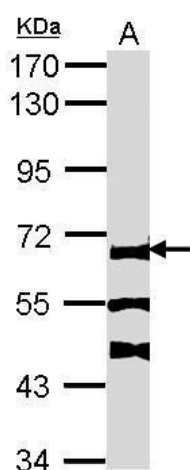
The Fanconi anemia complementation group (FANCC) currently includes FANCA, FANCB, FANCC, FANCD1 (also called BRCA2), FANCD2, FANCE, FANCF, FANCG, FANCI, FANCI (also called BRIP1), FANCL, FANCM and FANCN (also called PALB2). The previously defined group FANCH is the same as FANCA. Fanconi anemia is a genetically heterogeneous recessive disorder characterized by cytogenetic instability, hypersensitivity to DNA crosslinking agents, increased chromosomal breakage, and defective DNA repair. The members of the Fanconi anemia complementation group do not share sequence similarity; they are related by their assembly into a common nuclear protein complex. This gene encodes the protein for complementation group C. [provided by RefSeq]

Synonyms:

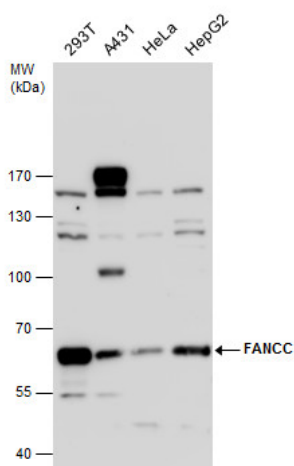
FA3; FAC; FACC

Protein Families:

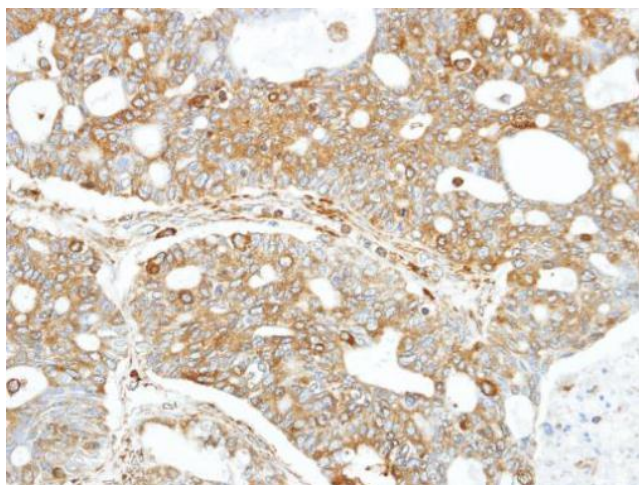
Druggable Genome

Product images:


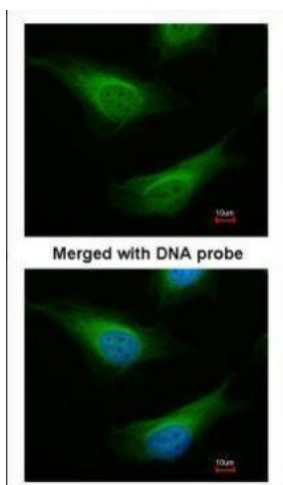
Sample (30 ug of whole cell lysate). A: NIH-3T3. 7.5% SDS PAGE. FANCC antibody. TA308740 diluted at 1:1000.



FANCC antibody detects FANCC protein by western blot analysis. Various whole cell extracts (30 ug) were separated by 7.5 % SDS-PAGE, and blotted with FANCC antibody (TA308740) diluted by 1:1000



Immunohistochemical analysis of paraffin-embedded OVCA xenograft, using FANCC (TA308740) antibody at 1:100 dilution.



Immunofluorescence analysis of paraformaldehyde-fixed HeLa, using FANCC (TA308740) antibody at 1:200 dilution.