

## Product datasheet for **TA308737**

### Alkaline Phosphatase (ALPI) Rabbit Polyclonal Antibody

#### Product data:

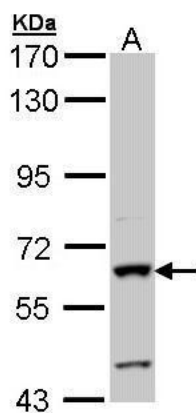
Product Type:	Primary Antibodies
Applications:	IHC, WB
Recommended Dilution:	IHC:1:100-1:1000; WB:1:500-1:3000
Reactivity:	Human (Predicted: Mouse, Rat, Bovine)
Host:	Rabbit
Isotype:	IgG
Clonality:	Polyclonal
Immunogen:	Recombinant fragment contain a sequence corresponding to a region within amino acids 3 and 206 of Alkaline phosphatase (intestinal) (Uniprot ID#P09923)
Formulation:	0.1M Tris, 0.1M Glycine, 10% Glycerol (pH7). 0.01% Thimerosal was added as a preservative.
Concentration:	lot specific
Purification:	Purified by antigen-affinity chromatography.
Conjugation:	Unconjugated
Storage:	Store at -20°C as received.
Stability:	Stable for 12 months from date of receipt.
Predicted Protein Size:	57 kDa
Gene Name:	alkaline phosphatase, intestinal
Database Link:	<a href="#">NP_001622</a> <a href="#">Entrez Gene 24197 Rat</a> <a href="#">Entrez Gene 76768 Mouse</a> <a href="#">Entrez Gene 248 Human</a> <a href="#">P09923</a>
Background:	There are at least four distinct but related alkaline phosphatases: intestinal, placental, placental-like, and liver/bone/kidney (tissue non-specific). The intestinal alkaline phosphatase gene encodes a digestive brush-border enzyme. This enzyme is upregulated during small intestinal epithelial cell differentiation. [provided by RefSeq]
Synonyms:	IAP
Note:	Seq homology of immunogen across species: Mouse (87%), Rat (87%), Bovine (85%)
Protein Families:	Druggable Genome



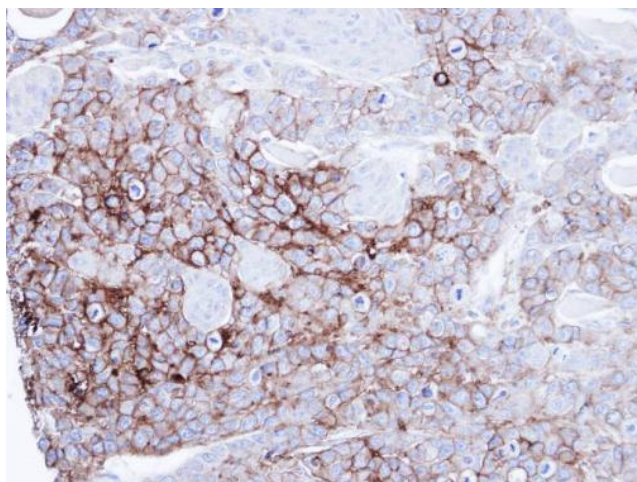
[View online »](#)

Protein Pathways: Folate biosynthesis, Metabolic pathways

### Product images:



Sample (30 ug of whole cell lysate). A: Hep G2.  
7.5% SDS PAGE. TA308737 diluted at 1:1000.



Immunohistochemical analysis of paraffin-embedded SG xenograft, using alkaline phosphatase (intestinal) (TA308737) antibody at 1:100 dilution.