

Product datasheet for **TA308736**

CAMK2D Rabbit Polyclonal Antibody

Product data:

Product Type:	Primary Antibodies
Applications:	IF, WB
Recommended Dilution:	ICC/IF:1:100-1:1000; WB:1:500-1:20000
Reactivity:	Human, Mouse (Predicted: Pig)
Host:	Rabbit
Isotype:	IgG
Clonality:	Polyclonal
Immunogen:	Recombinant fragment contain a sequence corresponding to a region within amino acids 249 and 445 of CaMK2D (Uniprot ID#Q13557)
Formulation:	1XPBS, 20% Glycerol (pH7). 0.025% ProClin 300 was added as a preservative.
Concentration:	lot specific
Purification:	Purified by antigen-affinity chromatography.
Conjugation:	Unconjugated
Storage:	Store at -20°C as received.
Stability:	Stable for 12 months from date of receipt.
Predicted Protein Size:	54 kDa
Gene Name:	calcium/calmodulin dependent protein kinase II delta
Database Link:	NP_742127 Entrez Gene 108058 Mouse Entrez Gene 817 Human Q13557
Background:	The product of this gene belongs to the serine/threonine protein kinase family and to the Ca(2+)/calmodulin-dependent protein kinase subfamily. Calcium signaling is crucial for several aspects of plasticity at glutamatergic synapses. In mammalian cells, the enzyme is composed of four different chains: alpha, beta, gamma, and delta. The product of this gene is a delta chain. Alternative splicing results in multiple transcript variants encoding distinct isoforms. Distinct isoforms of this chain have different expression patterns.
Synonyms:	CAMKD



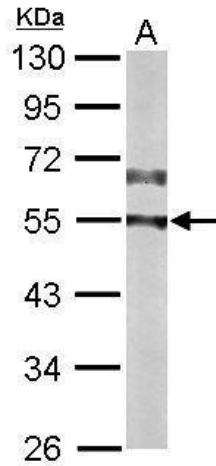
[View online »](#)

Note: Seq homology of immunogen across species: Pig (100%)

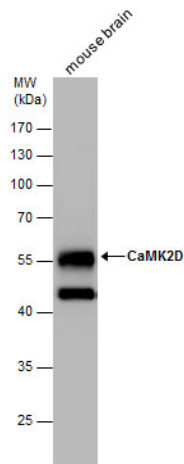
Protein Families: Druggable Genome, Protein Kinase

Protein Pathways: Calcium signaling pathway, ErbB signaling pathway, Glioma, GnRH signaling pathway, Long-term potentiation, Melanogenesis, Neurotrophin signaling pathway, Olfactory transduction, Oocyte meiosis, Wnt signaling pathway

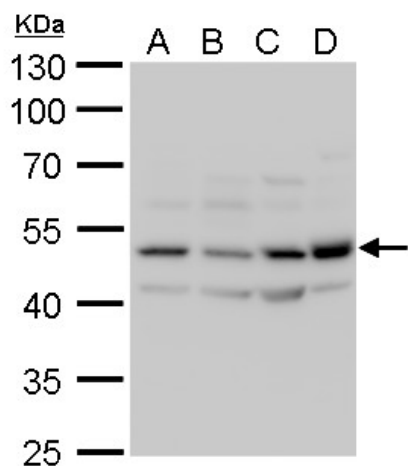
Product images:



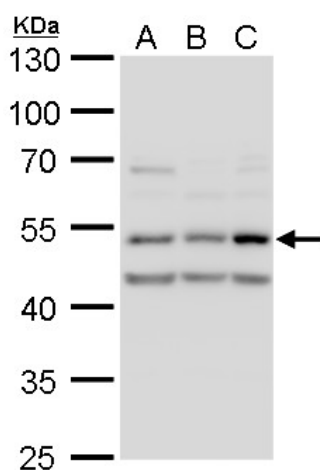
Sample (50 ug of whole cell lysate). A: Mouse brain. 10% SDS PAGE. TA308736 diluted at 1:10000.



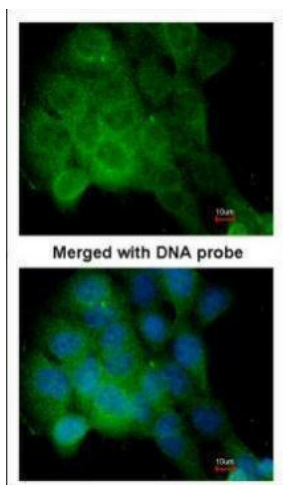
CaMK2D antibody detects CaMK2D protein by western blot analysis. Mouse tissue extracts (50 ug) was separated by 10 % SDS-PAGE, and the membrane was blotted with CaMK2D antibody (TA308736) diluted by 1:10000.



CaMK2D antibody detects CaMK2D protein by western blot analysis. A. 30 ug 293T whole cell lysate/extract. B. 30 ug A431 whole cell lysate/extract. C. 30 ug HeLa whole cell lysate/extract. D. 30 ug HepG2 whole cell lysate/extract. 10 % SDS-PAGE. CaMK2D ant



CaMK2D antibody detects CaMK2D protein by western blot analysis. A. 30 ug A549 whole cell lysate/extract. B. 30 ug H1299 whole cell lysate/extract. C. 30 ug HCT116 whole cell lysate/extract. 10 % SDS-PAGE. CaMK2D antibody (TA308736) dilution: 1:1000



Immunofluorescence analysis of paraformaldehyde-fixed A431, using CaMKII delta (TA308736) antibody at 1:200 dilution.