

Product datasheet for **TA308734**

PI 3 Kinase regulatory subunit 4 (PIK3R4) Rabbit Polyclonal Antibody

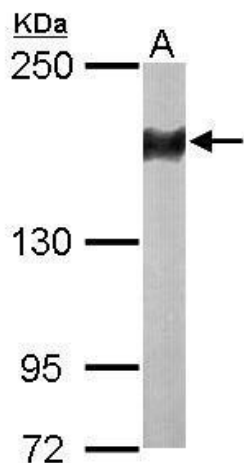
Product data:

Product Type:	Primary Antibodies
Applications:	IF, IHC, WB
Recommended Dilution:	ICC/IF:1:100-1:1000; IHC:1:100-1:1000; WB:1:500-1:3000
Reactivity:	Human, Mouse (Predicted: <i>X. tropicalis</i>)
Host:	Rabbit
Isotype:	IgG
Clonality:	Polyclonal
Immunogen:	Recombinant fragment corresponding to a region within amino acids 1 and 381 of PIK3R4 (Uniprot ID#Q99570)
Formulation:	0.1M Tris, 0.1M Glycine, 10% Glycerol (pH7). 0.01% Thimerosal was added as a preservative.
Concentration:	lot specific
Purification:	Purified by antigen-affinity chromatography.
Conjugation:	Unconjugated
Storage:	Store at -20°C as received.
Stability:	Stable for 12 months from date of receipt.
Predicted Protein Size:	153 kDa
Gene Name:	phosphoinositide-3-kinase regulatory subunit 4
Database Link:	NP_055417 Entrez Gene 75669 Mouse Entrez Gene 30849 Human Q99570
Synonyms:	p150; VPS15
Note:	Seq homology of immunogen across species: <i>Xenopus tropicalis</i> (89%)
Protein Families:	Druggable Genome, Protein Kinase
Protein Pathways:	Regulation of autophagy

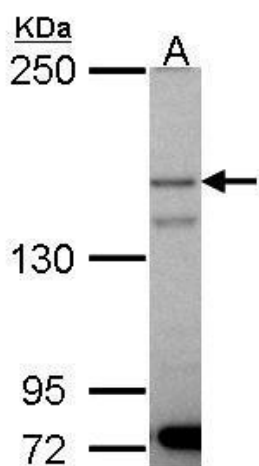


[View online »](#)

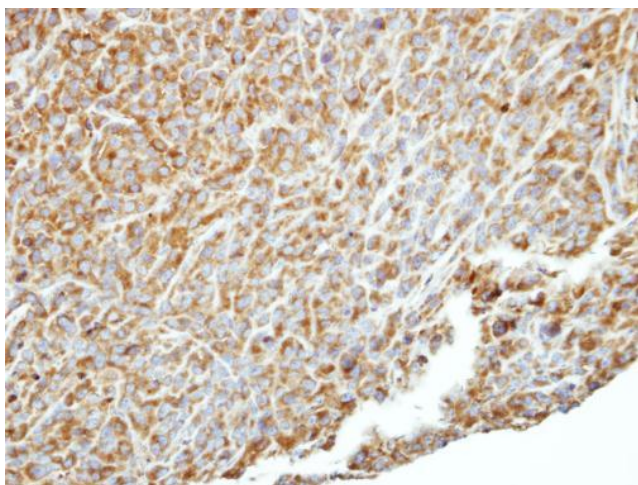
Product images:



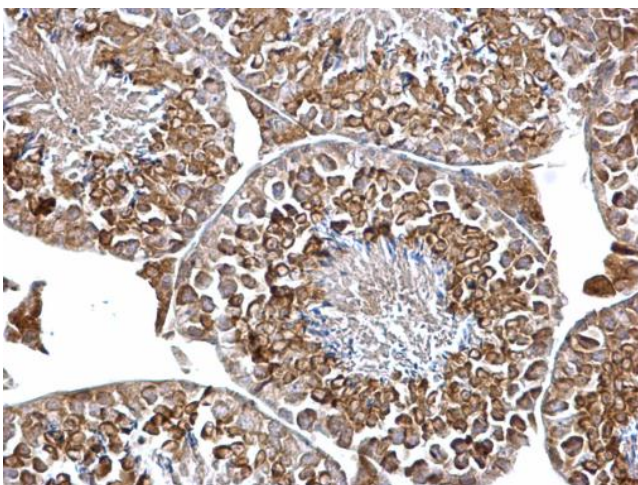
Sample (50 ug of whole cell lysate). A: Mouse liver. 5% SDS PAGE. TA308734 diluted at 1:500.



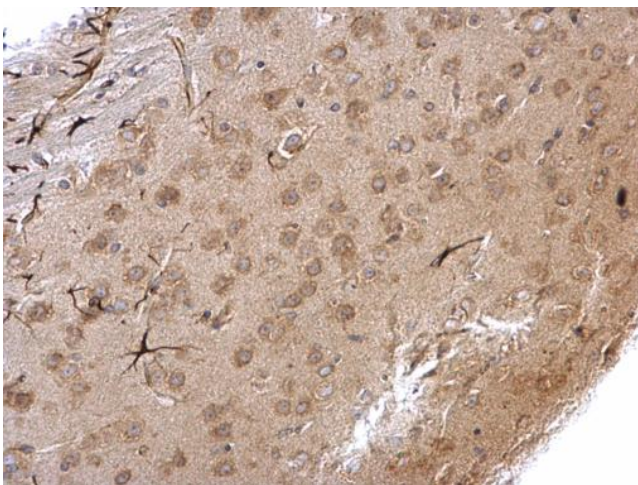
Sample (30 ug of whole cell lysate). A: A431. 5% SDS PAGE. TA308734 diluted at 1:1000.



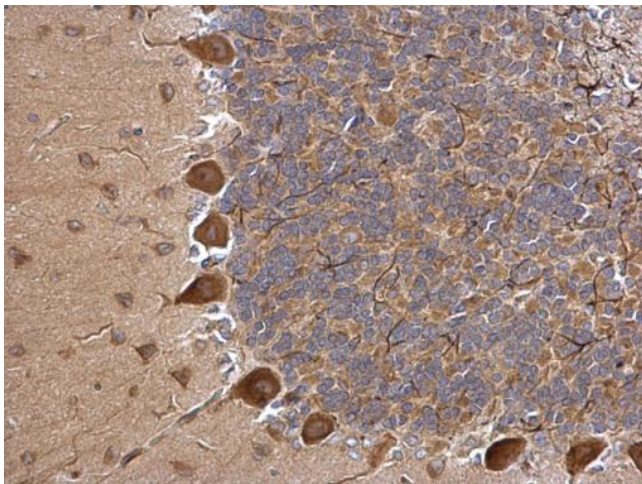
Immunohistochemical analysis of paraffin-embedded SAS xenograft, using PI3-Kinase p150 (TA308734) antibody at 1:500 dilution.



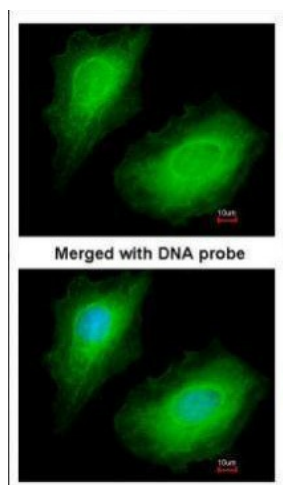
PI3-Kinase p150 antibody detects PI3-Kinase p150 protein at cytosol on mouse testis by immunohistochemical analysis. Sample: Paraffin-embedded mouse testis. PI3-Kinase p150 antibody (TA308734) dilution: 1:500.



PI3-Kinase p150 antibody detects PI3-Kinase p150 protein at cytosol on mouse fore brain by immunohistochemical analysis. Sample: Paraffin-embedded mouse fore brain. PI3-Kinase p150 antibody (TA308734) dilution: 1:500.



PI3-Kinase p150 antibody detects PI3-Kinase p150 protein at cytosol on rat hind brain by immunohistochemical analysis. Sample: Paraffin-embedded rat hind brain. PI3-Kinase p150 antibody (TA308734) dilution: 1:500.



Immunofluorescence analysis of paraformaldehyde-fixed HeLa, using p150 (PI3-Kinase p150) (TA308734) antibody at 1:200 dilution.