

Product datasheet for **TA308733**

SAE1 Rabbit Polyclonal Antibody

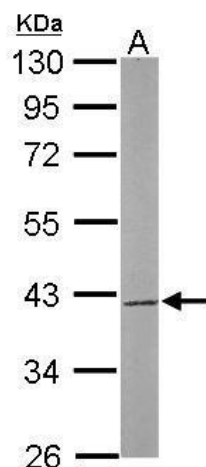
Product data:

Product Type:	Primary Antibodies
Applications:	IF, IHC, WB
Recommended Dilution:	ICC/IF:1:100-1:1000; IHC:1:100-1:1000; WB:1:500-1:3000
Reactivity:	Human, Mouse (Predicted: Chimpanzee)
Host:	Rabbit
Isotype:	IgG
Clonality:	Polyclonal
Immunogen:	Recombinant fragment corresponding to a region within amino acids 3 and 247 of SAE1 (Uniprot ID#Q9UBE0)
Formulation:	0.1M Tris, 0.1M Glycine, 20% Glycerol (pH7). 0.01% Thimerosal was added as a preservative.
Concentration:	lot specific
Purification:	Purified by antigen-affinity chromatography.
Conjugation:	Unconjugated
Storage:	Store at -20°C as received.
Stability:	Stable for 12 months from date of receipt.
Predicted Protein Size:	38 kDa
Database Link:	NP_057486 Entrez Gene 56459 Mouse
Synonyms:	AOS1; FLJ3091; HSPC140; SUA1; UBLE1A
Note:	Seq homology of immunogen across species: Chimpanzee (100%)
Protein Pathways:	Ubiquitin mediated proteolysis

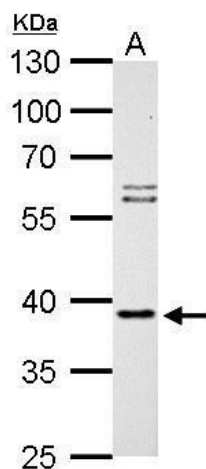


[View online »](#)

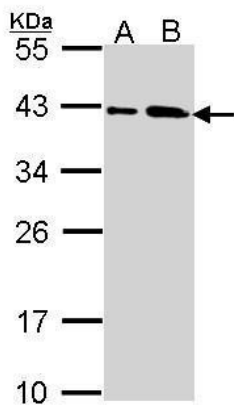
Product images:



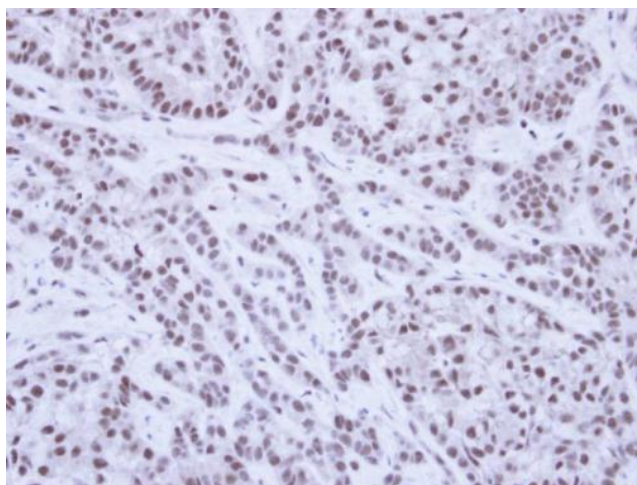
Sample (50 ug of whole cell lysate). A: Mouse brain. 10% SDS PAGE. TA308733 diluted at 1:1000.



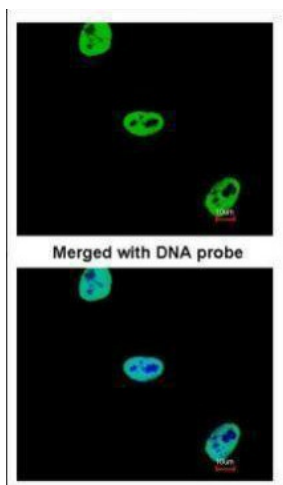
SAE1 antibody detects SAE1 protein by Western blot analysis. A. 30 ug Rat2 whole cell lysate/extract. 10 % SDS-PAGE. SAE1 antibody (TA308733) dilution: 1:1000



Sample (30 ug of whole cell lysate). A: A431. B: H1299. 10% SDS PAGE. TA308733 diluted at 1:1000.



Immunohistochemical analysis of paraffin-embedded A549 Xenograft, using SAE1 (TA308733) antibody at 1:100 dilution.



Immunofluorescence analysis of paraformaldehyde-fixed HeLa, using SAE1 (TA308733) antibody at 1:200 dilution.