

Product datasheet for **TA308732**

NuMA (NUMA1) Rabbit Polyclonal Antibody

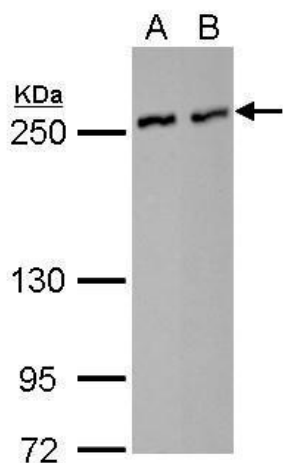
Product data:

Product Type:	Primary Antibodies
Applications:	IF, IHC, WB
Recommended Dilution:	ICC/IF:1:100-1:1000; IHC:1:100-1:1000; WB:1:500-1:3000
Reactivity:	Human
Host:	Rabbit
Isotype:	IgG
Clonality:	Polyclonal
Immunogen:	Recombinant fragment corresponding to a region within amino acids 1 and 339 of NuMA (Uniprot ID#Q14980)
Formulation:	1XPBS, 20% Glycerol (pH7). 0.025% ProClin 300 was added as a preservative.
Concentration:	lot specific
Purification:	Purified by antigen-affinity chromatography.
Conjugation:	Unconjugated
Storage:	Store at -20°C as received.
Stability:	Stable for 12 months from date of receipt.
Predicted Protein Size:	109 kDa
Gene Name:	nuclear mitotic apparatus protein 1
Database Link:	NP_006176 Entrez Gene 4926 Human Q14980
Synonyms:	NMP-22; NUMA

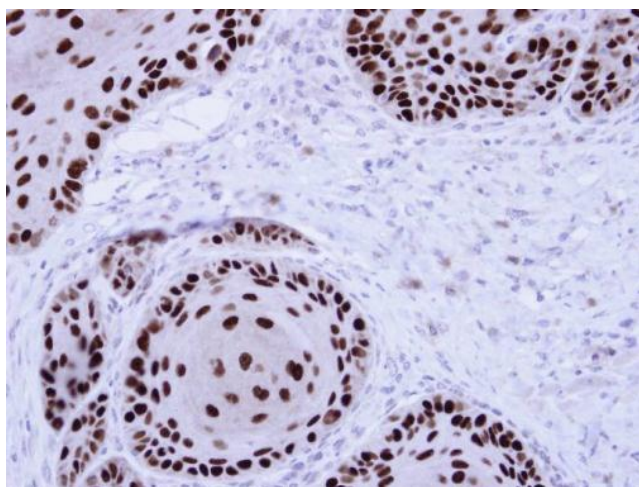


[View online »](#)

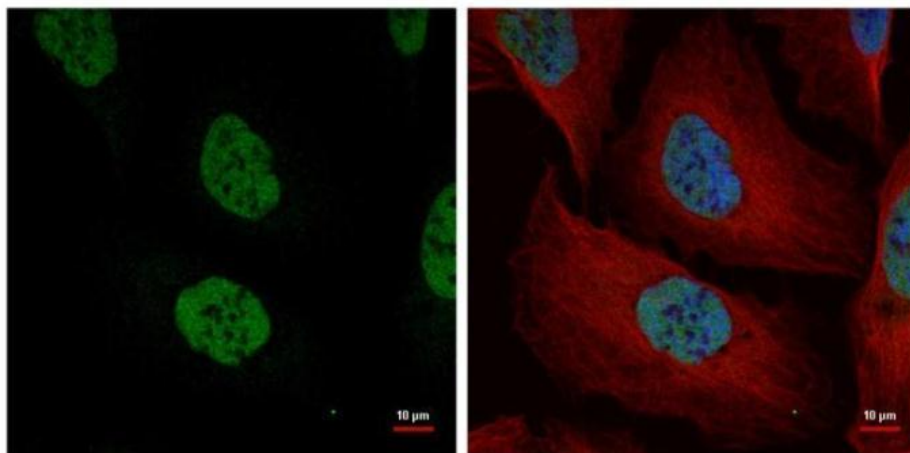
Product images:



NuMA antibody [N1], N-term detects NUMA1 protein by Western blot analysis. A. 30 ug HeLa whole cell lysate/extract. B. 30 ug A375 whole cell lysate/extract. 5 % SDS-PAGE. NuMA antibody [N1], N-term (TA308732) dilution: 1:1000



Immunohistochemical analysis of paraffin-embedded Cal27 Xenograft, using NuMA (TA308732) antibody at 1:100 dilution.



Confocal immunofluorescence analysis (Olympus FV10i) of paraformaldehyde-fixed U2OS, using NuMA (TA308732) antibody (Green) at 1:500 dilution. Alpha-tubulin filaments were labeled with anti-alpha tubulin antibody (Red) at 1:2000.