

## Product datasheet for **TA308731**

### PSMB8 Rabbit Polyclonal Antibody

#### Product data:

Product Type:	Primary Antibodies
Applications:	IF, IHC, WB
Recommended Dilution:	ICC/IF:1:100-1:1000; IHC:1:100-1:1000; WB:1:500-1:3000
Reactivity:	Human (Predicted: Rat, Dog, Pig, Xenopus, Zebrafish, Bovine)
Host:	Rabbit
Isotype:	IgG
Clonality:	Polyclonal
Immunogen:	Recombinant fragment corresponding to a region within amino acids 52 and 276 of PSMB8 (Uniprot ID#P28062)
Formulation:	0.1M Tris, 0.1M Glycine, 20% Glycerol (pH7). 0.01% Thimerosal was added as a preservative.
Concentration:	lot specific
Purification:	Purified by antigen-affinity chromatography.
Conjugation:	Unconjugated
Storage:	Store at -20°C as received.
Stability:	Stable for 12 months from date of receipt.
Predicted Protein Size:	30 kDa
Gene Name:	proteasome subunit beta 8
Database Link:	<a href="#">NP_004150</a> <a href="#">Entrez Gene 24968 Rat</a> <a href="#">Entrez Gene 474865 Dog</a> <a href="#">Entrez Gene 5696 Human</a> <a href="#">P28062</a>



[View online »](#)

**Background:**

The proteasome is a multicatalytic proteinase complex with a highly ordered ring-shaped 20S core structure. The core structure is composed of 4 rings of 28 non-identical subunits; 2 rings are composed of 7 alpha subunits and 2 rings are composed of 7 beta subunits. Proteasomes are distributed throughout eukaryotic cells at a high concentration and cleave peptides in an ATP/ubiquitin-dependent process in a non-lysosomal pathway. An essential function of a modified proteasome, the immunoproteasome, is the processing of class I MHC peptides. This gene encodes a member of the proteasome B-type family, also known as the T1B family, that is a 20S core beta subunit. This gene is located in the class II region of the MHC (major histocompatibility complex). Expression of this gene is induced by gamma interferon and this gene product replaces catalytic subunit 3 (proteasome beta 5 subunit) in the immunoproteasome. Proteolytic processing is required to generate a mature subunit. Two alternative transcripts encoding two isoforms have been identified; both isoforms are processed to yield the same mature subunit. [provided by RefSeq]

**Synonyms:**

ALDD; D6S216; D6S216E; JMP; LMP7; NKJO; PSMB5i; RING10

**Note:**

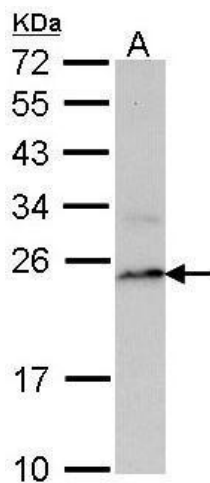
Seq homology of immunogen across species: Dog (91%), Pig (94%), Rat (94%), *Xenopus laevis* (83%), Zebrafish (82%), Bovine (93%), *Xenopus tropicalis* (82%)

**Protein Families:**

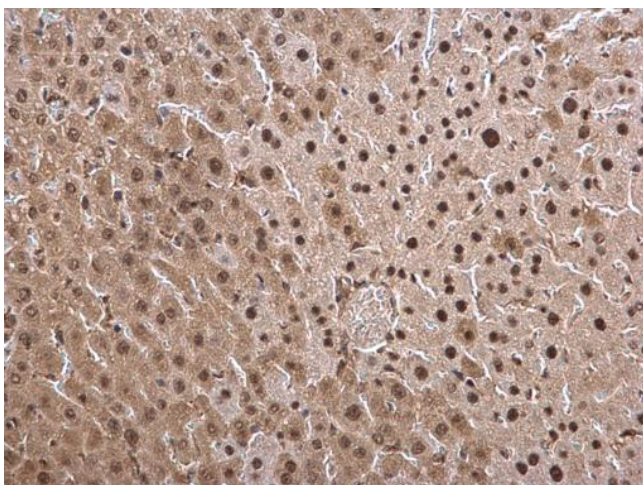
Druggable Genome, Protease

**Protein Pathways:**

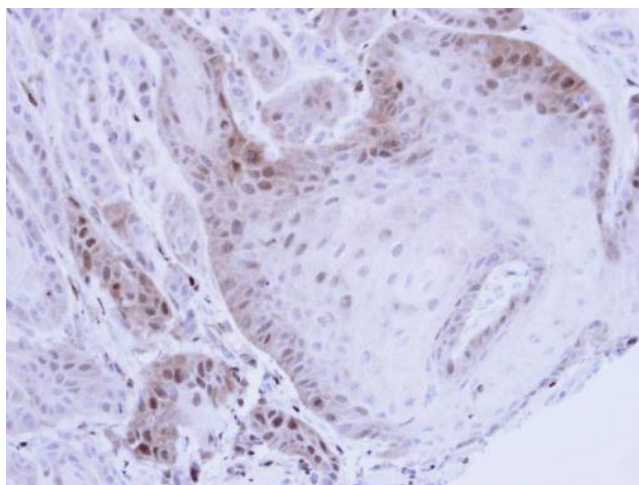
Proteasome

**Product images:**

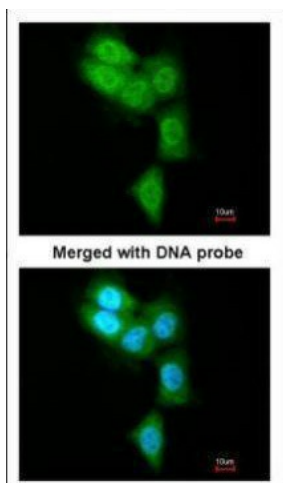
Sample (30 ug of whole cell lysate). A: Raji. 12% SDS PAGE. TA308731 diluted at 1:1000.



PSMB8 antibody [N2C3] detects PSMB8 protein at cytosol and nucleus on mouse liver by immunohistochemical analysis. Sample: Paraffin-embedded mouse liver. PSMB8 antibody [N2C3] (TA308731) dilution: 1:250.



Immunohistochemical analysis of paraffin-embedded Cal27 Xenograft, using PSMB8 (TA308731) antibody at 1:100 dilution.



Immunofluorescence analysis of paraformaldehyde-fixed A431, using PSMB8 (TA308731) antibody at 1:200 dilution.