

Product datasheet for **TA308729**

Adenosine Receptor A2a (ADORA2A) Rabbit Polyclonal Antibody

Product data:

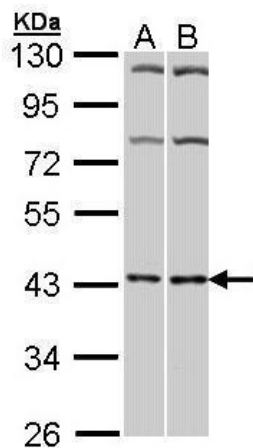
Product Type:	Primary Antibodies
Applications:	IHC, WB
Recommended Dilution:	IHC:1:100-1:1000; WB:1:500-1:3000
Reactivity:	Human
Host:	Rabbit
Isotype:	IgG
Clonality:	Polyclonal
Immunogen:	Synthetic peptide corresponding to a region within amino acids 338 and 412 of Adenosine A2a Receptor (Uniprot ID#P29274)
Formulation:	1XPBS, 20% Glycerol (pH7). 0.01% Thimerosal was added as a preservative.
Concentration:	lot specific
Purification:	Purified by antigen-affinity chromatography.
Conjugation:	Unconjugated
Storage:	Store at -20°C as received.
Stability:	Stable for 12 months from date of receipt.
Predicted Protein Size:	45 kDa
Gene Name:	adenosine A2a receptor
Database Link:	NP_000666 Entrez Gene 135 Human P29274
Background:	This gene encodes a protein which is one of several receptor subtypes for adenosine. The activity of the encoded protein, a G-protein coupled receptor family member, is mediated by G proteins which activate adenylyl cyclase. The encoded protein is abundant in basal ganglia, vasculature and platelets and it is a major target of caffeine. [provided by RefSeq]
Synonyms:	A2aR; ADORA2; RDC8
Protein Families:	Druggable Genome, GPCR, Transmembrane



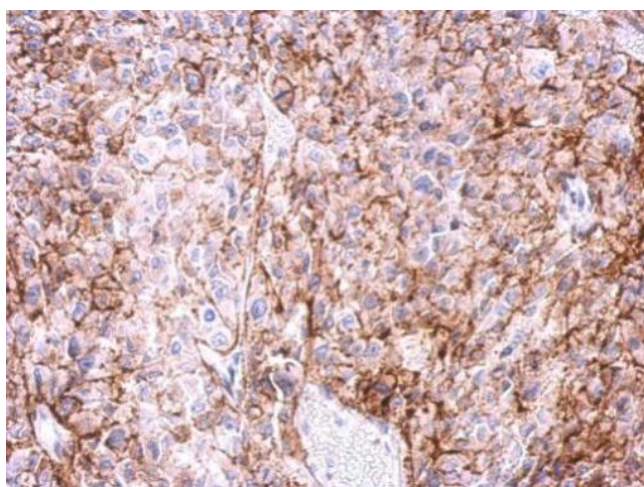
[View online »](#)

Protein Pathways: Calcium signaling pathway, Neuroactive ligand-receptor interaction, Vascular smooth muscle contraction

Product images:



Sample (30 ug of whole cell lysate). A: HeLa. B: Molt-4. 10% SDS PAGE. TA308729 diluted at 1:1000.



Immunohistochemical analysis of paraffin-embedded Ca922 xenograft, using Adenosine A2a Receptor (TA308729) antibody at 1:500 dilution.