

Product datasheet for **TA308728**

Syntrophin alpha 1 (SNTA1) Rabbit Polyclonal Antibody

Product data:

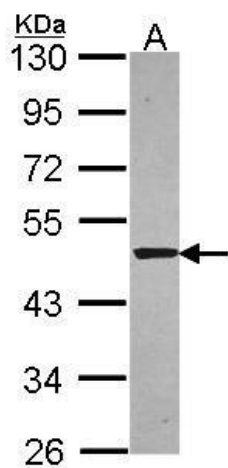
Product Type:	Primary Antibodies
Applications:	IF, WB
Recommended Dilution:	ICC/IF:1:100-1:1000; WB:1:1000-1:10000
Reactivity:	Human (Predicted: Mouse, Rabbit, Rat, Bovine)
Host:	Rabbit
Isotype:	IgG
Clonality:	Polyclonal
Immunogen:	Recombinant fragment corresponding to a region within amino acids 191 and 505 of alpha Syntrophin (Uniprot ID#Q13424)
Formulation:	0.1M Tris, 0.1M Glycine, 20% Glycerol (pH7). 0.01% Thimerosal was added as a preservative.
Concentration:	lot specific
Purification:	Purified by antigen-affinity chromatography.
Conjugation:	Unconjugated
Storage:	Store at -20°C as received.
Stability:	Stable for 12 months from date of receipt.
Predicted Protein Size:	54 kDa
Gene Name:	syntrophin alpha 1
Database Link:	NP_003089 Entrez Gene 20648 MouseEntrez Gene 362242 RatEntrez Gene 6640 Human Q13424
Background:	Dystrophin is a large, rod-like cytoskeletal protein found at the inner surface of muscle fibers. Dystrophin is missing in Duchenne Muscular Dystrophy patients and is present in reduced amounts in Becker Muscular Dystrophy patients. The protein encoded by this gene is a peripheral membrane protein found associated with dystrophin and dystrophin-related proteins. This gene is a member of the syntrophin gene family, which contains at least two other structurally-related genes. [provided by RefSeq]
Synonyms:	dj1187J4.5; LQT12; SNT1; TACIP1



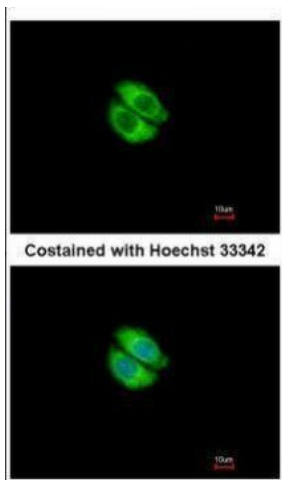
[View online »](#)

Note: Seq homology of immunogen across species: Mouse (92%), Rabbit (94%), Rat (94%), Bovine (95%)

Product images:



Sample (30 ug of whole cell lysate). A: A549. 10% SDS PAGE. TA308728 diluted at 1:5000.



Immunofluorescence analysis of methanol-fixed A549, using Syntrophin alpha 1 (TA308728) antibody at 1:500 dilution.