

Product datasheet for **TA308727**

KPNA2 Rabbit Polyclonal Antibody

Product data:

Product Type:	Primary Antibodies
Applications:	IF, WB
Recommended Dilution:	ICC/IF:1:100-1:1000; WB:1:500-1:3000
Reactivity:	Human (Predicted: Rat, Chimpanzee, Rhesus Monkey, Mouse)
Host:	Rabbit
Isotype:	IgG
Clonality:	Polyclonal
Immunogen:	Synthetic peptide corresponding to a region within amino acids 468 and 529 of KPNA2 (Uniprot ID#P52292)
Formulation:	0.1M Tris, 0.1M Glycine, 10% Glycerol (pH7). 0.01% Thimerosal was added as a preservative.
Concentration:	lot specific
Purification:	Purified by antigen-affinity chromatography.
Conjugation:	Unconjugated
Storage:	Store at -20°C as received.
Stability:	Stable for 12 months from date of receipt.
Predicted Protein Size:	58 kDa
Gene Name:	karyopherin subunit alpha 2
Database Link:	NP_002257 Entrez Gene 16647 Mouse Entrez Gene 85245 Rat Entrez Gene 3838 Human P52292



[View online »](#)

Background:

The import of proteins into the nucleus is a process that involves at least 2 steps. The first is an energy-independent docking of the protein to the nuclear envelope and the second is an energy-dependent translocation through the nuclear pore complex. Imported proteins require a nuclear localization sequence (NLS) which generally consists of a short region of basic amino acids or 2 such regions spaced about 10 amino acids apart. Proteins involved in the first step of nuclear import have been identified in different systems. These include the *Xenopus* protein importin and its yeast homolog, SRP1 (a suppressor of certain temperature-sensitive mutations of RNA polymerase I in *Saccharomyces cerevisiae*), which bind to the NLS. KPNA2 protein interacts with the NLSs of DNA helicase Q1 and SV40 T antigen and may be involved in the nuclear transport of proteins. KPNA2 also may play a role in V(D)J recombination [provided by RefSeq]

Synonyms:

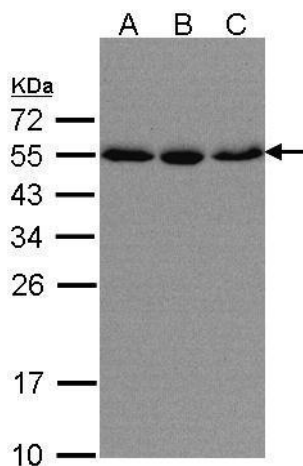
IPOA1; QIP2; RCH1; SRP1-alpha; SRP1alpha

Note:

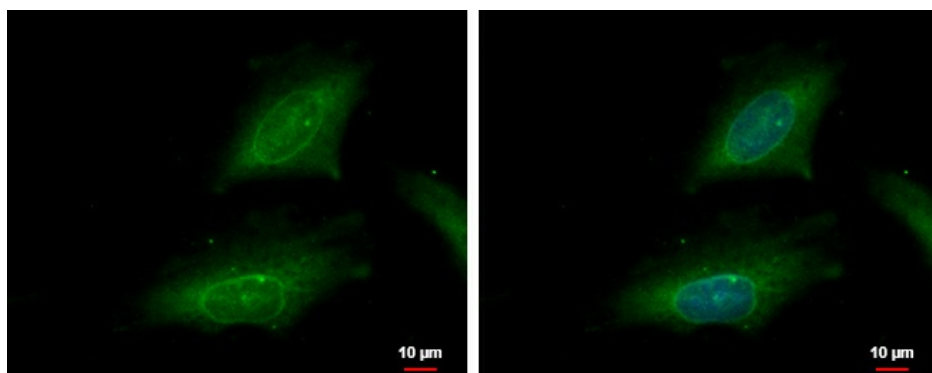
Seq homology of immunogen across species: Mouse (100%), Rat (100%), Rhesus Monkey (92%), Chimpanzee (100%)

Protein Families:

Druggable Genome, Stem cell - Pluripotency

Product images:

Sample (30 ug of whole cell lysate). A:HeLa S3. B:Hep G2. C:MOLT4. 10% SDS PAGE. TA308727 diluted at 1:500



karyopherin alpha 2 antibody [C3], C-term detects karyopherin alpha 2 protein at cytoplasm and nucleus by immunofluorescent analysis. Sample: HeLa cells were fixed in ice-cold MeOH for 5 min. Green: karyopherin alpha 2 protein stained by karyopherin alpha