

## Product datasheet for **TA308726**

### KPNA4 Rabbit Polyclonal Antibody

#### Product data:

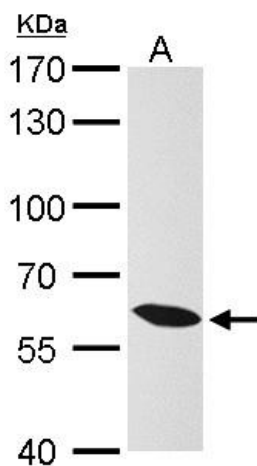
Product Type:	Primary Antibodies
Applications:	IF, IHC, WB
Recommended Dilution:	WB:1:500-1:3000
Reactivity:	Human (Predicted: Xenopus, Chicken, Bovine)
Host:	Rabbit
Isotype:	IgG
Clonality:	Polyclonal
Immunogen:	Synthetic peptide corresponding to a region within amino acids 459 and 521 of KPNA4 (Uniprot ID#O00629)
Formulation:	1XPBS, 1% BSA, 20% Glycerol (pH7). 0.01% Thimerosal was added as a preservative.
Concentration:	lot specific
Purification:	Purified by antigen-affinity chromatography.
Conjugation:	Unconjugated
Storage:	Store at -20°C as received.
Stability:	Stable for 12 months from date of receipt.
Predicted Protein Size:	58 kDa
Gene Name:	karyopherin subunit alpha 4
Database Link:	<a href="#">NP_002259</a> <a href="#">Entrez Gene 3840 Human</a> <a href="#">O00629</a>
Background:	The nuclear import of karyophilic proteins is directed by short amino acid sequences termed nuclear localization signals (NLSs). Karyopherins, or importins, are cytoplasmic proteins that recognize NLSs and dock NLS-containing proteins to the nuclear pore complex. The protein encoded by this gene shares the sequence similarity with Xenopus importin-alpha and Saccharomyces cerevisiae Srp1. This protein is found to interact with the NLSs of DNA helicase Q1 and SV40 T antigen. [provided by RefSeq]
Synonyms:	IPOA3; QIP1; SRP3



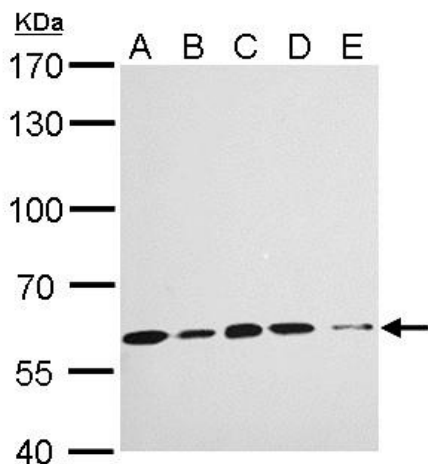
[View online »](#)

**Note:** Seq homology of immunogen across species: Xenopus laevis (92%), Chicken (92%), Bovine (100%)

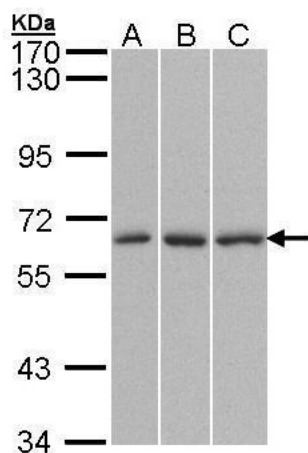
**Product images:**



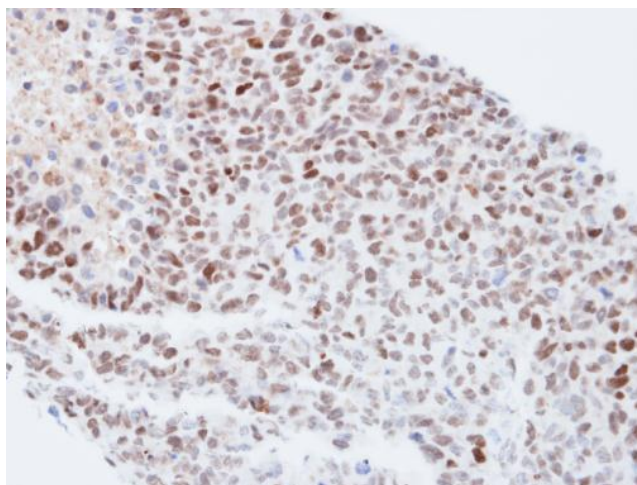
KPNA4 antibody [C3], C-term detects KPNA4 protein by Western blot analysis. A. 30 ug Rat2 whole cell lysate/extract. 7.5 % SDS-PAGE. KPNA4 antibody [C3], C-term (TA308726) dilution: 1:1000



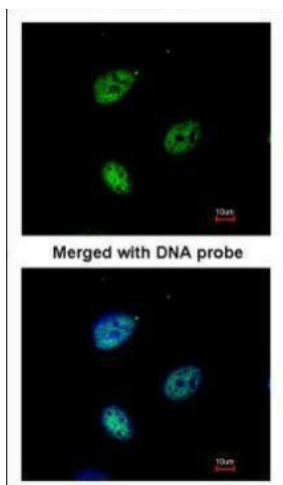
KPNA4 antibody [C3], C-term detects KPNA4 protein by Western blot analysis. A. 30 ug Neuro2A whole cell lysate/extract. B. 30 ug GL261 whole cell lysate/extract. C. 30 ug C8D30 whole cell lysate/extract. D. 30 ug NIH-3T3 whole cell lysate/extract. E. 30 u



Sample (30 ug of whole cell lysate). A: 293T. B: HepG2. C: Molt-4. 7.5% SDS PAGE. TA308726 diluted at 1:1500.



Immunohistochemical analysis of paraffin-embedded H1299 xenograft, using KPNA4 (TA308726) antibody at 1:500 dilution.



Immunofluorescence analysis of paraformaldehyde-fixed HeLa, using QIP1 (TA308726) antibody at 1:200 dilution.