

Product datasheet for **TA308724**

Protein Kinase D2 (PRKD2) Rabbit Polyclonal Antibody

Product data:

Product Type:	Primary Antibodies
Applications:	IF, IHC, WB
Recommended Dilution:	ICC/IF:1:100-1:1000; IHC:1:100-1:1000; WB:1:500-1:3000
Reactivity:	Human
Host:	Rabbit
Isotype:	IgG
Clonality:	Polyclonal
Immunogen:	Recombinant fragment corresponding to a region within amino acids 529 and 862 of PKD2 (Uniprot ID#Q9BZL6)
Formulation:	0.1M Tris, 0.1M Glycine, 10% Glycerol (pH7). 0.01% Thimerosal was added as a preservative.
Concentration:	lot specific
Purification:	Purified by antigen-affinity chromatography.
Conjugation:	Unconjugated
Storage:	Store at -20°C as received.
Stability:	Stable for 12 months from date of receipt.
Predicted Protein Size:	97 kDa
Gene Name:	protein kinase D2
Database Link:	NP_001073351 Entrez Gene 25865 Human Q9BZL6
Background:	The protein encoded by this gene belongs to the protein kinase D (PKD) family of serine/threonine protein kinases. This kinase can be activated by phorbol esters as well as by gastrin via the cholecystokinin B receptor (CCKBR) in gastric cancer cells. It can bind to diacylglycerol (DAG) in the trans-Golgi network (TGN) and may regulate basolateral membrane protein exit from TGN. Alternative splicing results in multiple transcript variants encoding different isoforms. [provided by RefSeq]
Synonyms:	HSPC187; nPKC-D2; PKD2

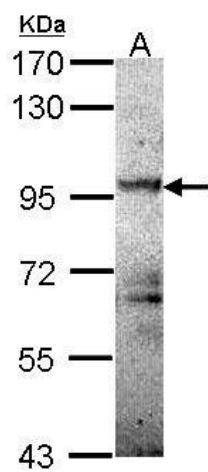


[View online »](#)

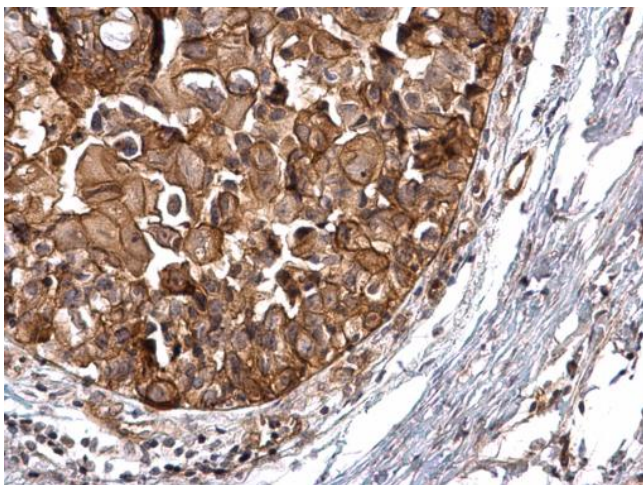
Note: Seq homology of immunogen across species: Mouse (100%)

Protein Families: Druggable Genome, Protein Kinase

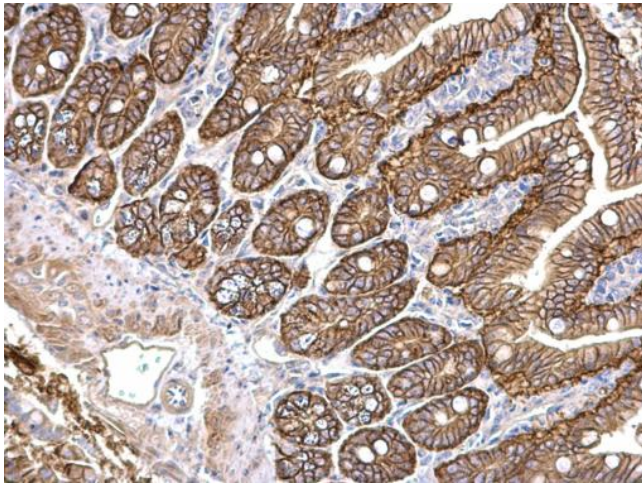
Product images:



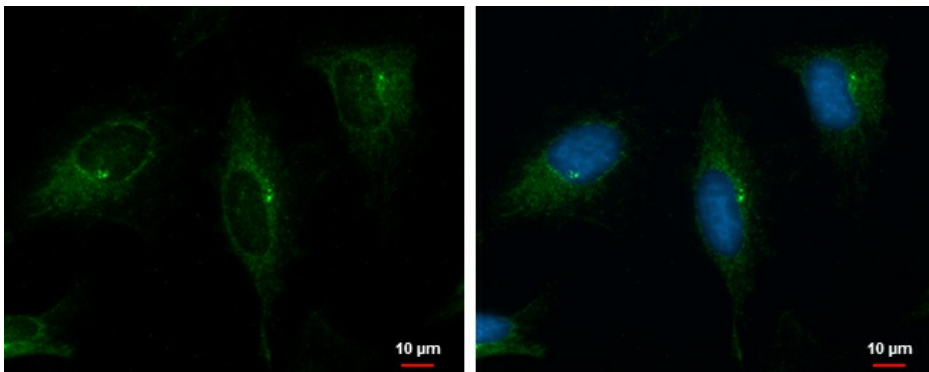
Sample (30 ug of whole cell lysate). A: Molt-4. 7.5% SDS PAGE. TA308724 diluted at 1:1000.



PKD2 antibody [C1C3] detects PKD2 protein at cytosol and membrane on human breast carcinoma by immunohistochemical analysis. Sample: Paraffin-embedded human breast carcinoma. PKD2 antibody [C1C3] (TA308724) dilution: 1:500.



PKD2 antibody [C1C3] detects PKD2 protein at cytosol and membrane on mouse intestine by immunohistochemical analysis. Sample: Paraffin-embedded mouse intestine. PKD2 antibody [C1C3] (TA308724) dilution: 1:500.



PKD2 antibody [C1C3] detects PKD2 protein at cytoplasm by immunofluorescent analysis. Sample: HeLa cells were fixed in ice-cold MeOH for 5 min. Green: PKD2 protein stained by PKD2 antibody [C1C3] (TA308724) diluted at 1:200. Blue: Hoechst 33342 staining.