

Product datasheet for **TA308723**

Calretinin (CALB2) Rabbit Polyclonal Antibody

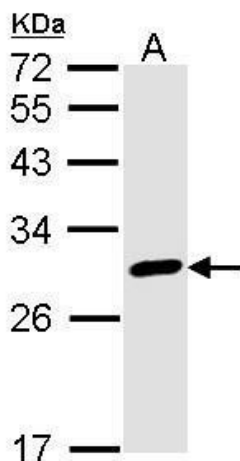
Product data:

Product Type:	Primary Antibodies
Applications:	IF, IHC, WB
Recommended Dilution:	ICC/IF:1:100-1:1000; IHC:1:100-1:1000; WB:1:500-1:3000
Reactivity:	Human (Predicted: Chicken, Pig, Rat, Bovine)
Host:	Rabbit
Isotype:	IgG
Clonality:	Polyclonal
Immunogen:	Recombinant fragment corresponding to a region within amino acids 1 and 271 of Calretinin (Uniprot ID#P22676)
Formulation:	0.1M Tris, 0.1M Glycine, 10% Glycerol (pH7). 0.01% Thimerosal was added as a preservative.
Concentration:	lot specific
Purification:	Purified by antigen-affinity chromatography.
Conjugation:	Unconjugated
Storage:	Store at -20°C as received.
Stability:	Stable for 12 months from date of receipt.
Predicted Protein Size:	32 kDa
Gene Name:	calbindin 2
Database Link:	NP_009019 Entrez Gene 117059 Rat Entrez Gene 794 Human P22676
Background:	This gene encodes an intracellular calcium-binding protein belonging to the troponin C superfamily. Members of this protein family have six EF-hand domains which bind calcium. Three alternatively spliced transcript variants that encode different proteins have been described. [provided by RefSeq]
Synonyms:	CAB29; CAL2; CR
Note:	Seq homology of immunogen across species: Chicken (89%), Pig (96%), Rat (98%), Bovine (97%)

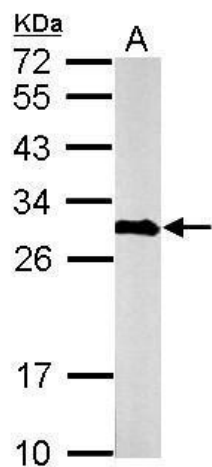


[View online »](#)

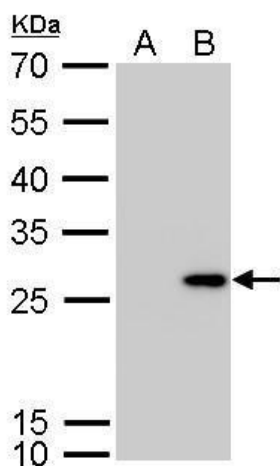
Product images:



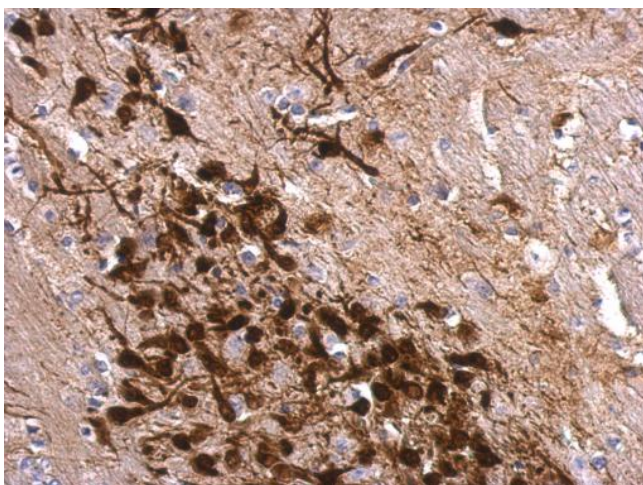
Sample (30 ug of whole cell lysate). A: A431. 12% SDS PAGE. Calretinin antibody. TA308723 diluted at 1:1000.



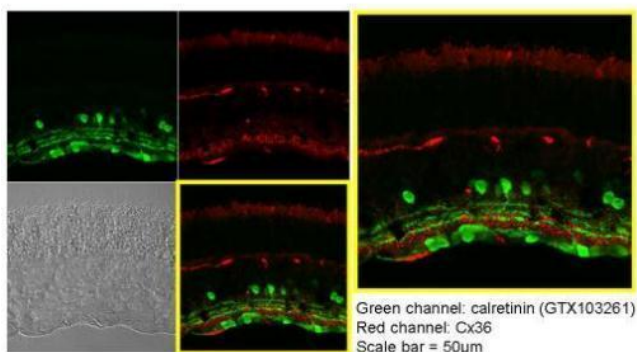
Sample (50 ug of whole cell lysate). A: mouse brain. 12% SDS PAGE. TA308723 diluted at 1:1000.



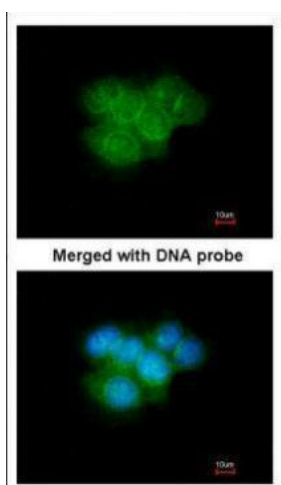
Calretinin antibody detects CALB2 protein by Western blot analysis. A. 30 ug 293T whole cell lysate/extract. B. 30 ug whole cell lysate/extract of human CALB2-transfected 293T cells. 12 % SDS-PAGE. Calretinin antibody (TA308723) dilution: 1:5000



Calretinin antibody detects Calretinin protein at cytosol on mouse fore brain by immunohistochemical analysis. Sample: Paraffin-embedded mouse fore brain. Calretinin antibody (TA308723) dilution: 1:500.



Immunohistochemical analysis of paraffin-embedded Mouse retina, using Calretinin (TA308723) antibody at 1:250 dilution.



Immunofluorescence analysis of paraformaldehyde-fixed A431, using Calretinin (TA308723) antibody at 1:200 dilution.