

Product datasheet for **TA308722**

Creatine kinase B type (CKB) Rabbit Polyclonal Antibody

Product data:

Product Type:	Primary Antibodies
Applications:	IF, IHC, WB
Recommended Dilution:	ICC/IF:1:100-1:1000; IHC:1:100-1:1000; WB:1:500-1:10000
Reactivity:	Human, Mouse (Predicted: Bovine, Chicken, Pig, Rabbit, Xenopus, X. tropicalis)
Host:	Rabbit
Isotype:	IgG
Clonality:	Polyclonal
Immunogen:	Recombinant fragment corresponding to a region within amino acids 165 and 381 of Creatine kinase (brain) (Uniprot ID#P12277)
Formulation:	0.1M Tris, 0.1M Glycine, 10% Glycerol (pH7). 0.01% Thimerosal was added as a preservative.
Concentration:	lot specific
Purification:	Purified by antigen-affinity chromatography.
Conjugation:	Unconjugated
Storage:	Store at -20°C as received.
Stability:	Stable for 12 months from date of receipt.
Predicted Protein Size:	43 kDa
Gene Name:	creatine kinase B
Database Link:	NP_001814 Entrez Gene 12709 Mouse Entrez Gene 1152 Human P12277
Background:	The protein encoded by this gene is a cytoplasmic enzyme involved in energy homeostasis. The encoded protein reversibly catalyzes the transfer of phosphate between ATP and various phosphogens such as creatine phosphate. It acts as a homodimer in brain as well as in other tissues, and as a heterodimer with a similar muscle isozyme in heart. The encoded protein is a member of the ATP:guanido phosphotransferase protein family. A pseudogene of this gene has been characterized. [provided by RefSeq]
Synonyms:	B-CK; BCK; CKBB; HEL-211; HEL-S-29



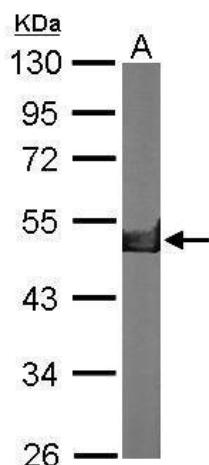
[View online »](#)

Note: Seq homology of immunogen across species: Chicken (97%), Pig (96%), Rabbit (96%), Xenopus laevis (88%), Bovine (96%), Xenopus tropicalis (88%)

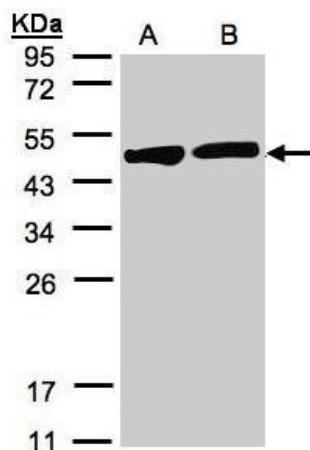
Protein Families: Druggable Genome

Protein Pathways: Arginine and proline metabolism, Metabolic pathways

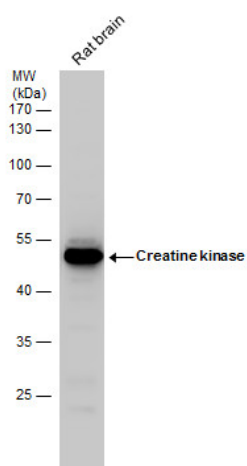
Product images:



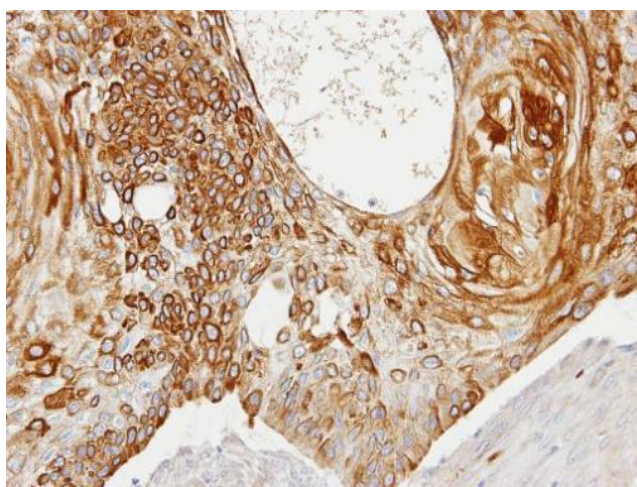
Sample (50 ug of whole cell lysate). A: Mouse brain. 10% SDS PAGE. TA308722 diluted at 1:10000.



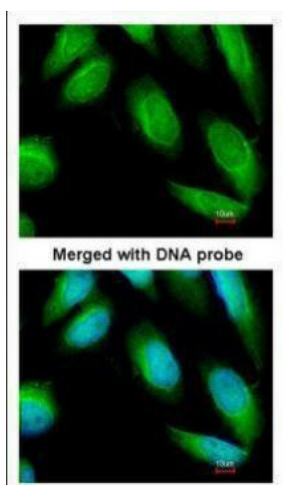
Sample (30 ug of whole cell lysate). A:H1299. B:HeLa S3. 12% SDS PAGE. TA308722 diluted at 1:1000



Creatine kinase (brain) antibody detects Creatine kinase protein by western blot analysis. Rat tissue extracts (50 ug) was separated by 10 % SDS-PAGE, and blotted with Creatine kinase (brain) antibody (TA308722) diluted by 1:1000



Immunohistochemical analysis of paraffin-embedded HSC3 xenograft, using Creatine kinase (brain) (TA308722) antibody at 1:100 dilution.



Immunofluorescence analysis of paraformaldehyde-fixed HeLa, using Creatine Kinase BB (TA308722) antibody at 1:100 dilution.