

Product datasheet for **TA308721**

VPS35 Rabbit Polyclonal Antibody

Product data:

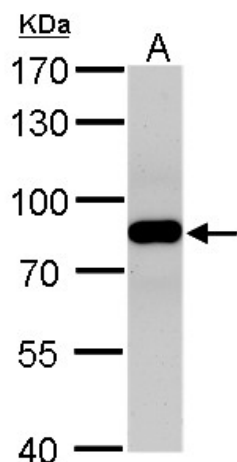
Product Type:	Primary Antibodies
Applications:	IF, IHC, WB
Recommended Dilution:	ICC/IF:1:100-1:1000; IHC:1:100-1:1000; WB:1:500-1:3000
Reactivity:	Human, Mouse (Predicted: Zebrafish, Chicken, Bovine)
Host:	Rabbit
Isotype:	IgG
Clonality:	Polyclonal
Immunogen:	Synthetic peptide corresponding to a region within amino acids 733 and 796 of VPS35 (Uniprot ID#Q96QK1)
Formulation:	1XPBS, 20% Glycerol (pH7). 0.025% ProClin 300 was added as a preservative.
Concentration:	lot specific
Purification:	Purified by antigen-affinity chromatography.
Conjugation:	Unconjugated
Storage:	Store at -20°C as received.
Stability:	Stable for 12 months from date of receipt.
Predicted Protein Size:	92 kDa
Gene Name:	VPS35 retromer complex component
Database Link:	NP_060676 Entrez Gene 65114 Mouse Entrez Gene 55737 Human Q96QK1
Background:	This gene belongs to a group of vacuolar protein sorting (VPS) genes. The encoded protein is a component of a large multimeric complex, termed the retromer complex, involved in retrograde transport of proteins from endosomes to the trans-Golgi network. The close structural similarity between the yeast and human proteins that make up this complex suggests a similarity in function. Expression studies in yeast and mammalian cells indicate that this protein interacts directly with VPS35, which serves as the core of the retromer complex. [provided by RefSeq]
Synonyms:	MEM3; PARK17



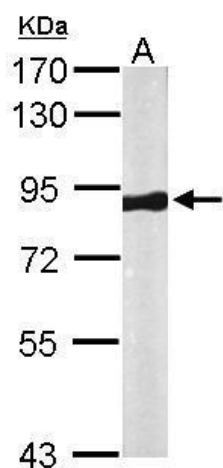
[View online »](#)

Note: Seq homology of immunogen across species: Zebrafish (86%), Chicken (93%), Bovine (100%)

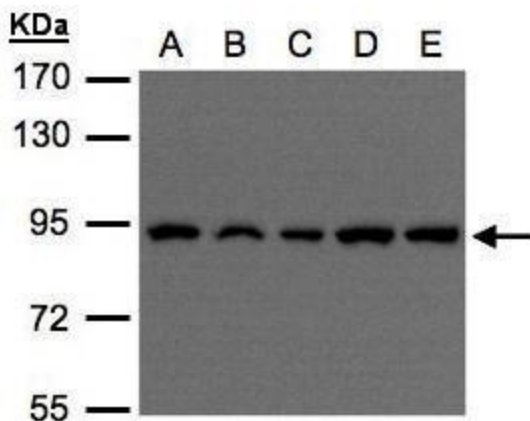
Product images:



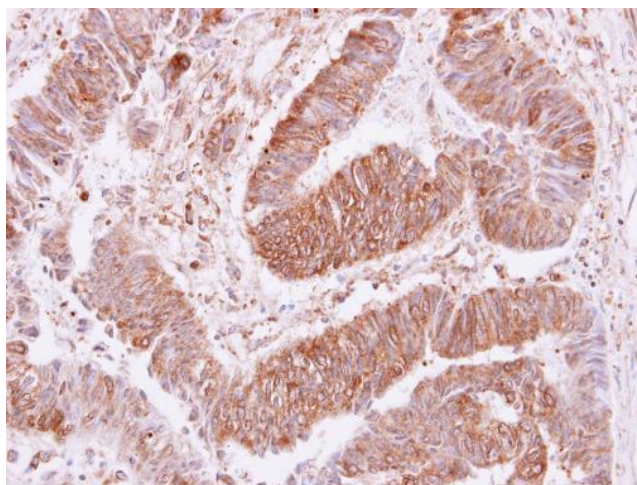
VPS35 antibody detects VPS35 protein by Western blot analysis. A. 50 ug rat brain lysate/extract. 7.5 % SDS-PAGE. VPS35 antibody (TA308721) dilution: 1:500



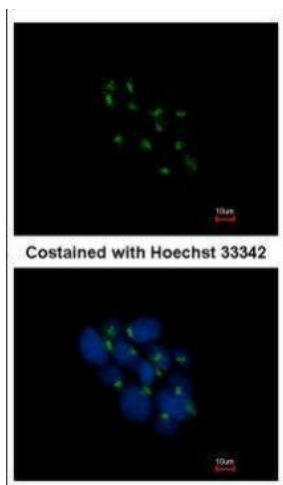
Sample (50 ug of whole cell lysate). A: Mouse brain. 7.5% SDS PAGE. TA308721 diluted at 1:1000.



Sample (30 ug of whole cell lysate). A:H1299. B:HeLa S3. C:Hep G2. D:MOLT4. E:Raji. 7.5% SDS PAGE. TA308721 diluted at 1:500



VPS35 antibody [C3], C-term detects VPS35 protein at cytoplasm and membrane on colon carcinoma by immunohistochemical analysis. Sample: Paraffin-embedded colon carcinoma. VPS35 antibody [C3], C-term (TA308721) dilution: 1:250.



Immunofluorescence analysis of methanol-fixed HCT116, using VPS35 (TA308721) antibody at 1:500 dilution.