

## Product datasheet for **TA308720**

### FASTK Rabbit Polyclonal Antibody

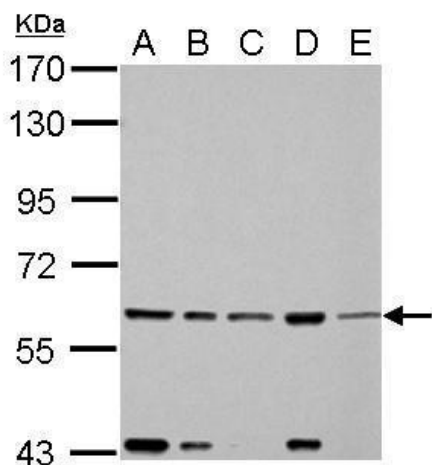
#### Product data:

Product Type:	Primary Antibodies
Applications:	IF, IHC, WB
Recommended Dilution:	ICC/IF:1:100-1:1000; IHC:1:100-1:1000; WB:1:500-1:3000
Reactivity:	Human, Mouse
Host:	Rabbit
Isotype:	IgG
Clonality:	Polyclonal
Immunogen:	Recombinant fragment corresponding to a region within amino acids 346 and 549 of FAST (Uniprot ID#Q14296)
Formulation:	0.1M Tris, 0.1M Glycine, 10% Glycerol (pH7). 0.01% Thimerosal was added as a preservative.
Purification:	Affinity purified by Protein A.
Conjugation:	Unconjugated
Storage:	Store at -20°C as received.
Stability:	Stable for 12 months from date of receipt.
Predicted Protein Size:	61 kDa
Gene Name:	Fas activated serine/threonine kinase
Database Link:	<a href="#">NP_006703</a> <a href="#">Entrez Gene 66587 Mouse</a> <a href="#">Entrez Gene 10922 Human</a> <a href="#">Q14296</a>
Background:	The protein encoded by this gene is a member of the serine/threonine protein kinase family. This kinase was shown to be activated rapidly during Fas-mediated apoptosis in Jurkat cells. In response to Fas receptor ligation, it phosphorylates TIA1, an apoptosis-promoting nuclear RNA-binding protein. The encoded protein is a strong inducer of lymphocyte apoptosis. Two transcript variants encoding different isoforms have been found for this gene. Other variants exist, but their full-length natures have not yet been determined. [provided by RefSeq]
Synonyms:	FAST
Protein Families:	Druggable Genome, Protein Kinase

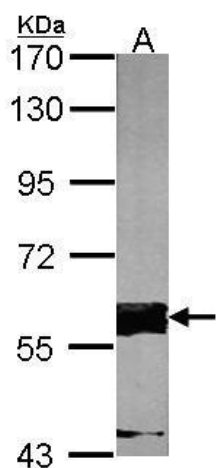


[View online »](#)

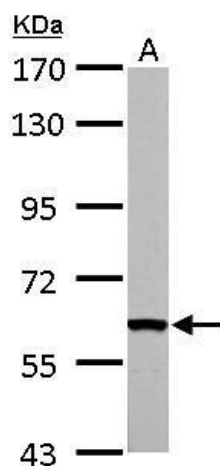
Product images:



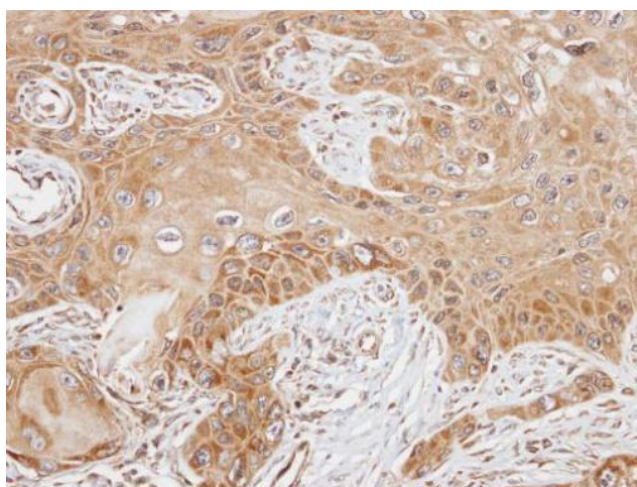
FAST antibody detects FASTK protein by Western blot analysis. A. 30 ug 293T whole cell lysate/extract. B. 30 ug A431 whole cell lysate/extract. C. 30 ug HeLa whole cell lysate/extract. D. 30 ug HepG2 whole cell lysate/extract. E. 30 ug A375 whole cell lys



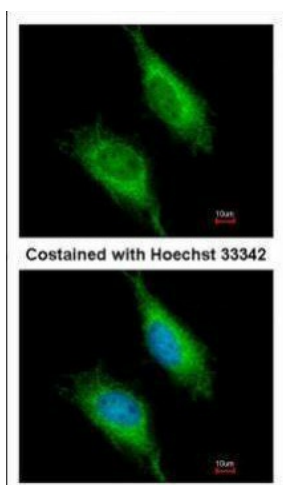
Sample (30 ug of whole cell lysate). A:NIH-3T3. 7.5% SDS PAGE. TA308720 diluted at 1:1000.



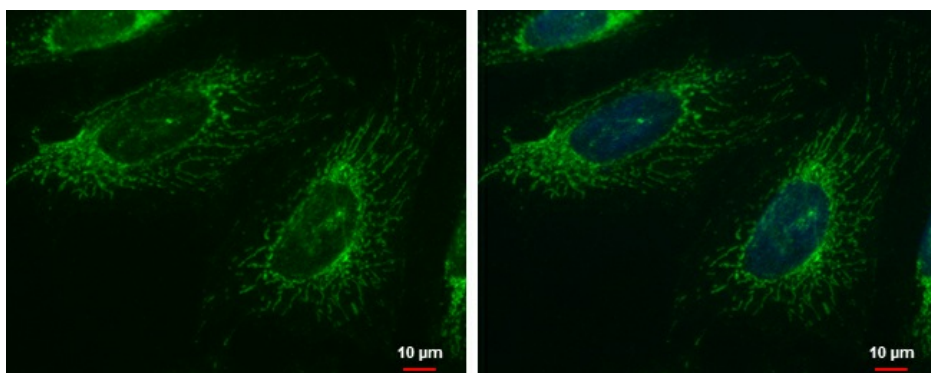
FAST antibody detects FASTK protein by Western blot analysis. A. 30 ug PC-12 whole cell lysate/extract. 7.5 % SDS-PAGE. FAST antibody (TA308720) dilution: 1:1000



Immunohistochemical analysis of paraffin-embedded SCC15 xenograft, using FAST (TA308720) antibody at 1:100 dilution.



Immunofluorescence analysis of methanol-fixed HeLa, using FAST (TA308720) antibody at 1:200 dilution.



FAST antibody detects FAST protein at mitochondria by immunofluorescent analysis. Sample: HeLa cells were fixed in ice-cold MeOH for 5 min. Green: FAST protein stained by FAST antibody (TA308720) diluted at 1:1000. Blue: Hoechst 33342 staining. Scale bar