

Product datasheet for **TA308717**

cGKI (PRKG1) Rabbit Polyclonal Antibody

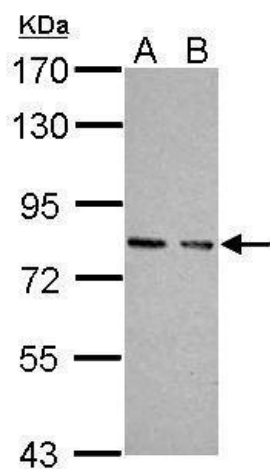
Product data:

Product Type:	Primary Antibodies
Applications:	WB
Recommended Dilution:	WB:1:5000-1:20000
Reactivity:	Human (Predicted: Bovine)
Host:	Rabbit
Isotype:	IgG
Clonality:	Polyclonal
Immunogen:	Recombinant fragment corresponding to a region within amino acids 1 and 300 of cGKI
Formulation:	0.1M Tris, 0.1M Glycine, 10% Glycerol (pH7). 0.01% Thimerosal was added as a preservative.
Concentration:	lot specific
Purification:	Purified by antigen-affinity chromatography.
Conjugation:	Unconjugated
Storage:	Store at -20°C as received.
Stability:	Stable for 12 months from date of receipt.
Predicted Protein Size:	76 kDa
Gene Name:	protein kinase, cGMP-dependent, type I
Database Link:	NP_001091982 Entrez Gene 5592 Human Q13976
Synonyms:	1; AAT8; cGK; cGK 1; cGK1; cGKI; cGKI-alpha; cGKI-BETA; PKG; PRKG1B; PRKGR1B
Note:	Seq homology of immunogen across species: Human (100%), Bovine (100%)
Protein Families:	Druggable Genome, Protein Kinase
Protein Pathways:	Gap junction, Long-term depression, Olfactory transduction, Vascular smooth muscle contraction



[View online »](#)

Product images:



Sample (30 ug of whole cell lysate). A: JC. B: BCL-1. 7.5% SDS PAGE. TA308717 diluted at 1:10000.