

Product datasheet for **TA308716**

RPA70 (RPA1) Rabbit Polyclonal Antibody

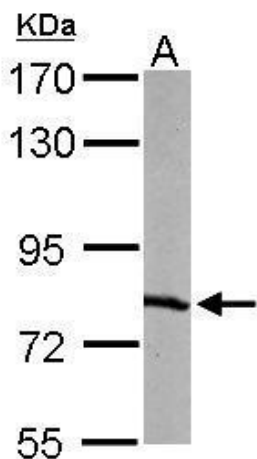
Product data:

Product Type:	Primary Antibodies
Applications:	IF, IHC, WB
Recommended Dilution:	ICC/IF:1:100-1:1000; IHC:1:100-1:1000; WB:1:500-1:3000
Reactivity:	Human, Mouse (Predicted: Bovine)
Host:	Rabbit
Isotype:	IgG
Clonality:	Polyclonal
Immunogen:	Recombinant fragment corresponding to a region within amino acids 369 and 616 of RPA70 (Uniprot ID#P27694)
Formulation:	1XPBS, 20% Glycerol (pH7). 0.025% ProClin 300 was added as a preservative.
Purification:	Purified by antigen-affinity chromatography.
Conjugation:	Unconjugated
Storage:	Store at -20°C as received.
Stability:	Stable for 12 months from date of receipt.
Predicted Protein Size:	68 kDa
Gene Name:	replication protein A1
Database Link:	NP_002936 Entrez Gene 68275 Mouse Entrez Gene 6117 Human P27694
Synonyms:	HSSB; MST075; REPA1; RF-A; RP-A; RPA70
Note:	Seq homology of immunogen across species: Bovine (93%)
Protein Families:	Druggable Genome, Stem cell - Pluripotency
Protein Pathways:	DNA replication, Homologous recombination, Mismatch repair, Nucleotide excision repair

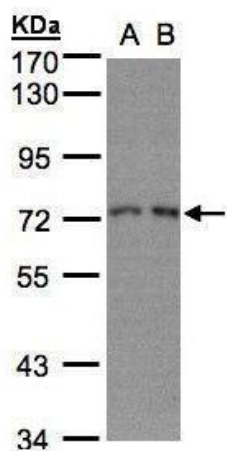


[View online »](#)

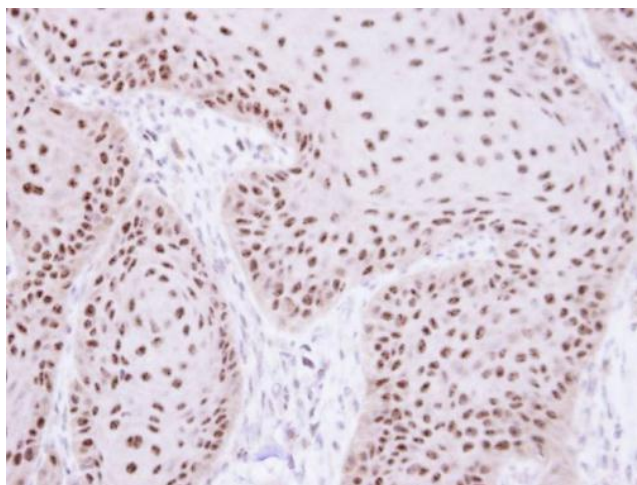
Product images:



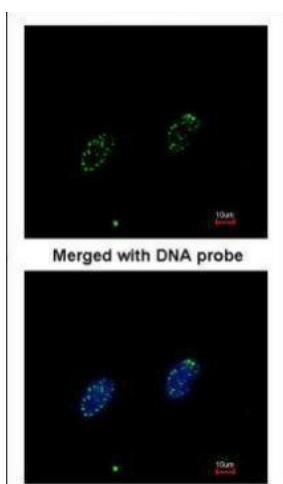
Sample (50 ug of whole cell lysate). A: mouse liver. 7.5% SDS PAGE. TA308716 diluted at 1:1000.



Sample (30 ug whole cell lysate). A:H1299. B:HeLa S3. 7.5% SDS PAGE. TA308716 diluted at 1:1000



Immunohistochemical analysis of paraffin-embedded Cal27 xenograft, using RPA 70 kDa subunit (TA308716) antibody at 1:100 dilution.



Immunofluorescence analysis of paraformaldehyde-fixed HeLa, using RPA 70 kDa subunit (TA308716) antibody at 1:200 dilution.