

Product datasheet for **TA308715**

14-3-3 beta (YWHAB) Rabbit Polyclonal Antibody

Product data:

Product Type:	Primary Antibodies
Applications:	IF, IHC, WB
Recommended Dilution:	ICC/IF:1:100-1:1000; IHC:1:100-1:1000; WB:1:5000-1:20000
Reactivity:	Human (Predicted: Bovine, Rhesus Monkey)
Host:	Rabbit
Isotype:	IgG
Clonality:	Polyclonal
Immunogen:	Recombinant fragment corresponding to a region within amino acids 1 and 171 of 14-3-3 beta (Uniprot ID#P31946)
Formulation:	0.1M Tris, 0.1M Glycine, 10% Glycerol (pH7). 0.01% Thimerosal was added as a preservative.
Purification:	Purified by antigen-affinity chromatography.
Conjugation:	Unconjugated
Storage:	Store at -20°C as received.
Stability:	Stable for 12 months from date of receipt.
Predicted Protein Size:	28 kDa
Gene Name:	tyrosine 3-monooxygenase/tryptophan 5-monooxygenase activation protein beta
Database Link:	NP_003395 Entrez Gene 7529 Human P31946
Background:	This gene encodes a protein belonging to the 14-3-3 family of proteins, members of which mediate signal transduction by binding to phosphoserine-containing proteins. This highly conserved protein family is found in both plants and mammals. The encoded protein has been shown to interact with RAF1 and CDC25 phosphatases, suggesting that it may play a role in linking mitogenic signaling and the cell cycle machinery. Two transcript variants, which encode the same protein, have been identified for this gene. [provided by RefSeq]
Synonyms:	GW128; HEL-S-1; HS1; KCIP-1; YWHAA
Note:	Seq homology of immunogen across species: Rhesus Monkey (100%), Bovine (100%)

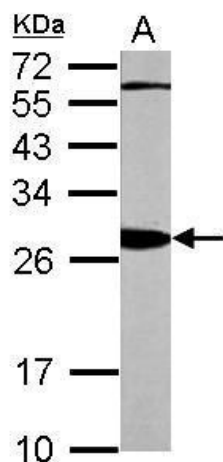


[View online »](#)

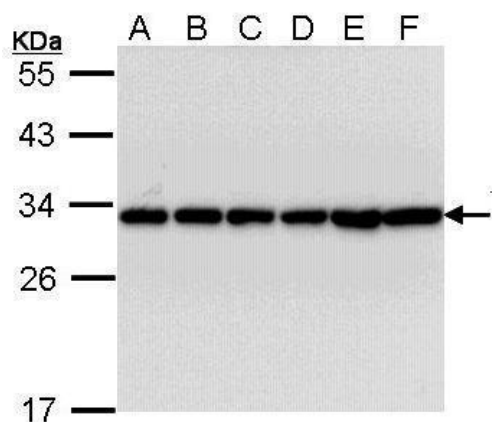
Protein Families: Druggable Genome

Protein Pathways: Cell cycle, Neurotrophin signaling pathway, Oocyte meiosis

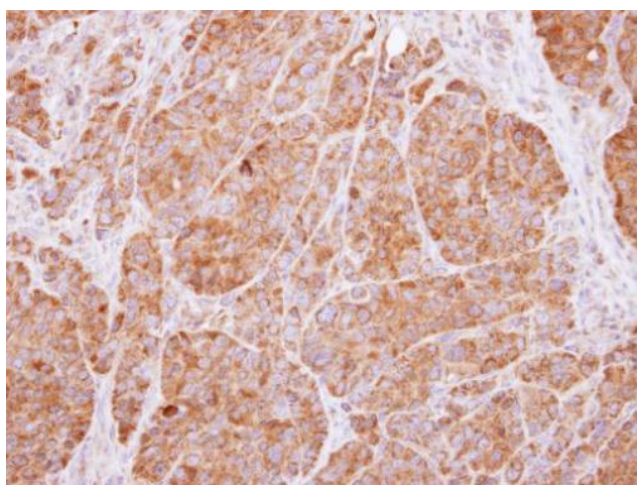
Product images:



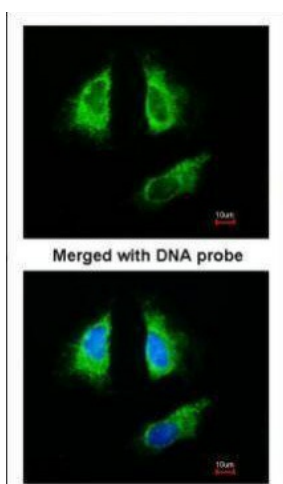
Sample (20 ug of whole cell lysate). A: mouse brain. 12% SDS PAGE. TA308715 diluted at 1:10000.



Sample (30 ug of whole cell lysate). A: A431. B: H1299. C: Hela. D: Hep G2. E: Molt-4. F: Raji. 12% SDS PAGE. TA308715 diluted at 1:10000.



Immunohistochemical analysis of paraffin-embedded SW480 xenograft, using 14-3-3 beta (TA308715) antibody at 1:500 dilution.



Immunofluorescence analysis of paraformaldehyde-fixed HeLa, using 14-3-3 beta (TA308715) antibody at 1:200 dilution.