

## Product datasheet for **TA308713**

### GPR4 Rabbit Polyclonal Antibody

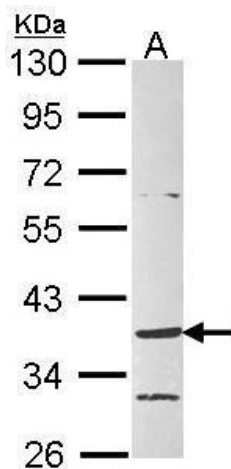
#### Product data:

Product Type:	Primary Antibodies
Applications:	WB
Recommended Dilution:	WB:1:500-1:3000
Reactivity:	Human (Predicted: Mouse, Rat, Pig, Chimpanzee, Bovine)
Host:	Rabbit
Isotype:	IgG
Clonality:	Polyclonal
Immunogen:	Synthetic peptide corresponding to a region within amino acids 159 and 254 of GPR4 (Uniprot ID#P46093)
Formulation:	0.1M Tris, 0.1M Glycine, 10% Glycerol (pH7). 0.01% Thimerosal was added as a preservative.
Concentration:	lot specific
Purification:	Purified by antigen-affinity chromatography.
Conjugation:	Unconjugated
Storage:	Store at -20°C as received.
Stability:	Stable for 12 months from date of receipt.
Predicted Protein Size:	41 kDa
Gene Name:	G protein-coupled receptor 4
Database Link:	<a href="#">NP_005273</a> <a href="#">Entrez Gene 308408 RatEntrez Gene 319197 MouseEntrez Gene 2828 Human P46093</a>
Synonyms:	G protein-coupled receptor 4
Note:	Seq homology of immunogen across species: Mouse (81%), Rat (81%), Pig (100%), Chimpanzee (100%), Bovine (94%)
Protein Families:	Druggable Genome, GPCR, Transmembrane



[View online »](#)

## Product images:



Sample (30 ug of whole cell lysate). A: Raji. 10% SDS PAGE. TA308713 diluted at 1:1000.