

Product datasheet for **TA308712**

GPR45 Rabbit Polyclonal Antibody

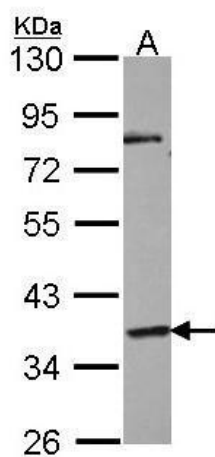
Product data:

Product Type:	Primary Antibodies
Applications:	WB
Recommended Dilution:	WB:1:500-1:3000
Reactivity:	Human
Host:	Rabbit
Isotype:	IgG
Clonality:	Polyclonal
Immunogen:	Synthetic peptide corresponding to a region within amino acids 192 and 284 of GPR45
Formulation:	1XPBS, 50% Glycerol (pH7). 0.01% Thimerosal was added as a preservative.
Concentration:	lot specific
Purification:	Purified by antigen-affinity chromatography.
Conjugation:	Unconjugated
Storage:	Store at -20°C as received.
Stability:	Stable for 12 months from date of receipt.
Predicted Protein Size:	42 kDa
Gene Name:	G protein-coupled receptor 45
Database Link:	NP_009158 Entrez Gene 11250 Human Q9Y5Y3
Background:	This intronless gene encodes a member of the G protein-coupled receptor (GPCR) family. Members of this protein family contain seven putative transmembrane domains and may mediate signaling processes to the interior of the cell via activation of heterotrimeric G proteins. This protein may function in the central nervous system. [provided by RefSeq]
Synonyms:	PSP24; PSP24(ALPHA); PSP24A
Protein Families:	Druggable Genome, GPCR, Transmembrane



[View online »](#)

Product images:



Sample (30 ug of whole cell lysate). A: NT2D1.
10% SDS PAGE. TA308712 diluted at 1:1000.