

Product datasheet for **TA308711**

GPR62 Rabbit Polyclonal Antibody

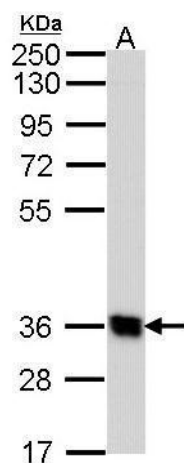
Product data:

Product Type:	Primary Antibodies
Applications:	IF, WB
Recommended Dilution:	ICC/IF:1:100-1:1000; WB:1:500-1:3000
Reactivity:	Human
Host:	Rabbit
Isotype:	IgG
Clonality:	Polyclonal
Immunogen:	Synthetic peptide corresponding to a region within amino acids 1 and 45 of GPR62 (Uniprot ID#Q9BZJ7)
Formulation:	0.1M Tris, 0.1M Glycine, 10% Glycerol (pH7). 0.01% Thimerosal was added as a preservative.
Concentration:	lot specific
Purification:	Purified by antigen-affinity chromatography.
Conjugation:	Unconjugated
Storage:	Store at -20°C as received.
Stability:	Stable for 12 months from date of receipt.
Predicted Protein Size:	38 kDa
Gene Name:	G protein-coupled receptor 62
Database Link:	NP_543141 Entrez Gene 118442 Human Q9BZJ7
Background:	G protein-coupled receptors (GPCRs, or GPRs) contain 7 transmembrane domains and transduce extracellular signals through heterotrimeric G proteins. [supplied by OMIM]
Synonyms:	GPCR8; KPG_005
Protein Families:	Druggable Genome, GPCR, Transmembrane

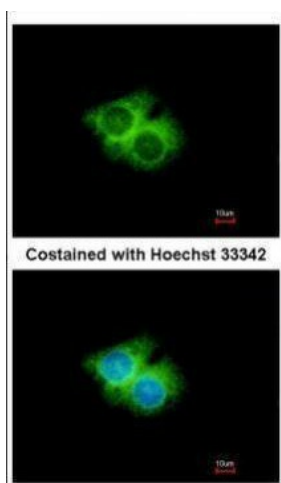


[View online »](#)

Product images:



Sample (30 ug of whole cell lysate). A: Hep G2.
10% SDS PAGE. TA308711 diluted at 1:1000.



Immunofluorescence analysis of methanol-fixed
Hep G2, using GPR62 (TA308711) antibody at
1:500 dilution.