

Product datasheet for **TA308710**

GPR136 (OPN5) Rabbit Polyclonal Antibody

Product data:

Product Type:	Primary Antibodies
Applications:	WB
Recommended Dilution:	WB:1:500-1:3000
Reactivity:	Human (Predicted: Mouse, Rat, Bovine)
Host:	Rabbit
Isotype:	IgG
Clonality:	Polyclonal
Immunogen:	Synthetic peptide corresponding to a region within amino acids 110 and 203 of Opsin 5 (Uniprot ID#Q6U736)
Formulation:	1XPBS, 20% Glycerol (pH7). 0.01% Thimerosal was added as a preservative.
Concentration:	lot specific
Purification:	Purified by antigen-affinity chromatography.
Conjugation:	Unconjugated
Storage:	Store at -20°C as received.
Stability:	Stable for 12 months from date of receipt.
Predicted Protein Size:	40 kDa
Gene Name:	opsin 5
Database Link:	NP_001025222 Entrez Gene 316259 RatEntrez Gene 353344 MouseEntrez Gene 221391 Human Q6U736
Background:	Opsins are members of the guanine nucleotide-binding protein (G protein)-coupled receptor superfamily. This opsin gene is expressed in the eye, brain, testes, and spinal cord. This gene belongs to the seven-exon subfamily of mammalian opsin genes that includes peropsin (RRH) and retinal G protein coupled receptor (RGR). Like these other seven-exon opsin genes, this gene may encode a protein with photoisomerase activity. Alternative splicing results in multiple transcript variants encoding different isoforms. [provided by RefSeq]
Synonyms:	NEUROPSIN; opsin 5; OTTHUMP00000016565; OTTHUMP00000039910; PGR12; TMEM13; transmembrane protein 13

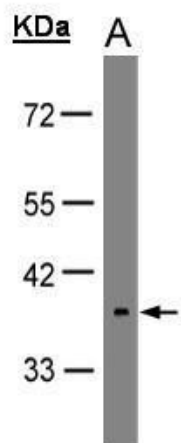


[View online »](#)

Note: Seq homology of immunogen across species: Mouse (100%), Rat (100%), Bovine (93%)

Protein Families: Druggable Genome, Transmembrane

Product images:



Sample (30 ug of whole cell lysate). A:HeLa S3.
10% SDS PAGE. TA308710 diluted at 1:1000