

Product datasheet for **TA308709**

TM7SF1 (GPR137B) Rabbit Polyclonal Antibody

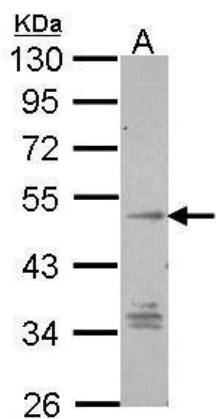
Product data:

Product Type:	Primary Antibodies
Applications:	IHC, WB
Recommended Dilution:	IHC:1:100-1:1000; WB:1:500-1:3000
Reactivity:	Human (Predicted: Mouse, Bovine)
Host:	Rabbit
Isotype:	IgG
Clonality:	Polyclonal
Immunogen:	Synthetic peptide corresponding to a region within amino acids 335 and 399 of TM7SF1/GPR137B (Uniprot ID#O60478)
Formulation:	0.1M Tris, 0.1M Glycine, 10% Glycerol (pH7). 0.01% Thimerosal was added as a preservative.
Concentration:	lot specific
Purification:	Purified by antigen-affinity chromatography.
Conjugation:	Unconjugated
Storage:	Store at -20°C as received.
Stability:	Stable for 12 months from date of receipt.
Predicted Protein Size:	46 kDa
Gene Name:	G protein-coupled receptor 137B
Database Link:	NP_003263 Entrez Gene 83924 Mouse Entrez Gene 7107 Human O60478
Synonyms:	TM7SF1
Note:	Seq homology of immunogen across species: Mouse (85%), Bovine (81%)
Protein Families:	Druggable Genome, Transmembrane

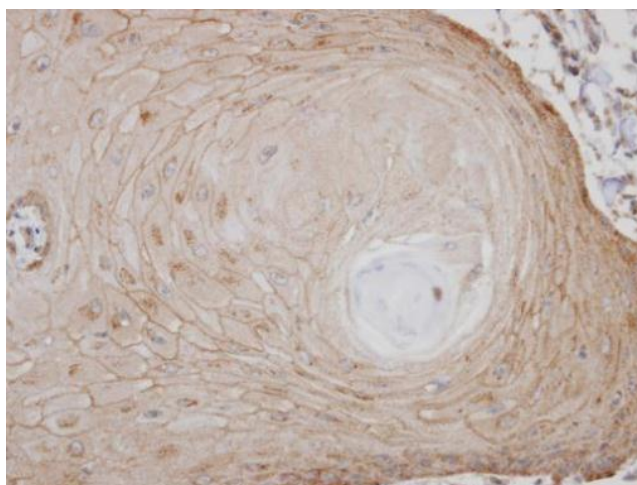


[View online »](#)

Product images:



Sample (30 ug of whole cell lysate). A: Hep G2. 10% SDS PAGE. TA308709 diluted at 1:1000.



Immunohistochemical analysis of paraffin-embedded BCC2 xenograft, using TM7SF1/GPR137B (TA308709) antibody at 1:100 dilution.