

Product datasheet for **TA308708**

C5L2 (C5AR2) Rabbit Polyclonal Antibody

Product data:

Product Type:	Primary Antibodies
Applications:	WB
Recommended Dilution:	WB:1:500-1:3000
Reactivity:	Human (Predicted: Bovine)
Host:	Rabbit
Isotype:	IgG
Clonality:	Polyclonal
Immunogen:	Synthetic peptide corresponding to a region within amino acids 248 and 337 of GPR77 (Uniprot ID#Q9P296)
Formulation:	0.1M Tris, 0.1M Glycine, 10% Glycerol (pH7). 0.01% Thimerosal was added as a preservative.
Concentration:	lot specific
Purification:	Purified by antigen-affinity chromatography.
Conjugation:	Unconjugated
Storage:	Store at -20°C as received.
Stability:	Stable for 12 months from date of receipt.
Predicted Protein Size:	36 kDa
Gene Name:	complement component 5a receptor 2
Database Link:	NP_060955 Entrez Gene 27202 Human Q9P296
Background:	The anaphylatoxins C3a (see MIM 120700), C4a (see MIM 120810), and C5a are cationic fragments generated during the complement cascade that participate in host defense. In the case of inappropriate complement activation, anaphylatoxins may be involved in autoimmunity and sepsis. C5L2 is coexpressed with the C5a receptor, C5AR (C5R1; MIM 113995), on polymorphonuclear neutrophils and may modulate C5AR activity (Gerard et al., 2005 [PubMed 16204243]). [supplied by OMIM]
Synonyms:	C5L2; GPF77; GPR77

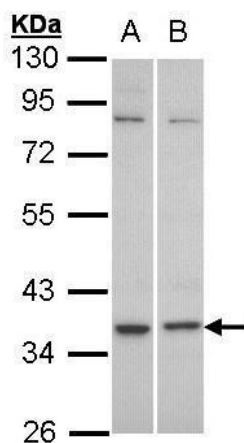


[View online »](#)

Note: Seq homology of immunogen across species: Bovine (86%)

Protein Families: Druggable Genome, GPCR, Transmembrane

Product images:



Sample (30 ug of whole cell lysate). A: HeLa. B: Molt-4. 10% SDS PAGE. TA308708 diluted at 1:1000