

## Product datasheet for **TA308705**

### APJ Receptor (APLNR) Rabbit Polyclonal Antibody

#### Product data:

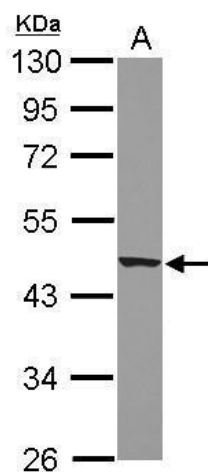
Product Type:	Primary Antibodies
Applications:	IF, IHC, WB
Recommended Dilution:	ICC/IF:1:100-1:1000; IHC:1:100-1:1000; WB:1:500-1:3000
Reactivity:	Human (Predicted: Rat, Rhesus Monkey, Mouse)
Host:	Rabbit
Isotype:	IgG
Clonality:	Polyclonal
Immunogen:	Synthetic peptide corresponding to a region within amino acids 2 and 96 of Apelin Receptor (Uniprot ID#P35414)
Formulation:	1XPBS, 20% Glycerol (pH7). 0.01% Thimerosal was added as a preservative.
Purification:	Purified by antigen-affinity chromatography.
Conjugation:	Unconjugated
Storage:	Store at -20°C as received.
Stability:	Stable for 12 months from date of receipt.
Predicted Protein Size:	43 kDa
Gene Name:	apelin receptor
Database Link:	<a href="#">NP_005152</a> <a href="#">Entrez Gene 23796 Mouse</a> <a href="#">Entrez Gene 83518 Rat</a> <a href="#">Entrez Gene 187 Human</a> <a href="#">P35414</a>
Background:	There are at least two distinct receptor subtypes of angiotensin II: angiotensin II receptor, type 1 (AGTR1) and angiotensin II receptor, type 2 (AGTR2). Most of the effects of angiotensin II are mediated by the AGTR1 receptor. This gene is related to the AGTR1 gene by sequence similarity. It was cloned based on a conserved transmembrane domain found in members of the G protein-coupled receptor (GPCR) gene family. [provided by RefSeq]
Synonyms:	AGTRL1; APJ; APJR; HG11
Note:	Seq homology of immunogen across species: Mouse (93%), Rat (93%), Rhesus Monkey (100%)
Protein Families:	Druggable Genome, GPCR, Transmembrane



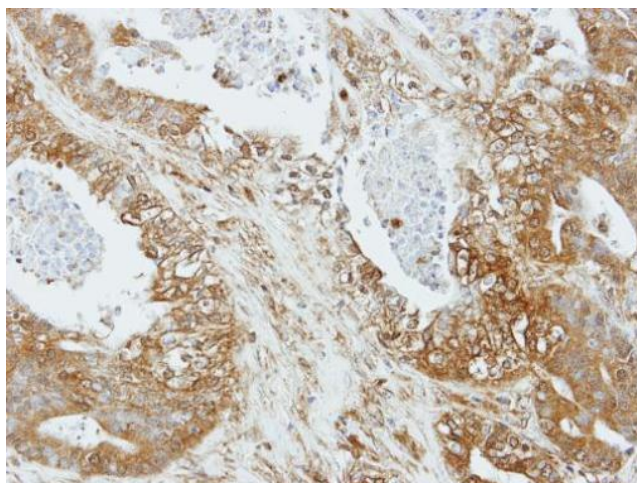
[View online »](#)

Protein Pathways: Neuroactive ligand-receptor interaction

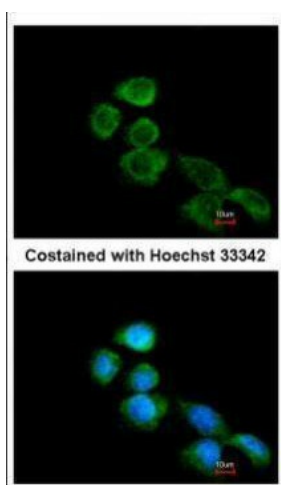
### Product images:



Sample (30 ug of whole cell lysate). A: U87-MG.  
10% SDS PAGE. TA308705 diluted at 1:1000.



Immunohistochemical analysis of paraffin-  
embedded OVCA xenograft, using Apelin  
Receptor (TA308705) antibody at 1:100 dilution.



Immunofluorescence analysis of methanol-fixed A431, using Apelin Receptor (TA308705) antibody at 1:500 dilution.