

Product datasheet for **TA308703**

HRH4 Rabbit Polyclonal Antibody

Product data:

Product Type:	Primary Antibodies
Applications:	WB
Recommended Dilution:	WB:1:500-1:3000
Reactivity:	Human (Predicted: Mouse, Pig)
Host:	Rabbit
Isotype:	IgG
Clonality:	Polyclonal
Immunogen:	Synthetic peptide corresponding to a region within amino acids 1 and 82 of Histamine H4 Receptor (Uniprot ID#Q9H3N8)
Formulation:	1XPBS, 50% Glycerol (pH7). 0.01% Thimerosal was added as a preservative.
Concentration:	lot specific
Purification:	Purified by antigen-affinity chromatography.
Conjugation:	Unconjugated
Storage:	Store at -20°C as received.
Stability:	Stable for 12 months from date of receipt.
Predicted Protein Size:	45 kDa
Gene Name:	histamine receptor H4
Database Link:	NP_001137300 Entrez Gene 225192 Mouse Entrez Gene 59340 Human Q9H3N8
Background:	Histamine is a ubiquitous messenger molecule released from mast cells, enterochromaffin-like cells, and neurons. Its various actions are mediated by histamine receptors H1, H2, H3 and H4. Histamine receptor H4 belongs to the family 1 of G protein-coupled receptors and has the highest homology to histamine receptor H3 among known G protein-coupled receptors. [provided by RefSeq]
Synonyms:	AXOR35; BG26; GPCR105; GPRv53; H4; H4R; HH4R
Note:	Seq homology of immunogen across species: Mouse (83%), Pig (92%)

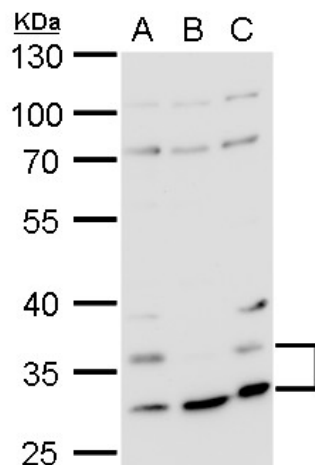


[View online »](#)

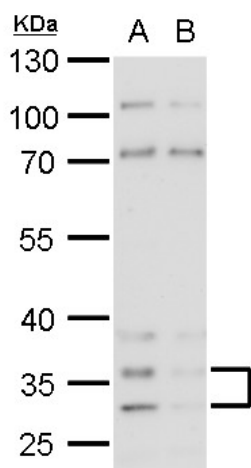
Protein Families: Druggable Genome, GPCR, Transmembrane

Protein Pathways: Neuroactive ligand-receptor interaction

Product images:



Histamine H4 Receptor antibody detects Histamine H4 Receptor protein by western blot analysis. A. 30 ug Jurkat whole cell lysate/extract. B. 30 ug Raji whole cell lysate/extract. C. 30 ug NCI-H929 whole cell lysate/extract. 10 % SDS-PAGE. Histamine H4 Rec



Histamine H4 Receptor antibody detects Histamine H4 Receptor protein by western blot analysis. A. 30 ug HeLa whole cell lysate/extract. B. 30 ug whole cell lysate/extract of HRH4 shRNA-transfected HeLa cells. 10 % SDS-PAGE. Histamine H4 Receptor antibody