

Product datasheet for **TA308701**

Annexin A1 (ANXA1) Rabbit Polyclonal Antibody

Product data:

Product Type:	Primary Antibodies
Applications:	IF, IHC, WB
Recommended Dilution:	ICC/IF:1:100-1:1000; IHC:1:100-1:1000; WB:1:1000-1:10000
Reactivity:	Human (Predicted: Feline, Pig, Rabbit, Rat, Bovine)
Host:	Rabbit
Isotype:	IgG
Clonality:	Polyclonal
Immunogen:	Recombinant fragment corresponding to a region within amino acids 1 and 228 of Annexin A1 (Uniprot ID#P04083)
Formulation:	0.1M Tris, 0.1M Glycine, 10% Glycerol (pH7). 0.01% Thimerosal was added as a preservative.
Concentration:	lot specific
Purification:	Purified by antigen-affinity chromatography.
Conjugation:	Unconjugated
Storage:	Store at -20°C as received.
Stability:	Stable for 12 months from date of receipt.
Predicted Protein Size:	39 kDa
Gene Name:	annexin A1
Database Link:	NP_000691 Entrez Gene 25380 Rat Entrez Gene 301 Human P04083
Background:	Annexin I belongs to a family of Ca(2+)-dependent phospholipid binding proteins which have a molecular weight of approximately 35,000 to 40,000 and are preferentially located on the cytosolic face of the plasma membrane. Annexin I protein has an apparent relative molecular mass of 40 kDa, with phospholipase A2 inhibitory activity. Since phospholipase A2 is required for the biosynthesis of the potent mediators of inflammation, prostaglandins and leukotrienes, annexin I may have potential anti-inflammatory activity. [provided by RefSeq]
Synonyms:	ANX1; LPC1

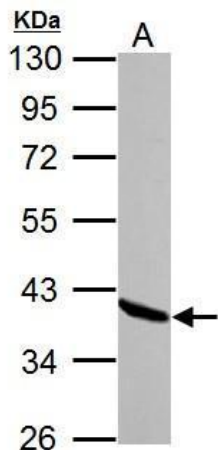


[View online »](#)

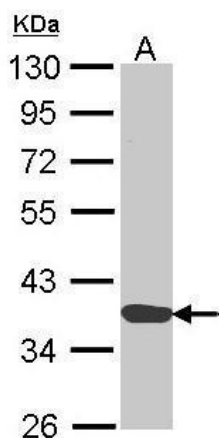
Note: Seq homology of immunogen across species: Cat (93%), Pig (87%), Rabbit (92%), Rat (89%), Bovine (89%)

Protein Families: Druggable Genome

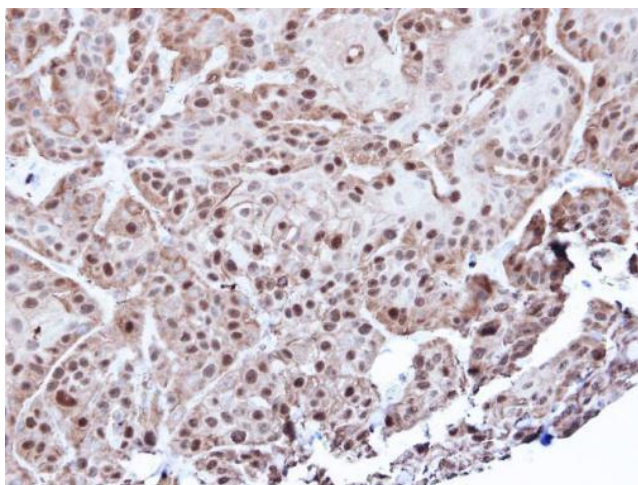
Product images:



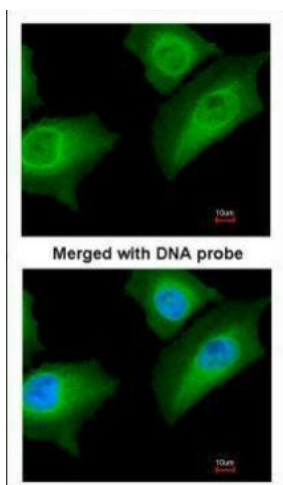
Sample (30 ug of whole cell lysate). A: NIH-3T3.
10% SDS PAGE. TA308701 diluted at 1:10000.



Sample (30 ug of whole cell lysate). A: H1299.
10% SDS PAGE. TA308701 diluted at 1:1000.



Immunohistochemical analysis of paraffin-embedded Cal27 xenograft, using Annexin A1 (TA308701) antibody at 1:500 dilution.



Immunofluorescence analysis of paraformaldehyde-fixed HeLa, using Annexin A1 (TA308701) antibody at 1:200 dilution.