

## Product datasheet for **TA308700**

### XPR1 Rabbit Polyclonal Antibody

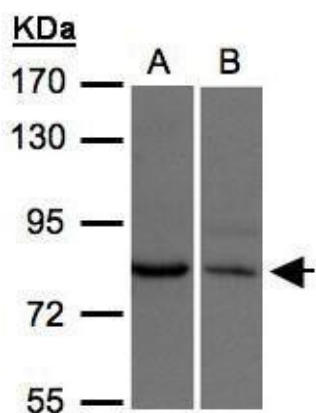
#### Product data:

Product Type:	Primary Antibodies
Applications:	IHC, WB
Recommended Dilution:	IHC:1:100-1:1000; WB:1:500-1:3000
Reactivity:	Human (Predicted: Mouse, Rat, Xenopus, Dog, Bovine, X. tropicalis)
Host:	Rabbit
Isotype:	IgG
Clonality:	Polyclonal
Immunogen:	Synthetic peptide corresponding to a region within amino acids 1 and 45 of XPR1 (Uniprot ID#Q9UBH6)
Formulation:	0.1M Tris, 0.1M Glycine, 10% Glycerol (pH7). 0.01% Thimerosal was added as a preservative.
Concentration:	lot specific
Purification:	Purified by antigen-affinity chromatography.
Conjugation:	Unconjugated
Storage:	Store at -20°C as received.
Stability:	Stable for 12 months from date of receipt.
Predicted Protein Size:	82 kDa
Gene Name:	xenotropic and polytropic retrovirus receptor 1
Database Link:	<a href="#">NP_001129141</a> <a href="#">Entrez Gene 19775 MouseEntrez Gene 289424 RatEntrez Gene 490301 DogEntrez Gene 9213 Human Q9UBH6</a>
Synonyms:	SYG1; X3
Note:	Seq homology of immunogen across species: Mouse (100%), Rat (100%), Xenopus laevis (93%), Xenopus Tropicalis (100%), Dog (100%), Bovine (100%)
Protein Families:	Druggable Genome, Transmembrane

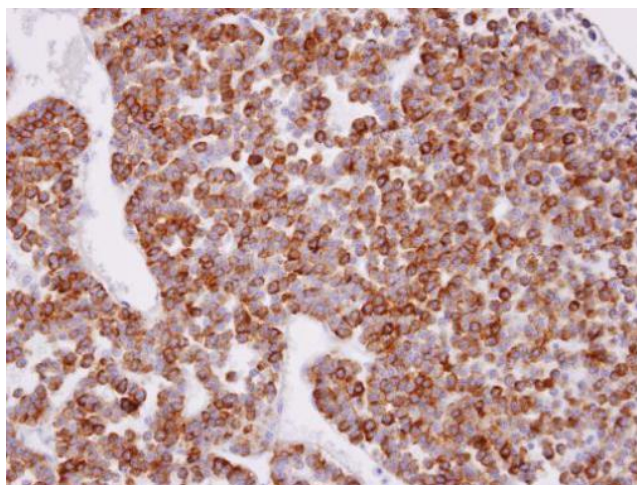


[View online »](#)

## Product images:



Sample (30 ug of whole cell lysate). A:H1299.  
B:Hep G2. 7.5% SDS PAGE. TA308700 diluted at  
1:500



Immunohistochemical analysis of paraffin-  
embedded PITUITARY GLAND TUMOR, using  
XPR1 (TA308700) antibody at 1:100 dilution.