

## Product datasheet for **TA308698**

### PAX8 Rabbit Polyclonal Antibody

#### Product data:

Product Type:	Primary Antibodies
Applications:	IF, IHC, IP, WB
Recommended Dilution:	ICC/IF:1:100-1:1000; IHC:1:100-1:1000; WB:1:500-1:3000
Reactivity:	Human
Host:	Rabbit
Isotype:	IgG
Clonality:	Polyclonal
Immunogen:	Recombinant protein fragment contain a sequence corresponding to a region within amino acids 1 and 204 of PAX8
Formulation:	1XPBS, 20% Glycerol (pH7). 0.025% ProClin 300 was added as a preservative.
Concentration:	lot specific
Purification:	Purified by antigen-affinity chromatography.
Conjugation:	Unconjugated
Storage:	Store at -20°C as received.
Stability:	Stable for 12 months from date of receipt.
Predicted Protein Size:	43 kDa
Gene Name:	paired box 8
Database Link:	<a href="#">NP_054698</a> <a href="#">Entrez Gene 7849 Human</a> <a href="#">Q06710</a>
Background:	This gene encodes a member of the paired box (PAX) family of transcription factors. Members of this gene family typically encode proteins that contain a paired box domain, an octapeptide, and a paired-type homeodomain. This nuclear protein is involved in thyroid follicular cell development and expression of thyroid-specific genes. Mutations in this gene have been associated with thyroid dysgenesis, thyroid follicular carcinomas and atypical follicular thyroid adenomas. Alternately spliced transcript variants encoding different isoforms have been described. [provided by RefSeq]
Synonyms:	OTTHUMP00000158659; OTTHUMP00000158660; paired box 8; paired domain gene 8

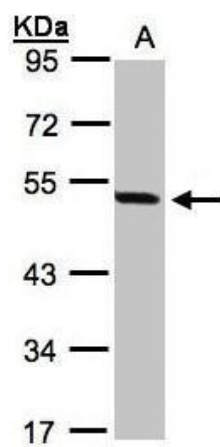


[View online »](#)

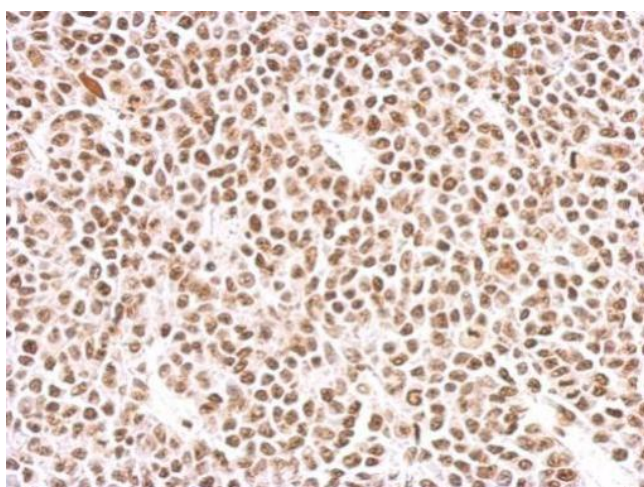
Protein Families: Druggable Genome, Transcription Factors

Protein Pathways: Pathways in cancer, Thyroid cancer

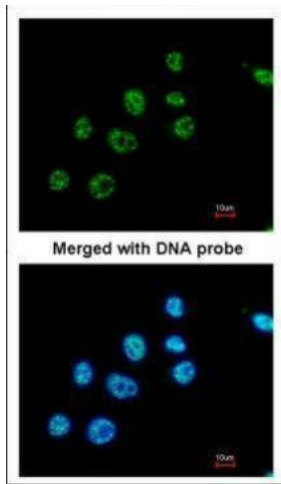
### Product images:



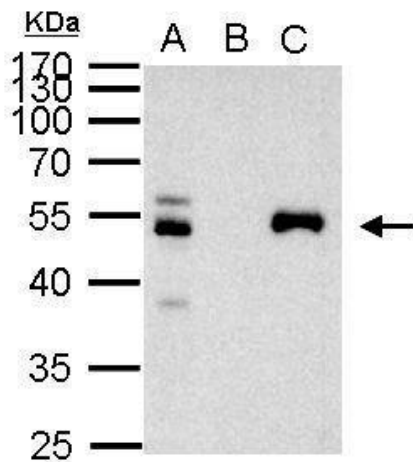
Sample (30 ug whole cell lysate). A:293T. 10% SDS PAGE. TA308698 diluted at 1:1000



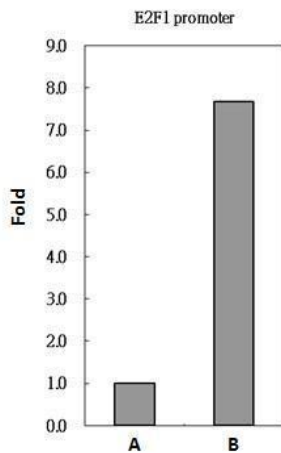
PAX8 antibody detects PAX8 protein at nucleus on BT483 xenograft by immunohistochemical analysis. Sample: Paraffin-embedded BT483 xenograft. PAX8 antibody (TA308698) dilution: 1:500.



Immunofluorescence analysis of paraformaldehyde-fixed A549, using PAX8 (TA308698) antibody at 1:200 dilution.



PAX8 antibody immunoprecipitates PAX8 protein in IP experiments. IP Sample: 1000 ug 293T whole cell lysate/extract A. 40 ug 293T whole cell lysate/extract B. Control with 2 ug of preimmune rabbit IgG C. Immunoprecipitation of PAX8 protein by 2 ug of PAX8



PAX8 antibody immunoprecipitates PAX8 protein-DNA in ChIP experiments. ChIP Sample: 293T whole cell lysate/extract A. 5 ug preimmune rabbit IgG B. 5 ug of PAX8 antibody (TA308698) The precipitated DNA was detected by PCR with primer set targeting to E2F1