

Product datasheet for **TA308697**

PIM2 Rabbit Polyclonal Antibody

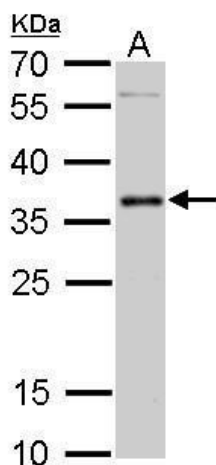
Product data:

Product Type:	Primary Antibodies
Applications:	IHC, WB
Recommended Dilution:	IHC:1:100-1:1000; WB:1:500-1:3000
Reactivity:	Human
Host:	Rabbit
Isotype:	IgG
Clonality:	Polyclonal
Immunogen:	Recombinant fragment corresponding to a region within amino acids 53 and 278 of PIM2 (Uniprot ID#Q9P1W9)
Formulation:	0.1M Tris, 0.1M Glycine, 20% Glycerol (pH7). 0.01% Thimerosal was added as a preservative.
Concentration:	lot specific
Purification:	Purified by antigen-affinity chromatography.
Conjugation:	Unconjugated
Storage:	Store at -20°C as received.
Stability:	Stable for 12 months from date of receipt.
Predicted Protein Size:	34 kDa
Gene Name:	Pim-2 proto-oncogene, serine/threonine kinase
Database Link:	NP_006866 Entrez Gene 11040 Human Q9P1W9
Background:	PIM2 belongs to a family of protooncogenes that encode serine/threonine protein kinases (Mikkers et al., 2004 [PubMed 15199164]). [supplied by OMIM]
Synonyms:	Pim-2h
Protein Families:	Druggable Genome, Protein Kinase
Protein Pathways:	Acute myeloid leukemia

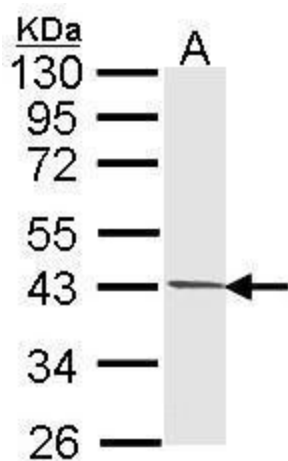


[View online »](#)

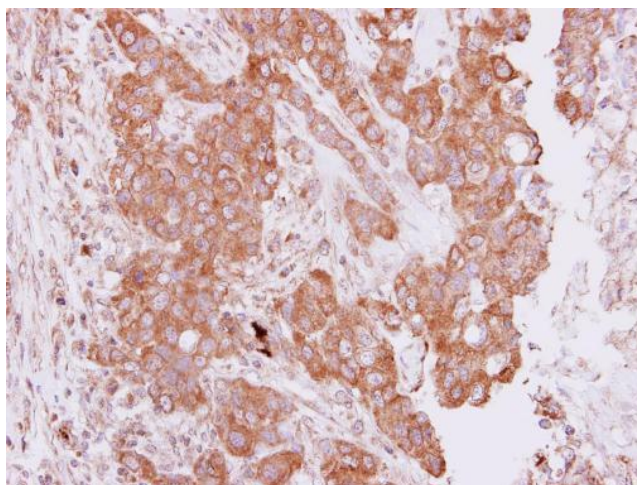
Product images:



PIM2 antibody detects PIM2 protein by Western blot analysis. A. 50 ug mouse testis lysate/extract. 12 % SDS-PAGE. PIM2 antibody (TA308697) dilution: 1:500



Sample (30 ug of whole cell lysate). A: 293T. 10% SDS PAGE. TA308697 diluted at 1:1000.



Immunohistochemical analysis of paraffin-embedded Breast ca, using PIM2 (TA308697) antibody at 1:250 dilution.