

## Product datasheet for **TA308696**

### **TBLR1 (TBL1XR1) Rabbit Polyclonal Antibody**

#### **Product data:**

<b>Product Type:</b>	Primary Antibodies
<b>Applications:</b>	IF, IHC, WB
<b>Recommended Dilution:</b>	ICC/IF:1:100-1:1000; IHC:1:100-1:1000; WB:1:500-1:3000
<b>Reactivity:</b>	Human (Predicted: Mouse, Rat, Bovine)
<b>Host:</b>	Rabbit
<b>Isotype:</b>	IgG
<b>Clonality:</b>	Polyclonal
<b>Immunogen:</b>	Recombinant fragment corresponding to a region within amino acids 210 and 514 of TBLR1 (Uniprot ID#Q9BZK7)
<b>Formulation:</b>	0.1M Tris, 0.1M Glycine, 10% Glycerol (pH7). 0.01% Thimerosal was added as a preservative.
<b>Concentration:</b>	lot specific
<b>Purification:</b>	Purified by antigen-affinity chromatography.
<b>Conjugation:</b>	Unconjugated
<b>Storage:</b>	Store at -20°C as received.
<b>Stability:</b>	Stable for 12 months from date of receipt.
<b>Predicted Protein Size:</b>	56 kDa
<b>Gene Name:</b>	transducin (beta)-like 1 X-linked receptor 1
<b>Database Link:</b>	<a href="#">NP_078941</a> <a href="#">Entrez Gene 81004 MouseEntrez Gene 365755 RatEntrez Gene 79718 Human Q9BZK7</a>
<b>Background:</b>	The protein encoded by this gene has sequence similarity with members of the WD40 repeat-containing protein family. The WD40 group is a large family of proteins, which appear to have a regulatory function. It is believed that the WD40 repeats mediate protein-protein interactions and members of the family are involved in signal transduction, RNA processing, gene regulation, vesicular trafficking, cytoskeletal assembly and may play a role in the control of cytotypic differentiation. [provided by RefSeq]
<b>Synonyms:</b>	C21; DC42; IRA1; MRD41; TBLR1

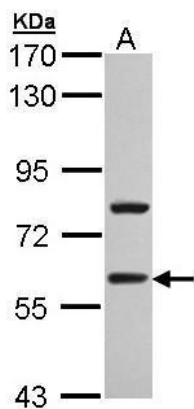


[View online »](#)

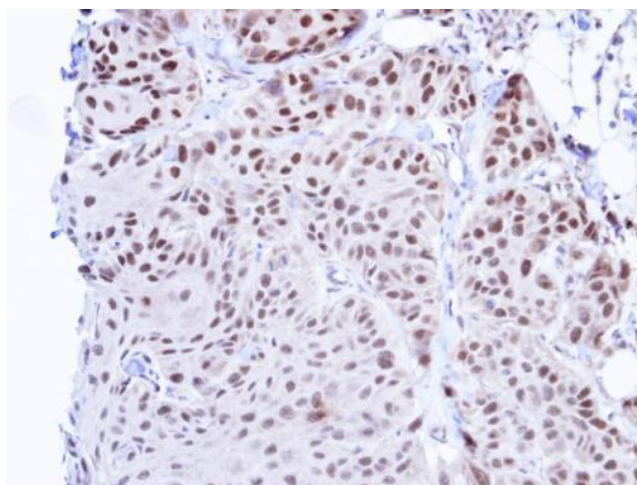
**Note:** Seq homology of immunogen across species: Mouse (100%), Rat (100%), Bovine (100%)

**Protein Families:** Druggable Genome, Transcription Factors

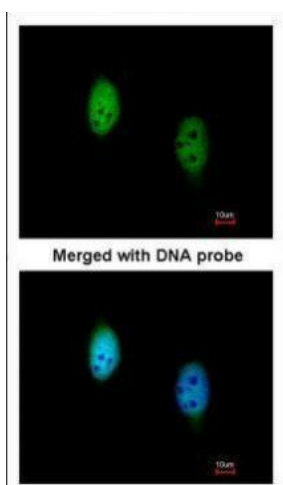
**Protein Pathways:** Wnt signaling pathway

**Product images:**

Sample (30 ug of whole cell lysate). A: A431. 7.5% SDS PAGE. TA308696 diluted at 1:1000.



Immunohistochemical analysis of paraffin-embedded Cal27 Xenograft, using TBLR1 (TA308696) antibody at 1:100 dilution.



Immunofluorescence analysis of paraformaldehyde-fixed HeLa, using TBLR1 (TA308696) antibody at 1:200 dilution.