

## Product datasheet for **TA308695**

### **MST1 (STK4) Rabbit Polyclonal Antibody**

#### **Product data:**

<b>Product Type:</b>	Primary Antibodies
<b>Applications:</b>	IF, IHC, IP, WB
<b>Recommended Dilution:</b>	ICC/IF:1:100-1:1000; IHC:1:100-1:1000; WB:1:500-1:3000
<b>Reactivity:</b>	Human, Mouse (Predicted: Rat, Chicken, Bovine, Rhesus Monkey)
<b>Host:</b>	Rabbit
<b>Isotype:</b>	IgG
<b>Clonality:</b>	Polyclonal
<b>Immunogen:</b>	Synthetic peptide corresponding to a region within amino acids 324 and 418 of STK4 (Uniprot ID#Q13043)
<b>Formulation:</b>	0.1M Tris, 0.1M Glycine, 10% Glycerol (pH7). 0.01% Thimerosal was added as a preservative.
<b>Concentration:</b>	lot specific
<b>Purification:</b>	Purified by antigen-affinity chromatography.
<b>Conjugation:</b>	Unconjugated
<b>Storage:</b>	Store at -20°C as received.
<b>Stability:</b>	Stable for 12 months from date of receipt.
<b>Predicted Protein Size:</b>	56 kDa
<b>Gene Name:</b>	serine/threonine kinase 4
<b>Database Link:</b>	<a href="#">NP_006273</a> <a href="#">Entrez Gene 58231 Mouse</a> <a href="#">Entrez Gene 311622 Rat</a> <a href="#">Entrez Gene 6789 Human</a> <a href="#">Q13043</a>
<b>Background:</b>	The protein encoded by this gene is a cytoplasmic kinase that is structurally similar to the yeast Ste20p kinase, which acts upstream of the stress-induced mitogen-activated protein kinase cascade. The encoded protein can phosphorylate myelin basic protein and undergoes autophosphorylation. A caspase-cleaved fragment of the encoded protein has been shown to be capable of phosphorylating histone H2B. The particular phosphorylation catalyzed by this protein has been correlated with apoptosis, and it's possible that this protein induces the chromatin condensation observed in this process. [provided by RefSeq]
<b>Synonyms:</b>	KRS2; MST1; TIIAC; YSK3



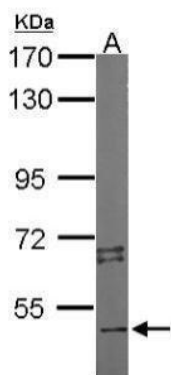
[View online »](#)

**Note:** Seq homology of immunogen across species: Rat (100%), Chicken (100%), Rhesus Monkey (100%), Bovine (100%)

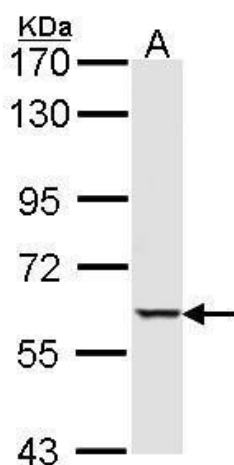
**Protein Families:** Druggable Genome, Protein Kinase

**Protein Pathways:** MAPK signaling pathway, Non-small cell lung cancer, Pathways in cancer

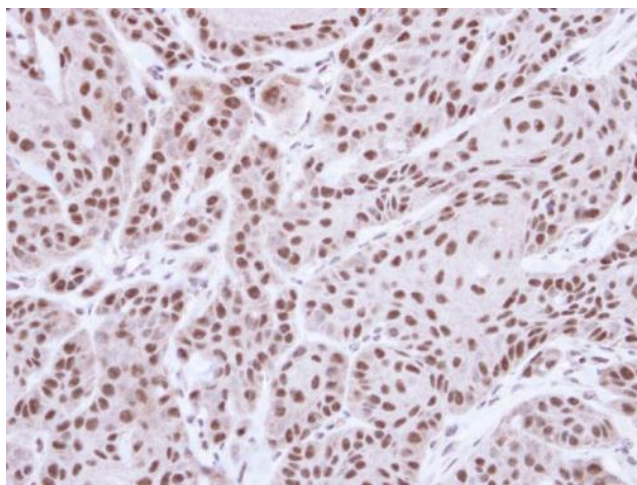
**Product images:**



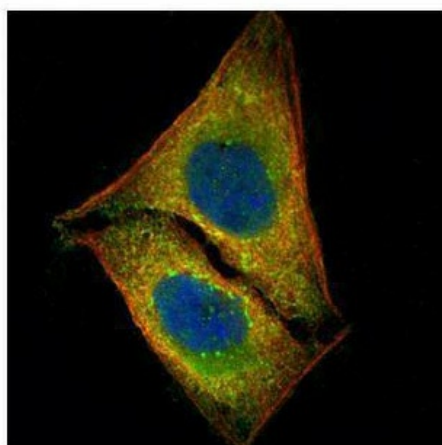
Sample (50 ug of whole cell lysate). A: Mouse brain. 7.5% SDS PAGE. TA308695 diluted at 1:2000.



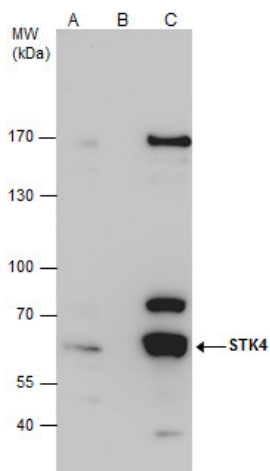
Sample (30 ug of whole cell lysate). A: Hep G2. 7.5% SDS PAGE. STK4 antibody. TA308695 diluted at 1:1000.



Immunohistochemical analysis of paraffin-embedded Cal27 xenograft, using MST1 (TA308695) antibody at 1:500 dilution.



Confocal immunofluorescence analysis (Olympus FV10i) of paraformaldehyde-fixed U2OS, using STK4 (TA308695) antibody (Green) at 1:500 dilution. Alpha-tubulin filaments were labeled with anti-alpha tubulin antibody (Red) at 1:2000.



STK4 antibody immunoprecipitates STK4 protein in IP experiments. IP samples: HepG2 whole cell extract. A. 50 ug HepG2 whole cell extract. B. Control with 4 ug of preimmune Rabbit IgG. C. Immunoprecipitation of STK4 protein by 4 ug STK4 antibody (TA308695)