

## Product datasheet for **TA308694**

### ACT (FHL5) Rabbit Polyclonal Antibody

#### Product data:

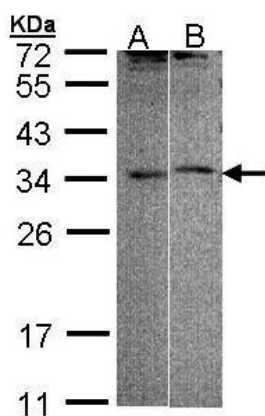
Product Type:	Primary Antibodies
Applications:	IF, IHC, WB
Recommended Dilution:	ICC/IF:1:100-1:1000; IHC:1:100-1:1000; WB:1:500-1:3000
Reactivity:	Human (Predicted: Mouse, Rat, Bovine)
Host:	Rabbit
Isotype:	IgG
Clonality:	Polyclonal
Immunogen:	Recombinant fragment corresponding to a region within amino acids 1 and 226 of FHL5 (Uniprot ID#Q5TD97)
Formulation:	0.1M Tris, 0.1M Glycine, 10% Glycerol (pH7). 0.01% Thimerosal was added as a preservative.
Concentration:	lot specific
Purification:	Purified by antigen-affinity chromatography.
Conjugation:	Unconjugated
Storage:	Store at -20°C as received.
Stability:	Stable for 12 months from date of receipt.
Predicted Protein Size:	33 kDa
Gene Name:	four and a half LIM domains 5
Database Link:	<a href="#">NP_065228</a> <a href="#">Entrez Gene 57756 MouseEntrez Gene 297954 RatEntrez Gene 9457 Human Q5TD97</a>
Background:	The protein encoded by this gene is coordinately expressed with activator of cAMP-responsive element modulator (CREM). It is associated with CREM and confers a powerful transcriptional activation function. CREM acts as a transcription factor essential for the differentiation of spermatids into mature spermatozoa. There are multiple polyadenylation sites found in this gene. [provided by RefSeq]
Synonyms:	ACT; dJ393D12.2
Note:	Seq homology of immunogen across species: Mouse (89%), Rat (90%), Bovine (91%)



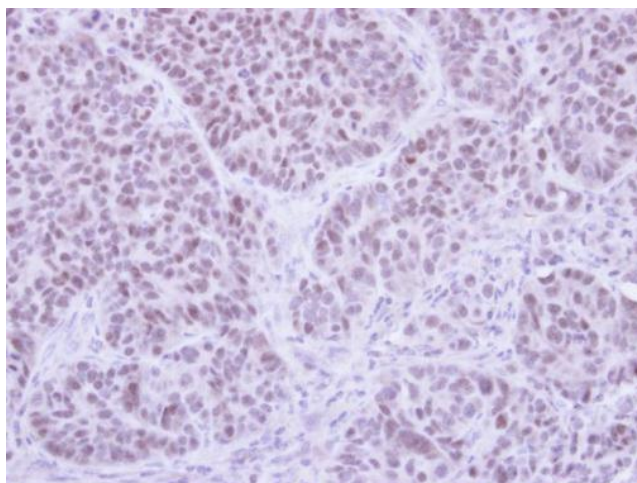
[View online »](#)

Protein Families: Druggable Genome

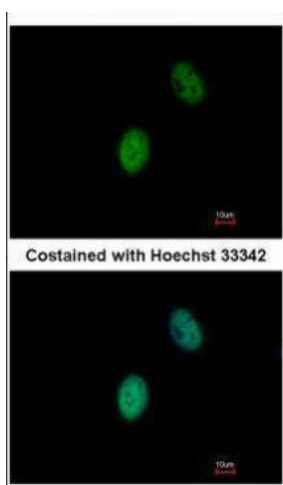
### Product images:



Sample (30 ug of whole cell lysate). A: 293T. B: Raji. 12 % SDS PAGE. TA308694 diluted at 1:1000



Immunohistochemical analysis of paraffin-embedded SW480 xenograft, using FHL5 (TA308694) antibody at 1:500 dilution.



Immunofluorescence analysis of paraformaldehyde-fixed HeLa, using FHL5 (TA308694) antibody at 1:500 dilution.