

Product datasheet for **TA308693**

RGS13 Rabbit Polyclonal Antibody

Product data:

Product Type:	Primary Antibodies
Applications:	IF, WB
Recommended Dilution:	ICC/IF:1:100-1:1000; WB:1:500-1:3000
Reactivity:	Human (Predicted: Mouse, Cow)
Host:	Rabbit
Isotype:	IgG
Clonality:	Polyclonal
Immunogen:	Recombinant fragment corresponding to a region within amino acids 1 and 159 of RGS13 (Uniprot ID#O14921)
Formulation:	0.1M Tris, 0.1M Glycine, 10% Glycerol (pH7). 0.01% Thimerosal was added as a preservative.
Concentration:	lot specific
Purification:	Purified by antigen-affinity chromatography.
Conjugation:	Unconjugated
Storage:	Store at -20°C as received.
Stability:	Stable for 12 months from date of receipt.
Predicted Protein Size:	19 kDa
Gene Name:	regulator of G-protein signaling 13
Database Link:	NP_002918 Entrez Gene 246709 Mouse Entrez Gene 6003 Human O14921
Background:	The protein encoded by this gene is a member of the regulator of G protein signaling (RGS) family. RGS family members share similarity with <i>S. cerevisiae</i> SST2 and <i>C. elegans</i> egl-10 proteins, which contain a characteristic conserved RGS domain. RGS proteins accelerate GTPase activity of G protein alpha-subunits, thereby driving G protein into their inactive GDP-bound form, thus negatively regulating G protein signaling. RGS proteins have been implicated in the fine tuning of a variety of cellular events in response to G protein-coupled receptor activation. The biological function of this gene, however, is unknown. Two transcript variants encoding the same isoform exist. [provided by RefSeq]



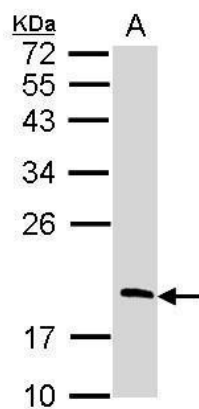
[View online »](#)

Synonyms: MGC17173

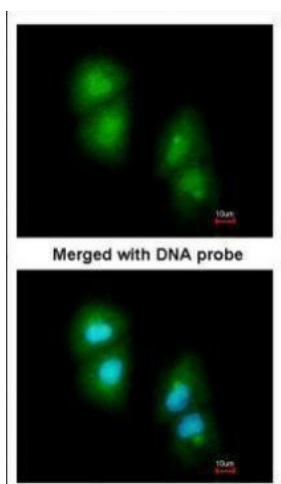
Note: Seq homology of immunogen across species: mouse (84%), cow (89%)

Protein Families: Druggable Genome

Product images:



Sample (30 ug of whole cell lysate). A: Raji. 12% SDS PAGE. TA308693 diluted at 1:1000.



Immunofluorescence analysis of paraformaldehyde-fixed A549, using RGS13 (TA308693) antibody at 1:200 dilution.